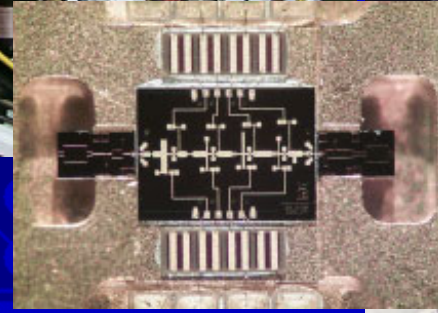
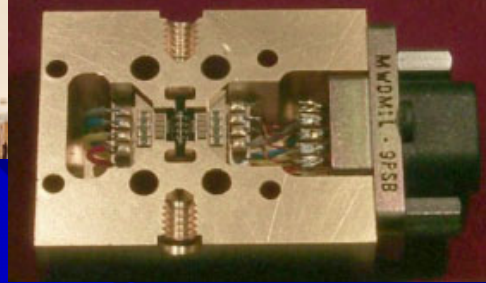
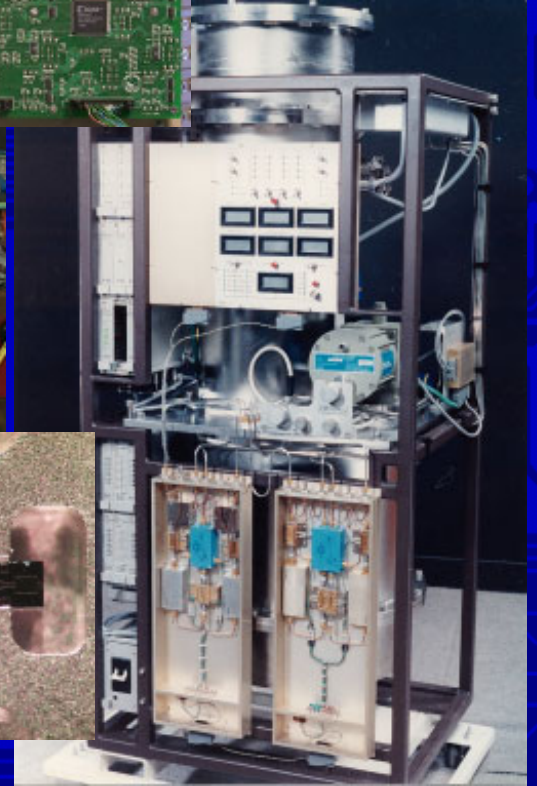
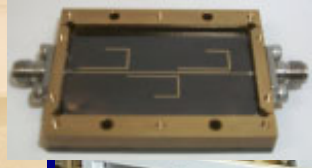




ATNF Receiver Group





CSIRO

Parkes 64m



The Compact Array

- Located at Narrabri, New South Wales.
- 6 antennas
- 22m diameter
- 5 moveable antennas on a 3 km rail track with 300 m northern spur
- Useable to 115 GHz
- better than 0.2 mm surface accuracy





ATNF Compact Array at Narrabri





Mopra 22m Antenna





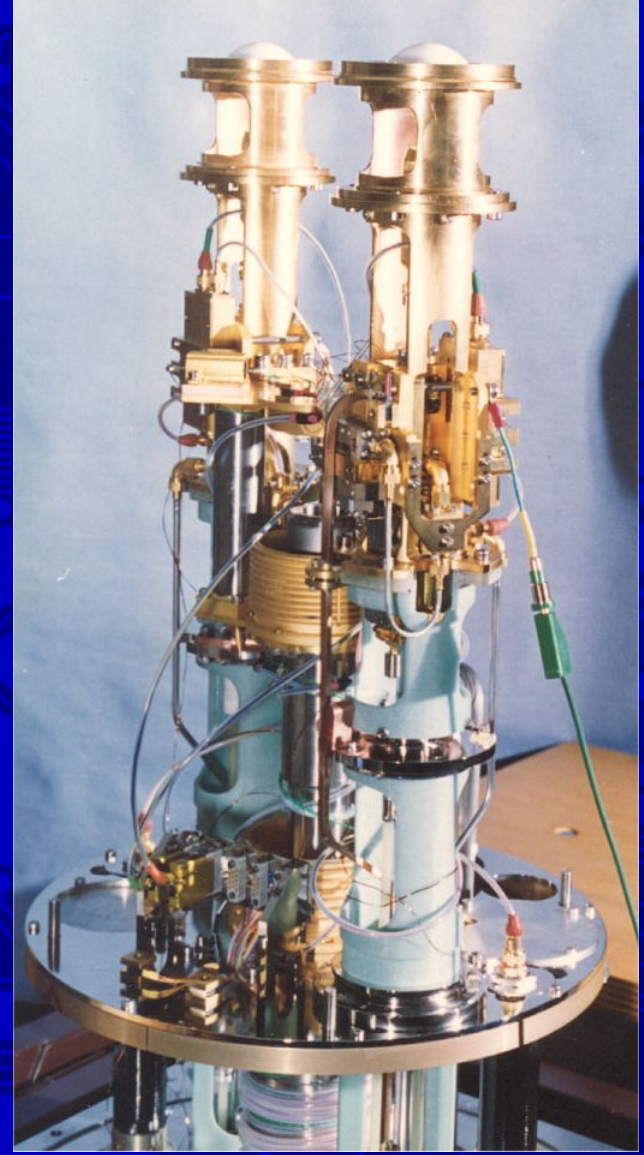
22m Antenna from Mopra Rock



Mopra 3mm SIS receiver



- Two orthogonal linear
- 84 to 116 GHz
- Gaussian optics signal path, cross grid polariser
- Receiver temps SSB
 - 60K at 90 GHz
 - 120K at 115 GHz
- Eleventh year of operation





Parke's Mars X Band Project.



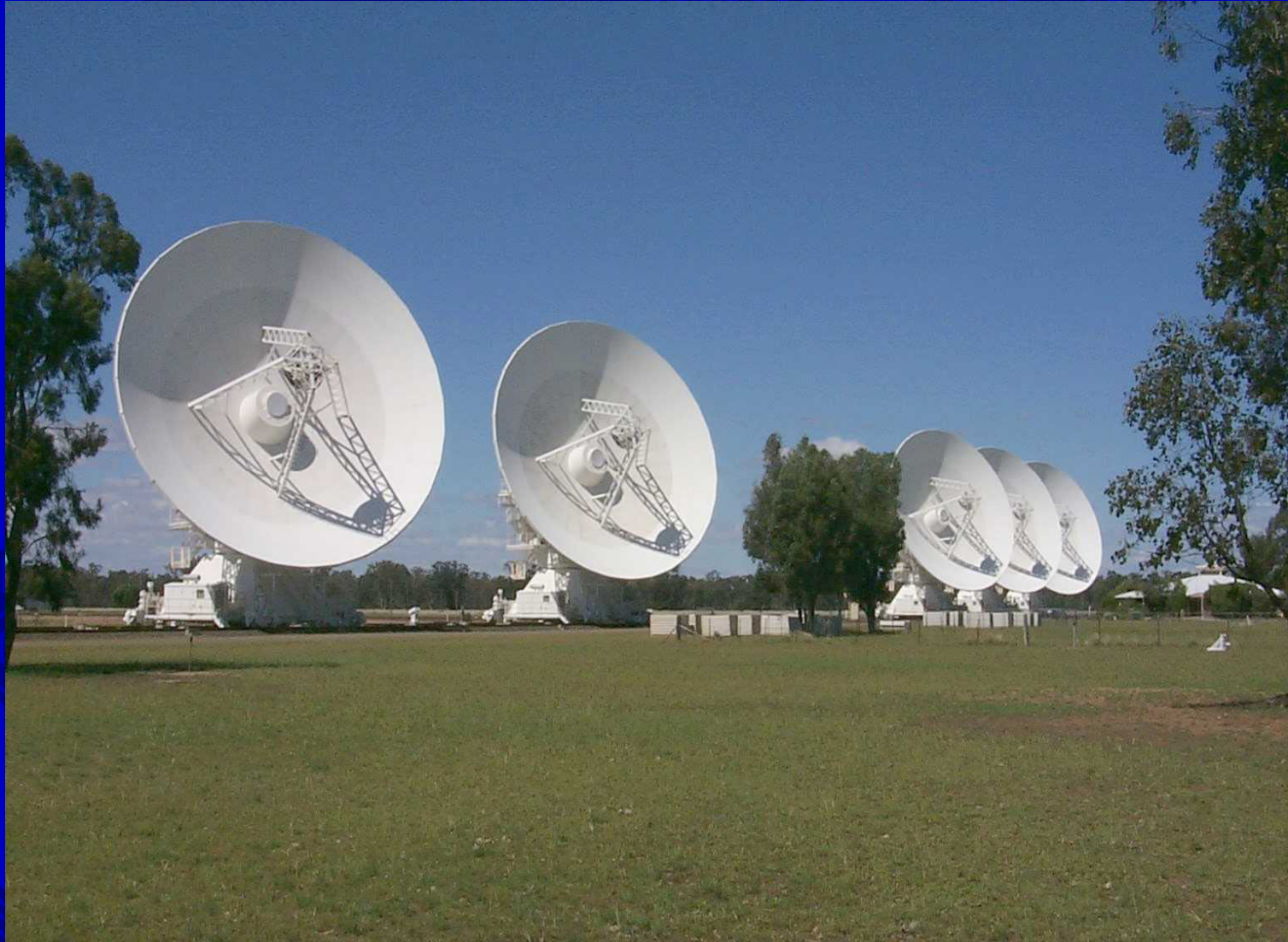
Dish Surface Upgrade.

- New panels in place on “The Dish.”
- 55 m dia. aperture
- 6dB gain increase





CA Narrabri





Extra Stations & North/South Spur



Higher frequency means that in order to get good FOV the antennas should be closer together.

We added a North/South spur to the 3km track to enable the antennas to be placed in a super compact configuration.