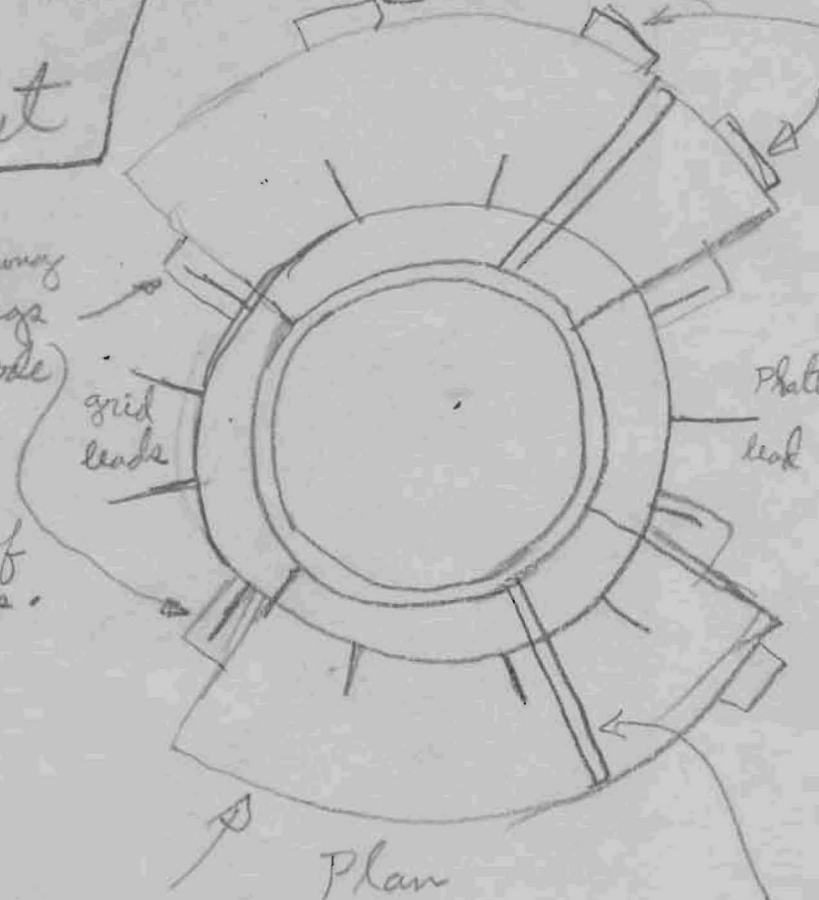




1-10-43
 Tube Socket

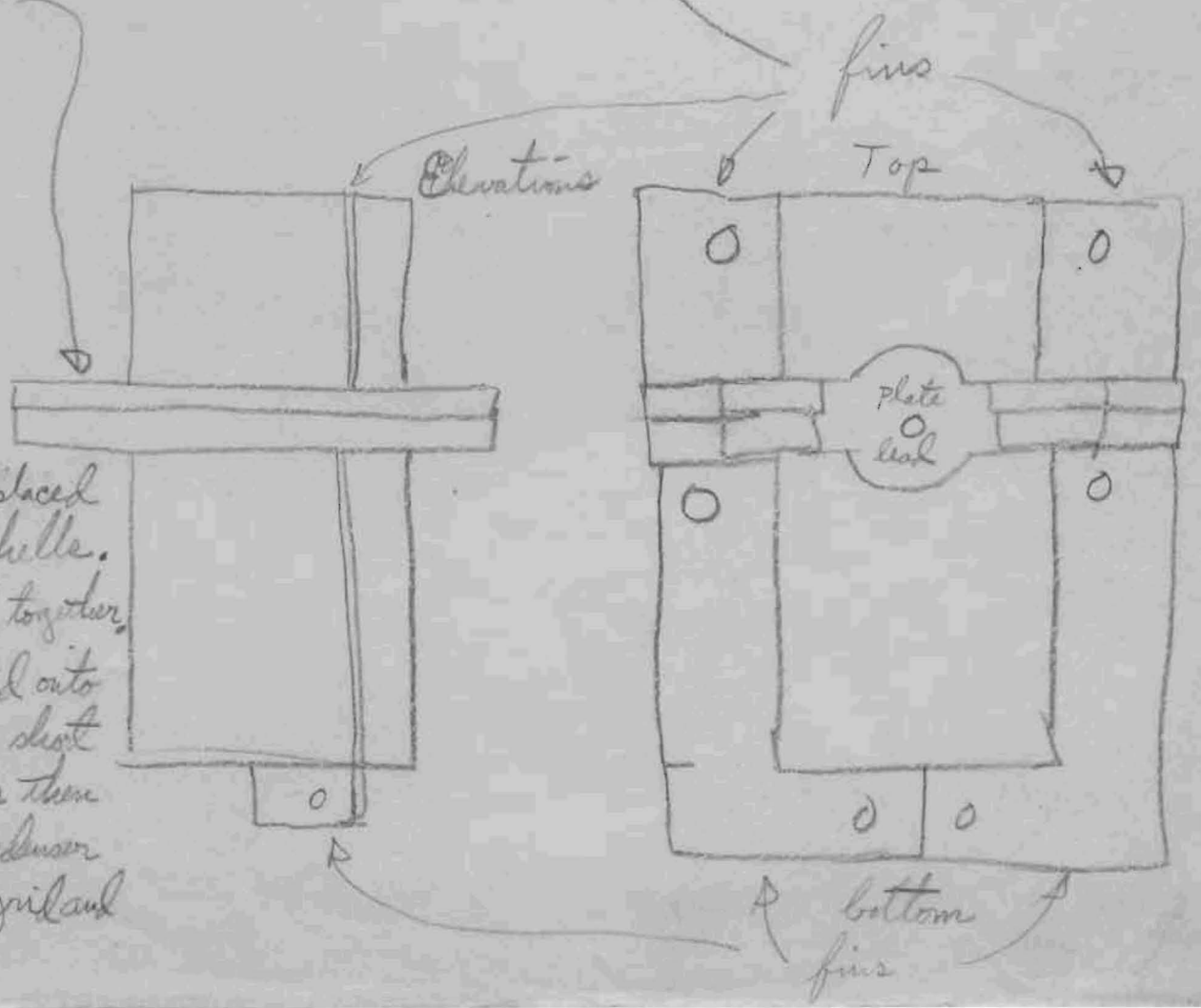
Bypass condenser tabs for D.C. feed wires

Tube prong springs to cathode leads. Rest inside of flanges.

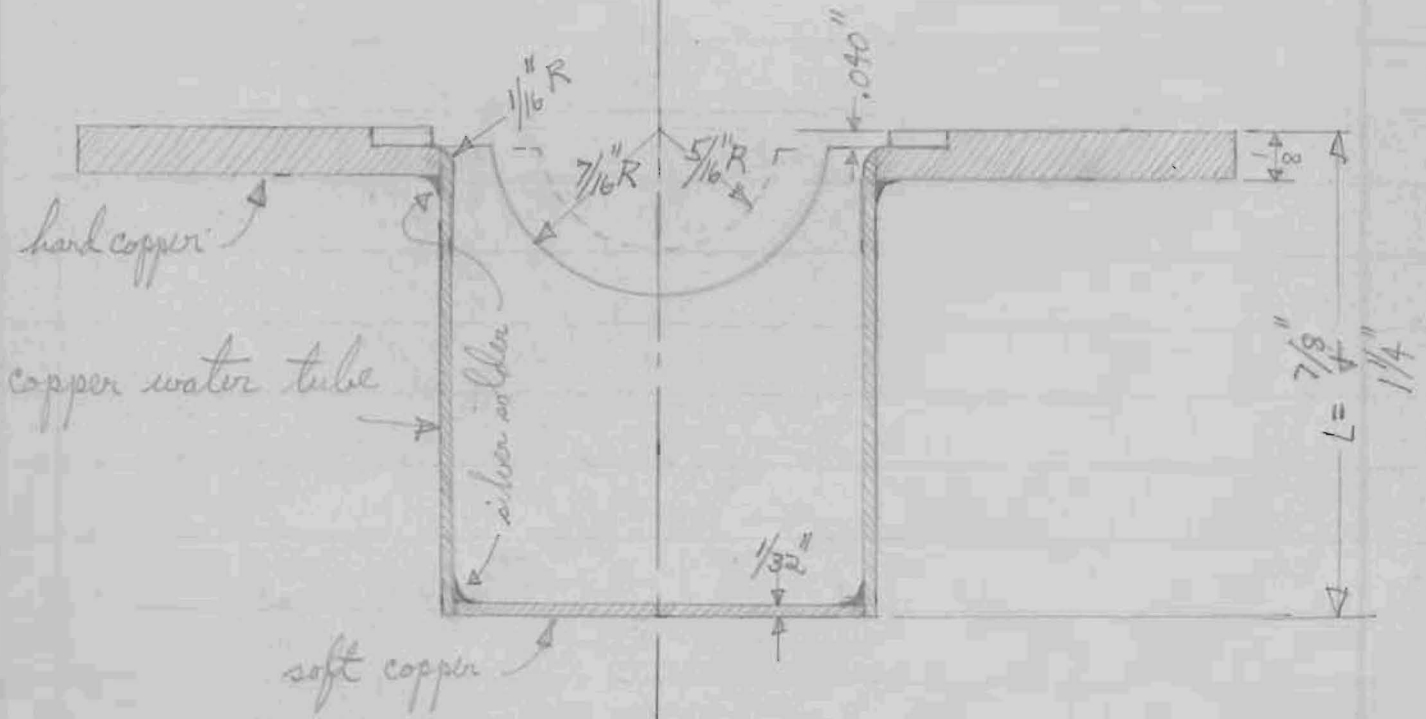
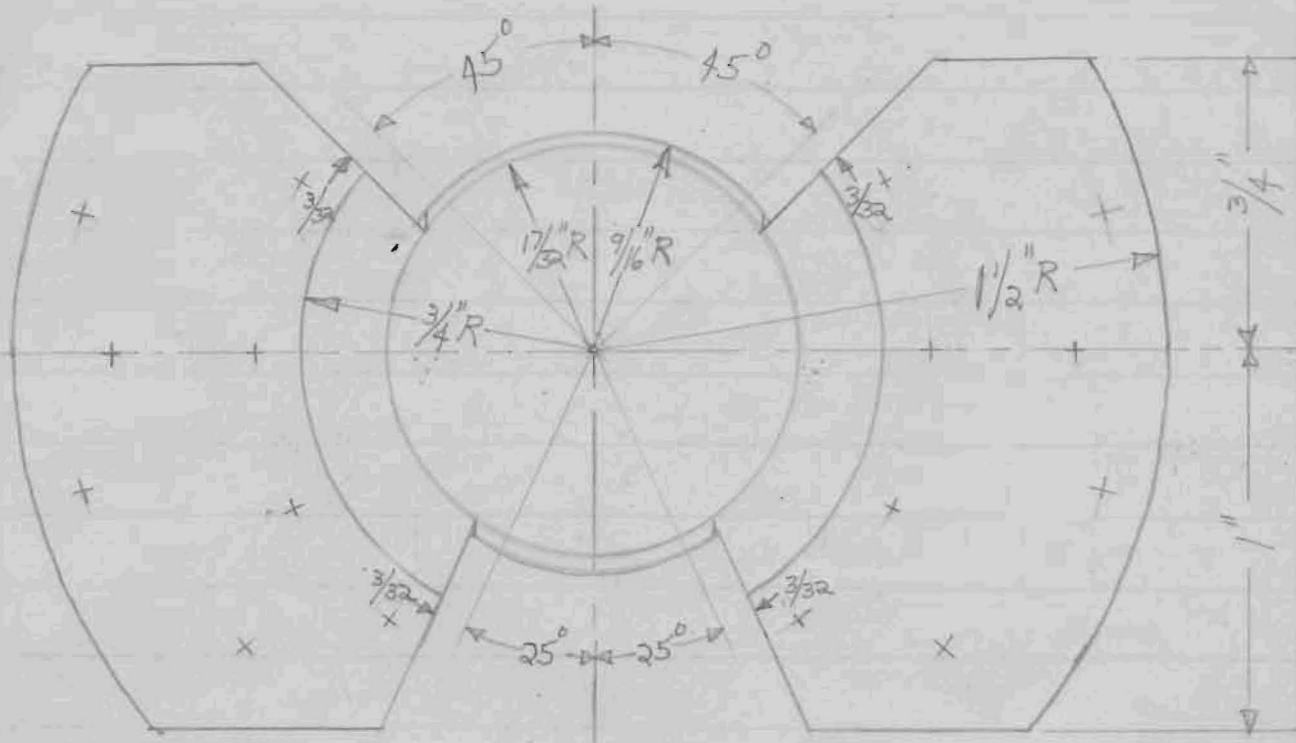


Tube mounts inside top and bottom half shells. Shells are bolted together and bolted to partition between stages by means of fins. All bypass condensers and tube prong springs built into flanges. Openings on opposite sides for grid + plate leads.

Flanges



Tube is first placed between half shells. Shells bolted together, assembly bolted onto partition with short end up. Wires then soldered to condenser tabs and to grid and plate leads.



A5588 A

Tube #

1 1/8 1/8 7/16 5/16 1

1 1/16 1/8 7/16 5/16 2

1 1/8 1/8 1/2 5/16 3

1 1/8 1/8 3/8 3/8 4

1 1/8 1/8 7/16 5/16 5

Height above press Thickness of press Length below press Length at tip

Top

Bottom

tube length from pins 1 3/16 1 3/16

inside socket dimension 1 1/4 7/8

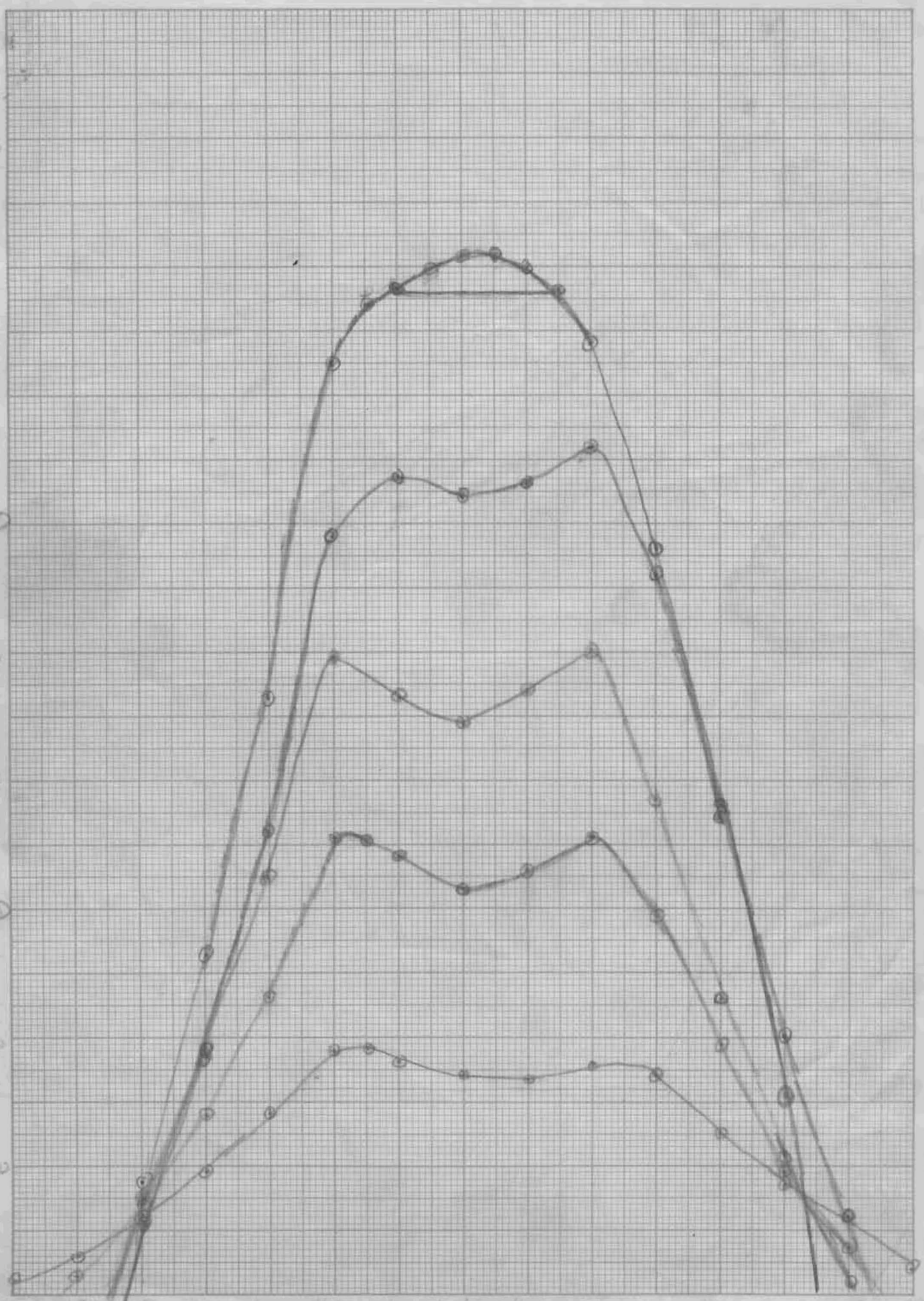
outside socket dimension 1 5/16 1 5/16

Total 2 1/4"

Date

110

90
80
70
60
50
40
30
20
10



REPRODUCED BY PERGAMON PRESS, OXFORD, ENGLAND
10 X 10 TO THE 4th UNIT, 5th LINE ACCENTED
MADE IN U.S.A.

152 154 156 158 160 162 164 166 168 170 172 174 176 178 180