



# Aluminum Company of America

520 NORTH MICHIGAN AVENUE

*Chicago, Ill.*

January 3, 1939

Mr. Grote Reber  
212 West Seminary Avenue  
Wheaton, Illinois

Dear Mr. Reber:

With further reference to your letter of December 17, we have worked out some suggestions covering your proposed cone and drum as detailed on our attached sketches 38242 and 38243.

For the cone of #14 gauge Alcoa 3S-1/2H flat sheet, in accordance with our sketch 38242, with welds finished, and finish as fabricated we are glad to quote you a price of \$70.63 each in lots of one.

For the drum of #14 gauge Alcoa 3S flat sheet, 8-7/16" O.D. x 16" deep in accordance with our sketch 38243, with welds finished, and finish as fabricated, the price would be \$8.60 in lots of two. In addition there is a Chuck charge of \$3.00. *each*

These prices are quoted f.o.b. shipping point and are subject to change without notice.

Needless to say, we appreciate this opportunity of quoting and hope that we may hear favorably from you.

Very truly yours,

ALUMINUM COMPANY OF AMERICA

ROSWELL B. WHIDDEN  
Local Sales Manager

BY *R. B. Whidden*

JNV:GA  
ENC1.(2)

METAL - 14 GA. (.064") 35 1/4 H F.S.

JRY

GROTE REBER

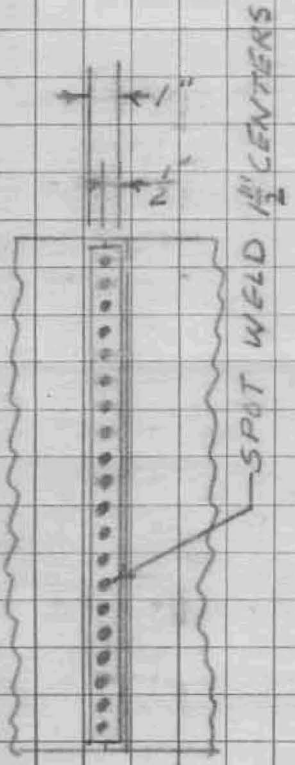
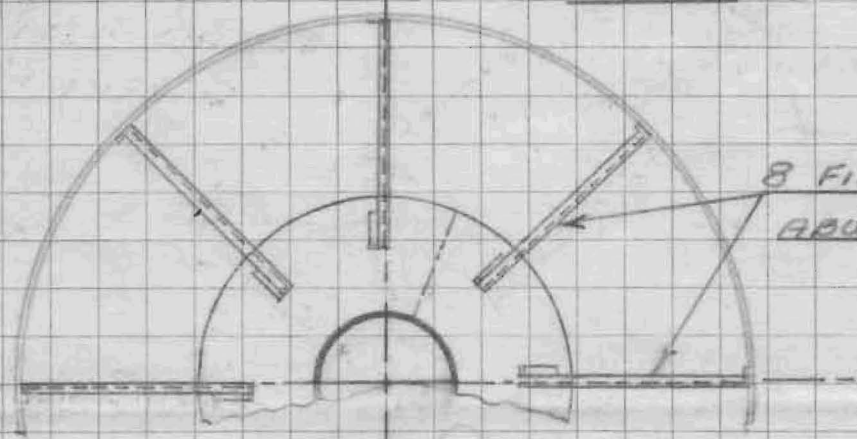
NOTES:-

1. BUTT WELD CHIPPED AND HAMMERED

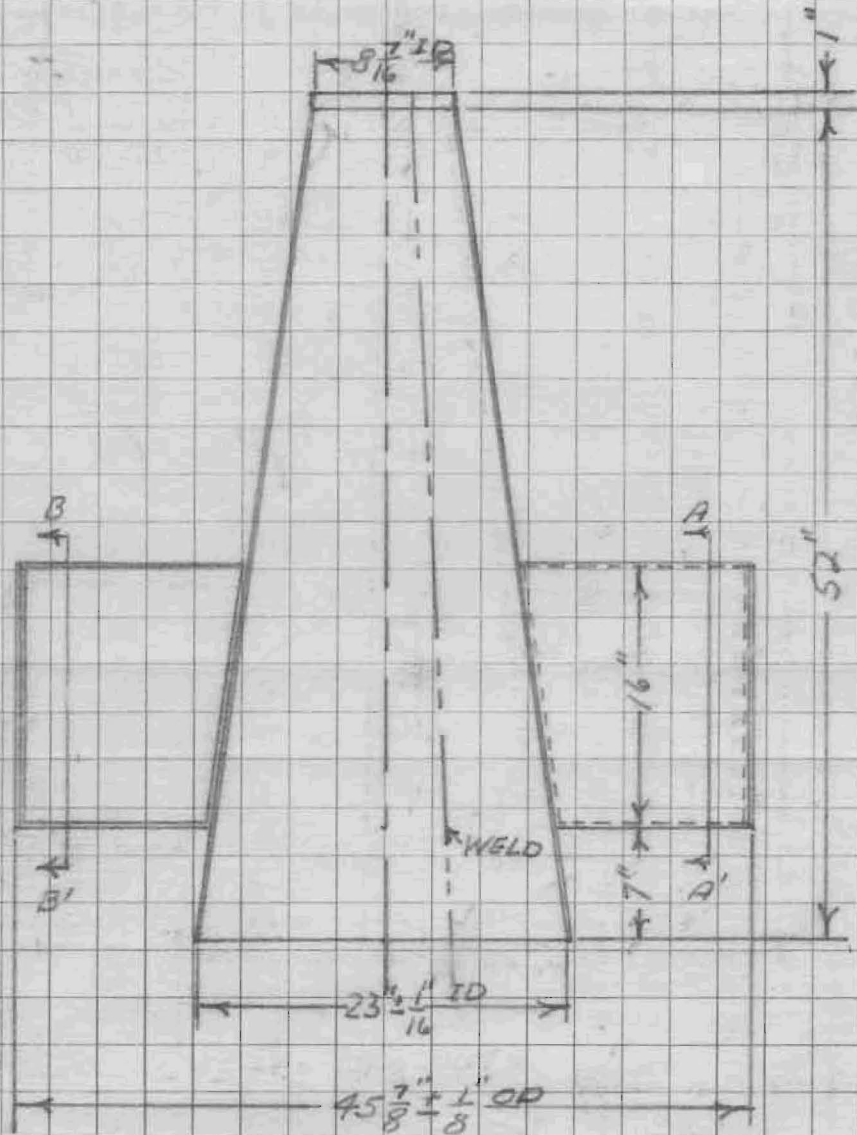
2. NATURAL METAL FINISH

CONE

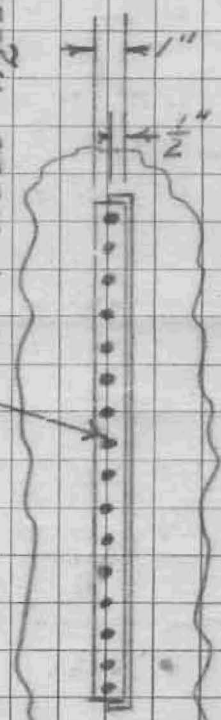
8 FINS EQUI-SPACED ABOUT CONE



BB'



SPOT WELD - 1/2" CENTERS



AA'

SCALE - 1" = 2" = 1 FT.

METAL - 14 GA. (.064") 35 FS.

JRY

GROTE REBER

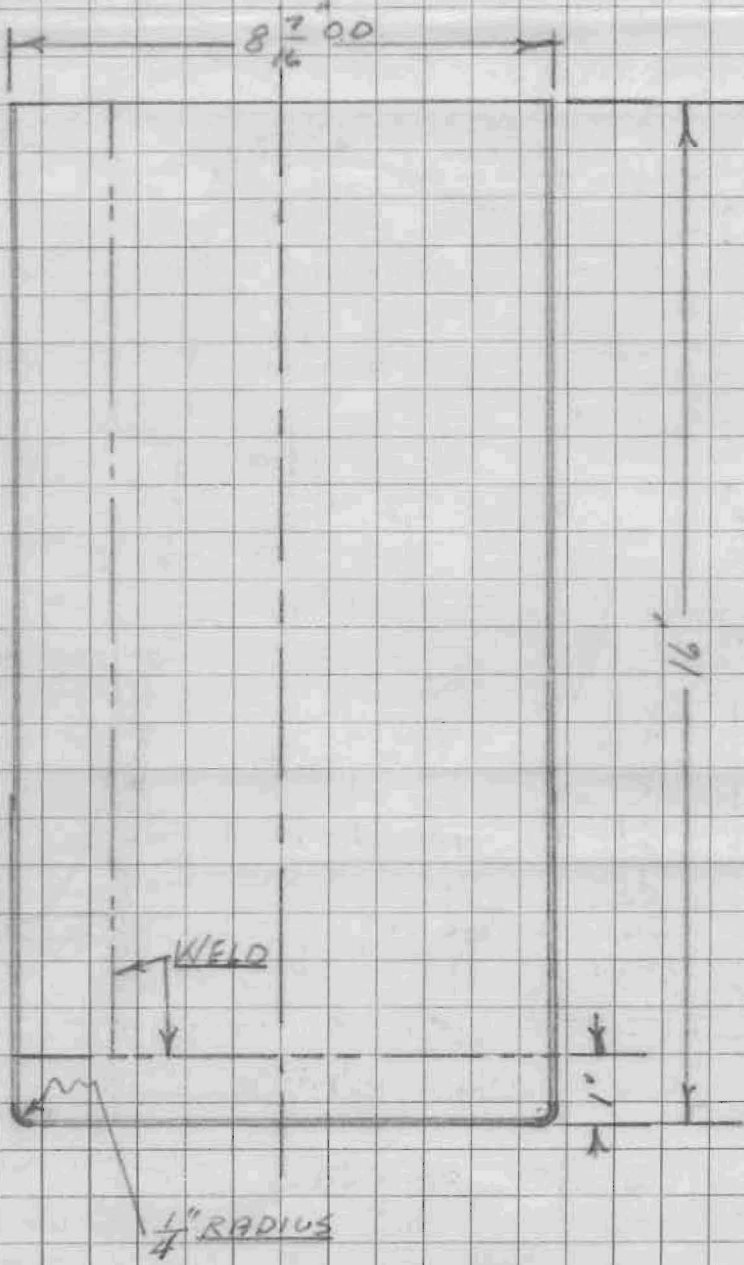
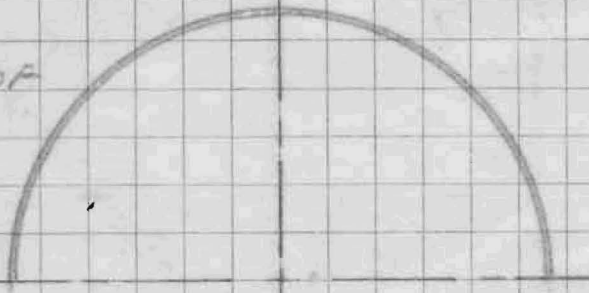
DRUM.

NOTES:-

1. CHIP AND HAMMER WELDS.

2. OUTSIDE DIAMETER OF DRUM TO PROVIDE SLIP FIT INTO TOP OF CONE IN J.D. SKETCH 3824Y.

3. NATURAL METAL FINISH



METAL - 14 GA. (.064") 35 1/2 H.F.S.

JRY

GROTE REBER

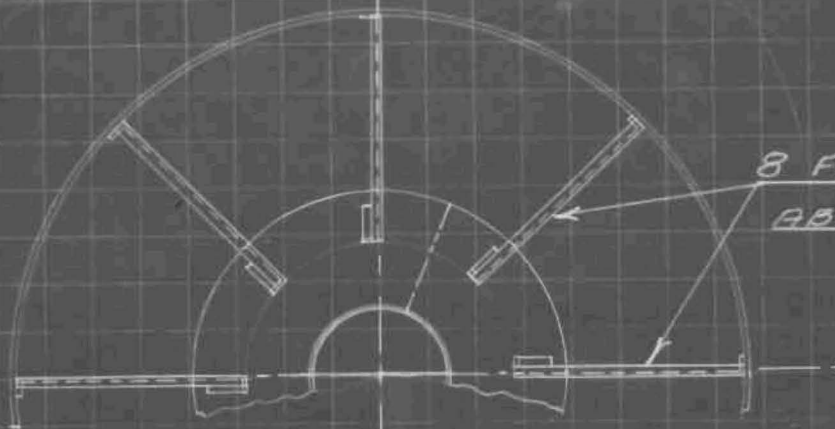
CONE

NOTES:-

1. BUTT WELD CHIPPED AND HAMMERED

2. NATURAL METAL FINISH

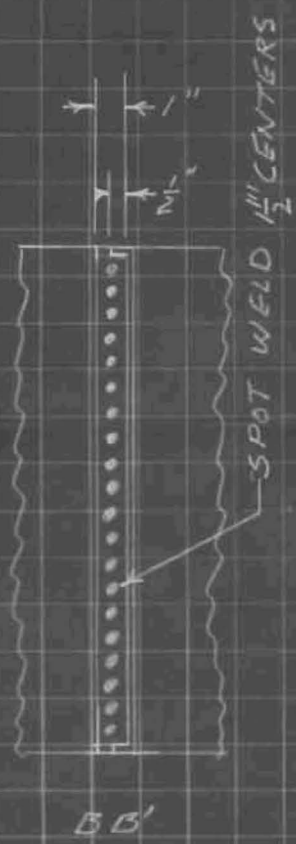
3. CONE TO SLIP INSIDE RING FURNISHED ABOVE ON UNGO.58895 AS PER D/P-38074D



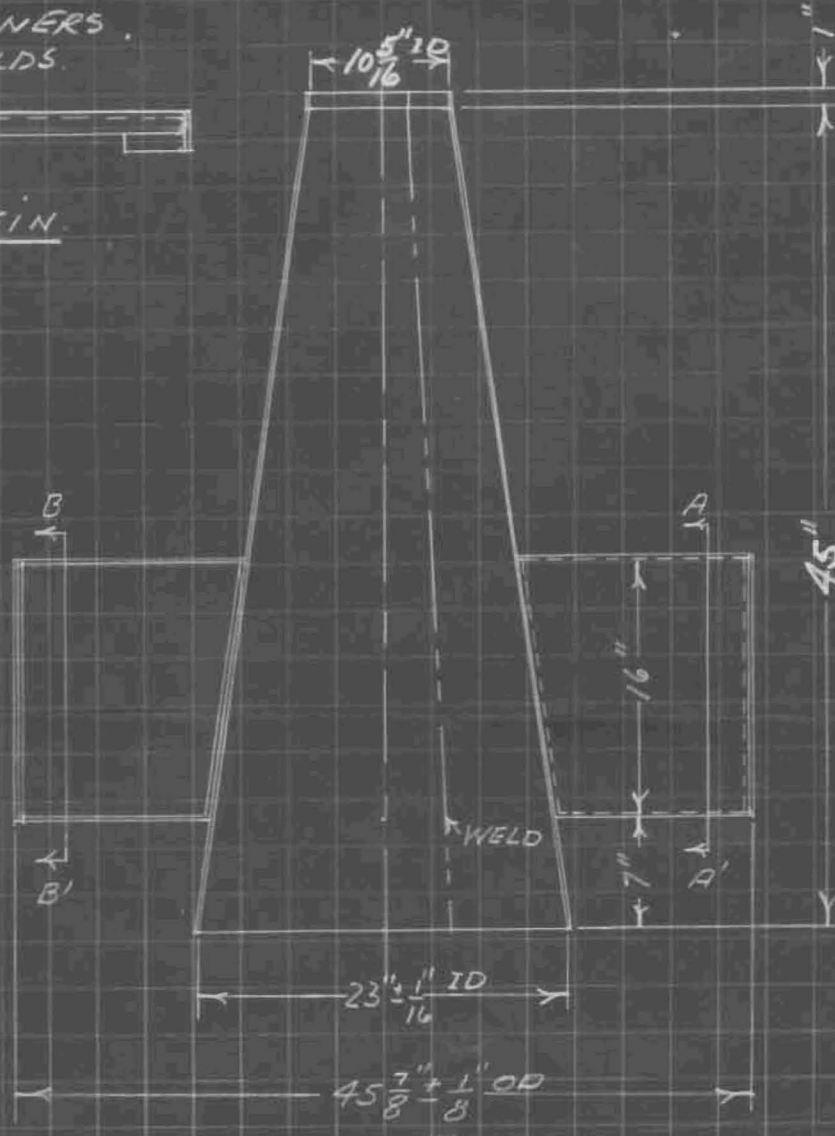
8 FINS EQUI-SPACED ABOUT CONE

WELD 4 CORNERS. DRESS WELDS.

PLAN OF FIN.



SPOT WELD 1/2" CENTERS



45" SPOT WELD 1/2" CENTERS

45"

23 1/16" ID

45 7/8" OD

WELD

SCALE - 1" = 2" = 1 FT.

METAL - 14 GA (.064"), 3S FS.

JRY

GROTE REBER

NOTES:-

1. CHIP AND HAMMER WELDS.

DRUM.

2. OUTSIDE DIAMETER OF DRUM TO PROVIDE SLIP FIT INTO TOP OF CONE IN J.D. SKETCH 3824V



3. NATURAL METAL FINISH

