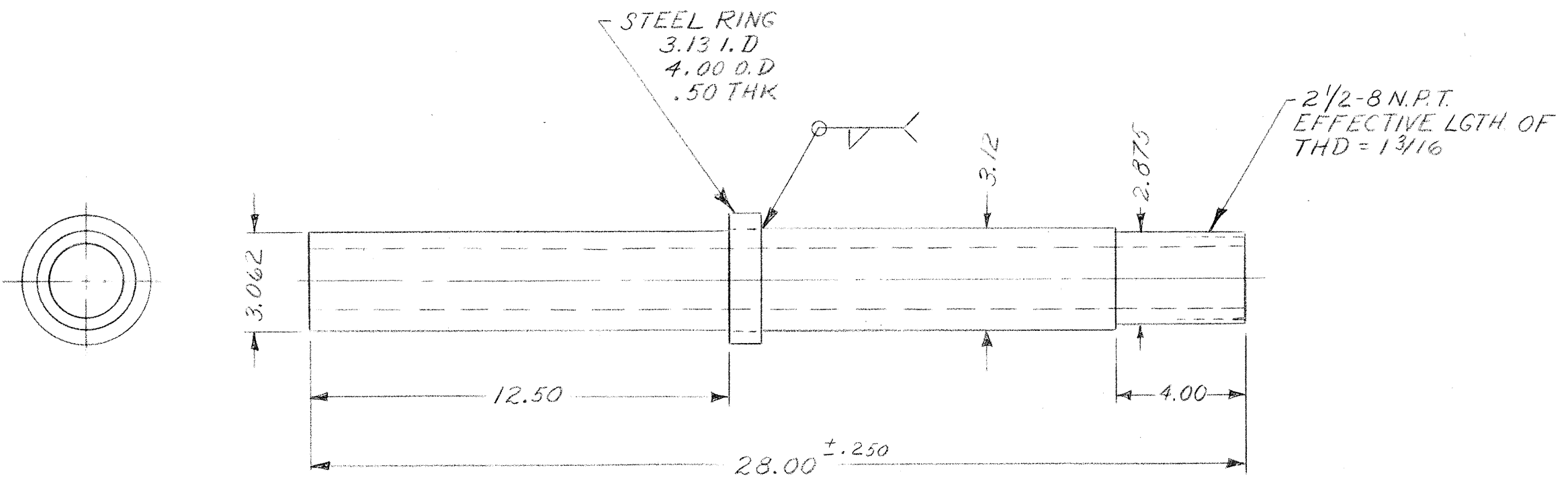


ISSUE 1
B-608241

P-
ENGR A.C. BECK
DRAWN S.V. BENNETT
9-10-63 ISSUE 1



USED ON
DWG

CENTER POST,
JANSKY ANTENNA

SCALE 1/4

WESTERN ELECTRIC CO. INC.
ENGINEER OF MANUFACTURE
CENTRAL OFFICE EQUIPMENT

BELL TELEPHONE
LABORATORIES
INCORPORATED

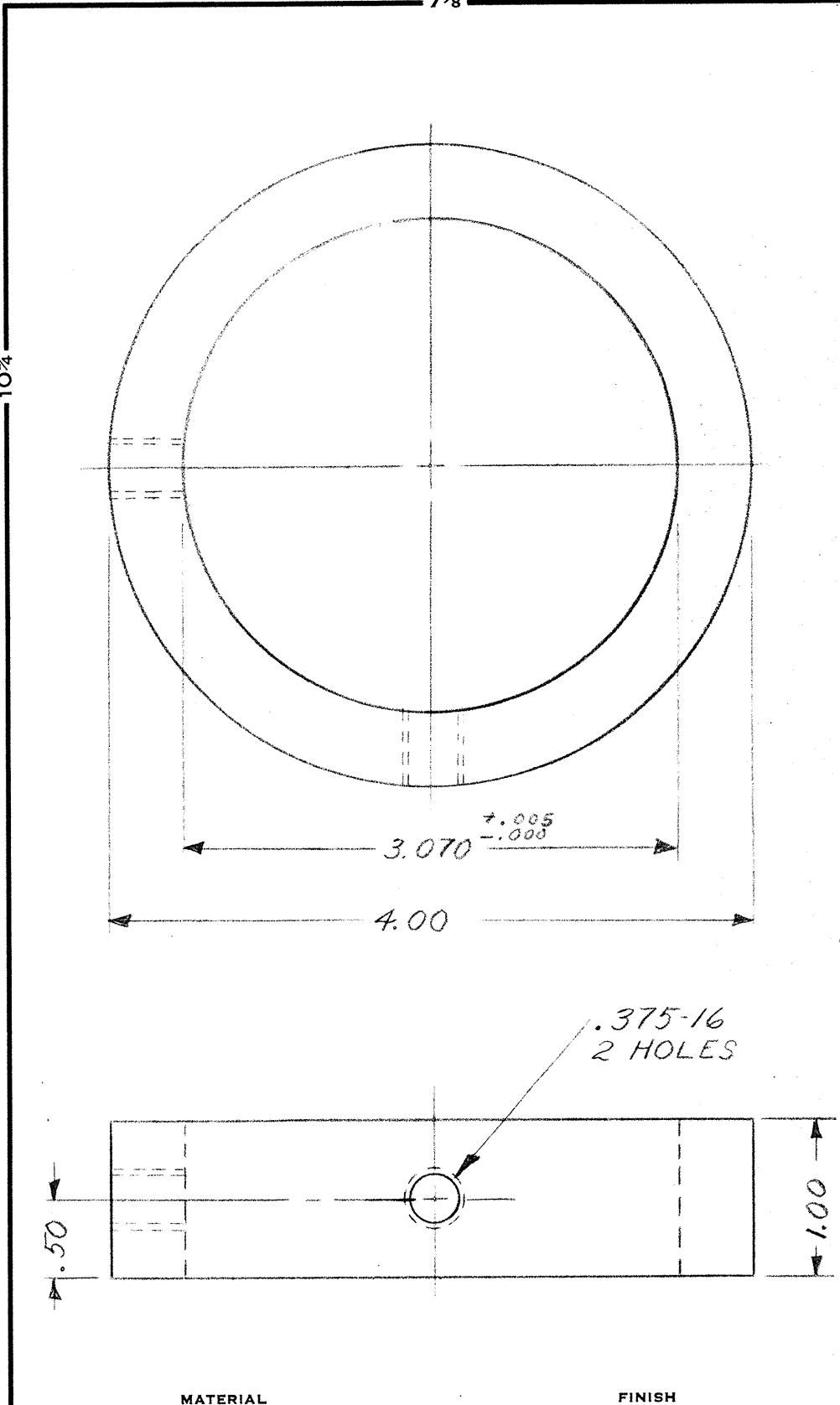
MATERIAL	FINISH
SHELBY STEEL TUBING 3 1/8 O.D. x 7/16 WALL	
UNLESS OTHERWISE SPECIFIED, ALL DIMENSIONS ARE IN INCHES. NONLIMITED DIMENSIONS OTHER THAN SIZE OF RAW MATERIAL SHALL BE HELD AS FOLLOWS WHEN EXPRESSED: TO 2 DECIMAL PLACES ± .02 AS ANGLES ± TO 3 DECIMAL PLACES ± .005	
FOR GENERAL INFORMATION ON SYMBOLS AND NOTES REFER TO MANUFACTURING STANDARD 16.003, PART 2, SECTION 227.	
DWG SIZE 2S	

CDS
P-
B-608241

P-

10 1/4

HERCULENE® 56999
DRAFTING FILM



P-

ENGR A.C. BECK		
DRAWN S.J. BENNETT		
9-10-63	ISSUE	

USED ON	DWG
---------	-----

COLLAR

SCALE 1/1

WESTERN ELECTRIC CO. INC.
ENGINEER OF MANUFACTURE
CENTRAL OFFICE EQUIPMENT

BELL TELEPHONE
LABORATORIES
INCORPORATED

C	B-608242
D	
S	
P-	

MATERIAL	FINISH
BRASS	

UNLESS OTHERWISE SPECIFIED, ALL DIMENSIONS ARE IN INCHES. NONLIMITED DIMENSIONS OTHER THAN SIZE OF RAW MATERIAL SHALL BE HELD AS FOLLOWS WHEN EXPRESSED:

TO 2 DECIMAL PLACES $\pm .02$ AS ANGLES \pm

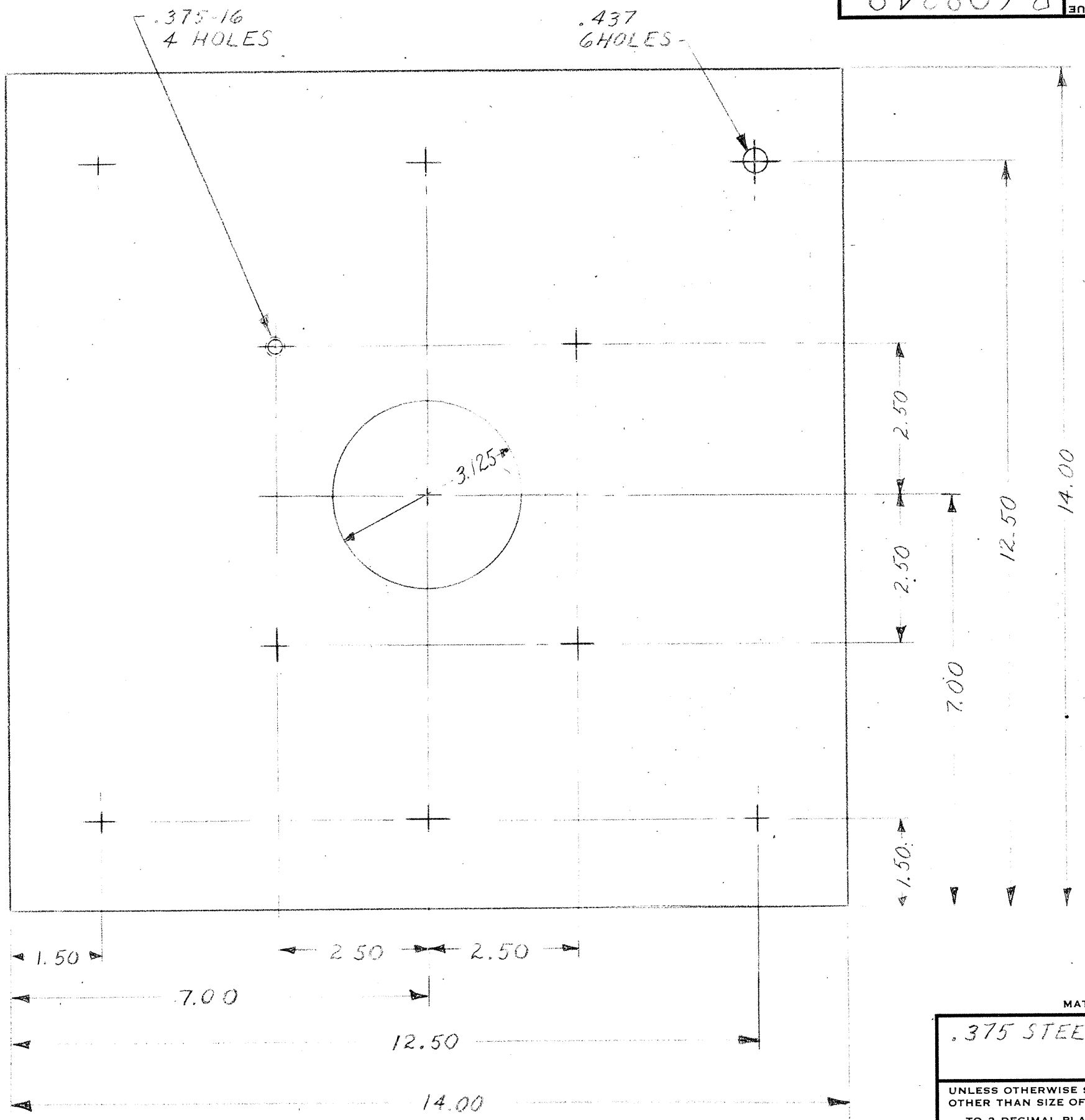
TO 3 DECIMAL PLACES $\pm .003$

FOR GENERAL INFORMATION ON SYMBOLS AND NOTES REFER TO MANUFACTURING STANDARD 16.003, PART 2, SECTION 227.

DWG SIZE
1S

ISSUE 1 B-608249

P-		
ENGR A. G. BECK		
DRAWN S. J. BENNETT		
10-23-63	ISSUE	



MATERIAL	FINISH
.375 STEEL PLATE	
UNLESS OTHERWISE SPECIFIED, ALL DIMENSIONS ARE IN INCHES. NONLIMITED DIMENSIONS OTHER THAN SIZE OF RAW MATERIAL SHALL BE HELD AS FOLLOWS WHEN EXPRESSED:	
TO 2 DECIMAL PLACES ± .01	AS ANGLES ±
TO 3 DECIMAL PLACES ± .003	
FOR GENERAL INFORMATION ON SYMBOLS AND NOTES REFER TO MANUFACTURING STANDARD 16,003, PART 2, SECTION 227.	
DWG SIZE	2S
CDS	P-

USED ON	DWG
PLATE	
SCALE 1/2	
WESTERN ELECTRIC CO. INC. ENGINEER OF MANUFACTURE CENTRAL OFFICE EQUIPMENT	
BELL TELEPHONE LABORATORIES INCORPORATED	
B-608249	

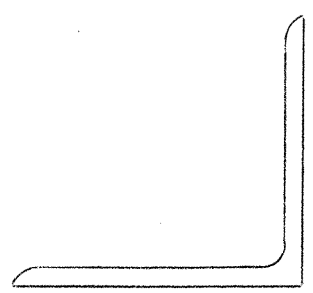
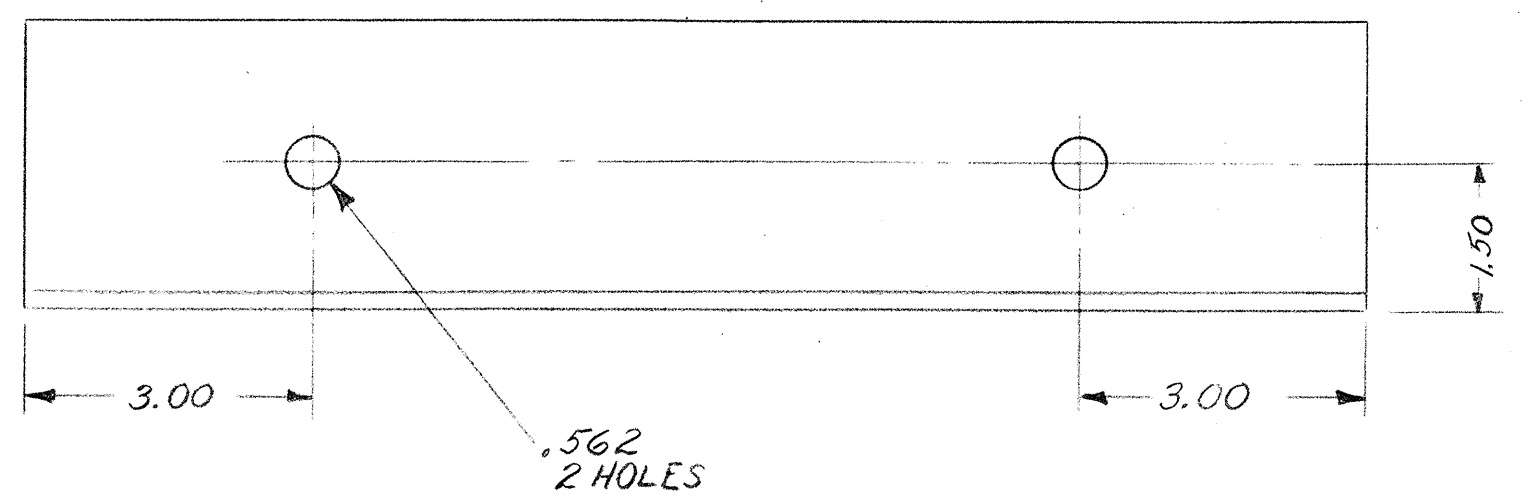
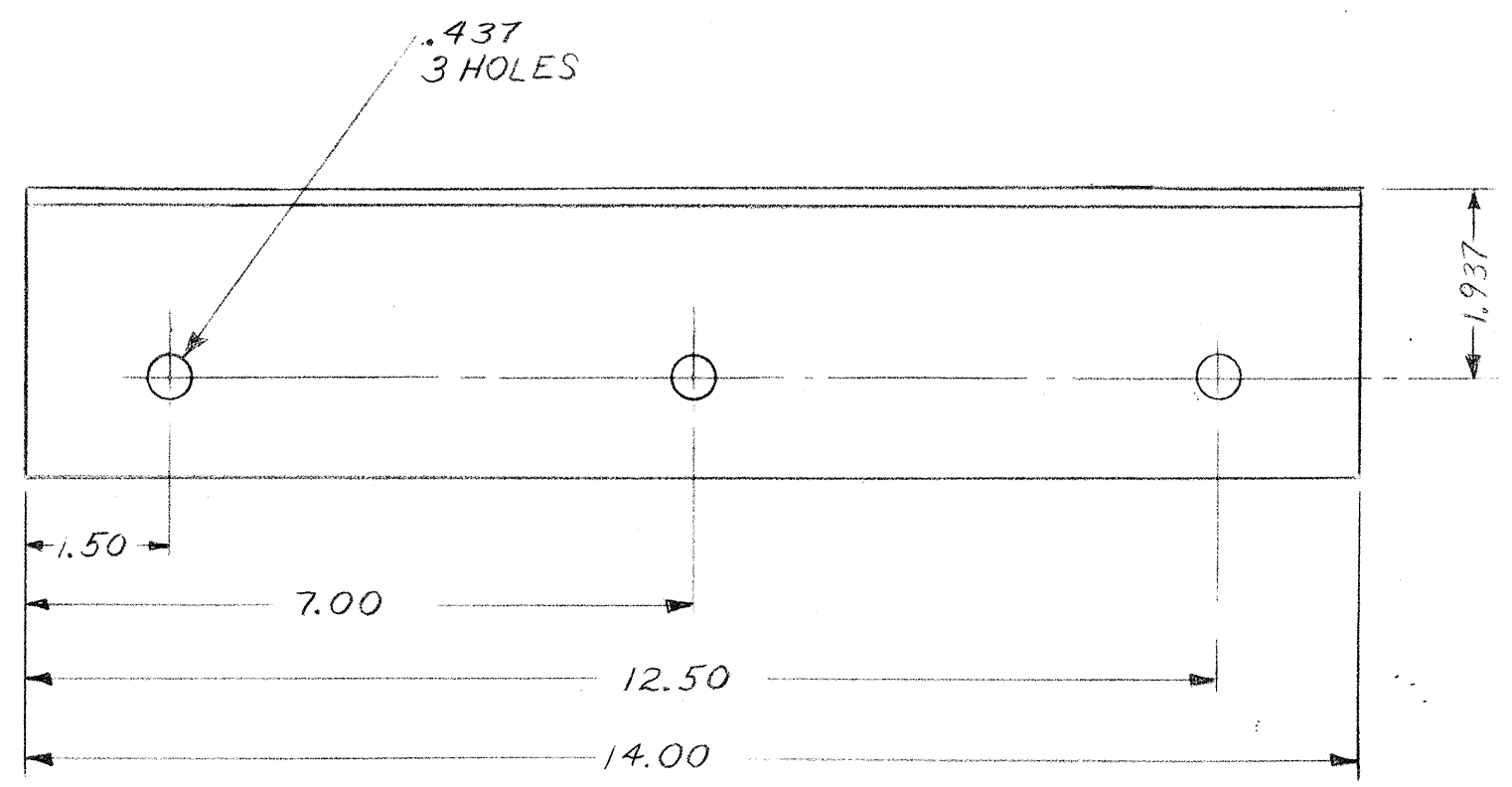
P- 10 1/4

HERCULENE 56999 DRAFTING FILM

1 B-608251 ISSUE

P-

ENGR.	A. C. BECK
DRAWN	S. J. BENNETT
10-23-63	ISSUE 1



MATERIAL	FINISH
3x3x 3/16 STEEL ANGLE	

UNLESS OTHERWISE SPECIFIED, ALL DIMENSIONS ARE IN INCHES. NONLIMITED DIMENSIONS OTHER THAN SIZE OF RAW MATERIAL SHALL BE HELD AS FOLLOWS WHEN EXPRESSED:
 TO 2 DECIMAL PLACES ± .01 AS ANGLES ±
 TO 3 DECIMAL PLACES ± .003
 FOR GENERAL INFORMATION ON SYMBOLS AND NOTES REFER TO MANUFACTURING STANDARD 16.003, PART 2, SECTION 227.

DWG SIZE 2S

USED ON	DWG
ANGLE	
SCALE 1/2	
WESTERN ELECTRIC CO. INC. ENGINEER OF MANUFACTURE CENTRAL OFFICE EQUIPMENT	
BELL TELEPHONE LABORATORIES INCORPORATED	
C D S P-	B-608250

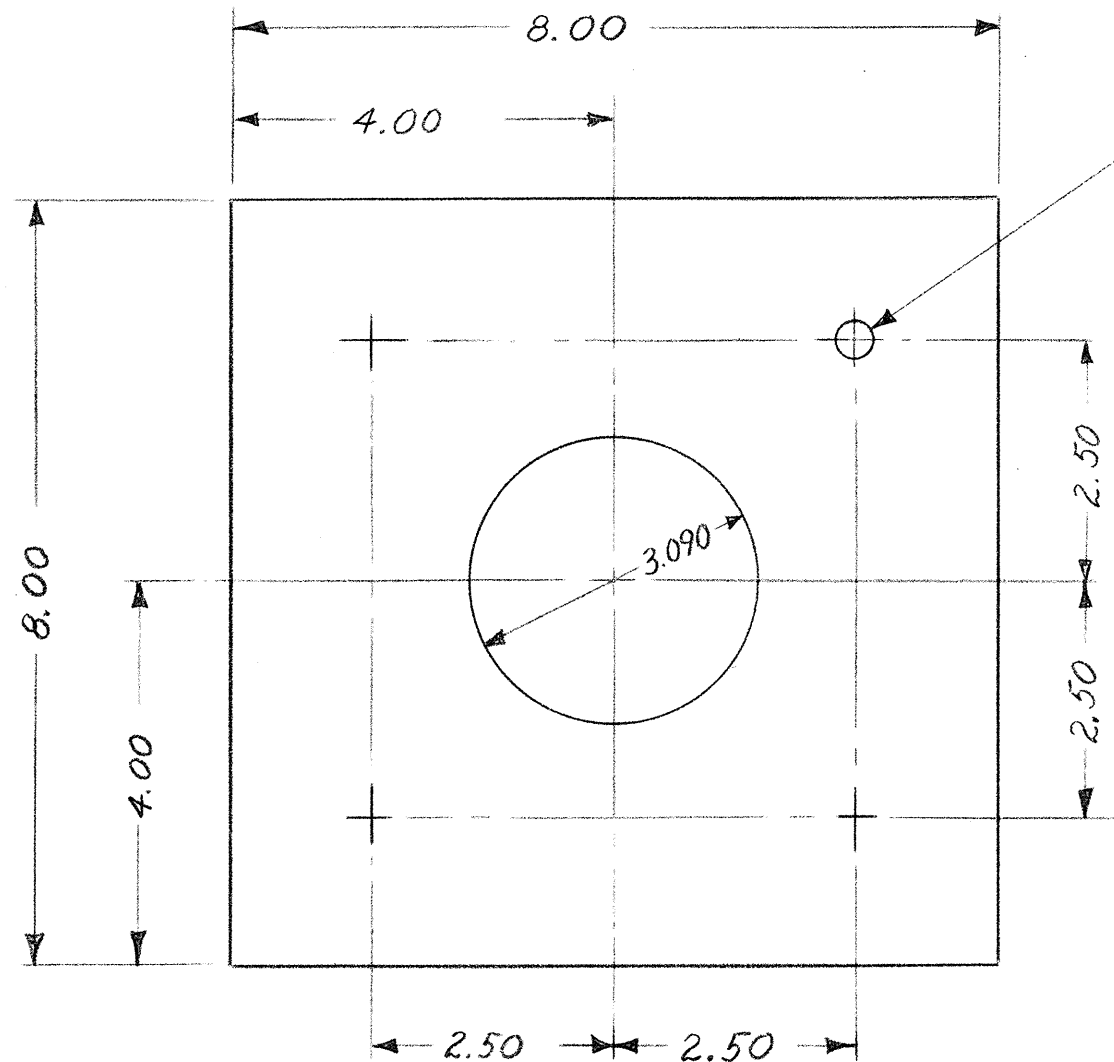
P-

10 1/4

15 5/8

ISSUE 1 | B-608251

P-	
ENGR A. C. BECK	
DRAWN S. J. BENNETT	
10-23-63	ISSUE 1



.406
4 HOLES

USED ON	DWG
---------	-----

PLATE

SCALE 1/2

WESTERN ELECTRIC CO. INC.
ENGINEER OF MANUFACTURE
CENTRAL OFFICE EQUIPMENT

BELL TELEPHONE
LABORATORIES
INCORPORATED

C	B-608251
D	
S	P-
P-	

MATERIAL	FINISH
.50 HARD BRASS	

UNLESS OTHERWISE SPECIFIED, ALL DIMENSIONS ARE IN INCHES. NONLIMITED DIMENSIONS OTHER THAN SIZE OF RAW MATERIAL SHALL BE HELD AS FOLLOWS WHEN EXPRESSED:

TO 2 DECIMAL PLACES ± .01 AS ANGLES ±

TO 3 DECIMAL PLACES ± .003

FOR GENERAL INFORMATION ON SYMBOLS AND NOTES REFER TO MANUFACTURING STANDARD 16.003, PART 2, SECTION 227.

DWG SIZE
2S

P-

10 1/4

15 5/8

3 1/4

BOOK FOLD 2

BOOK FOLD 3

BOOK FOLD 4

BOOK FOLD 5

P-

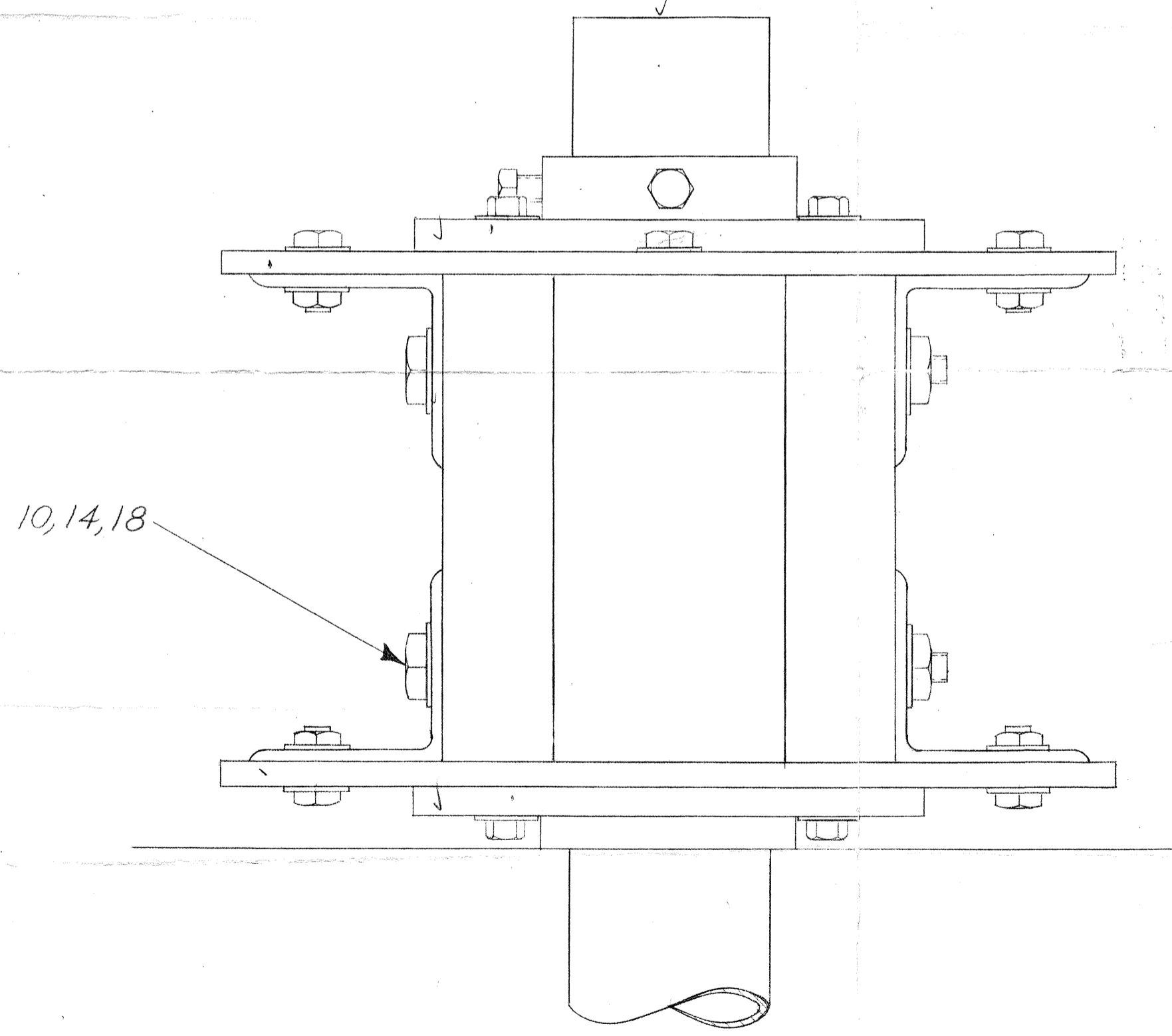
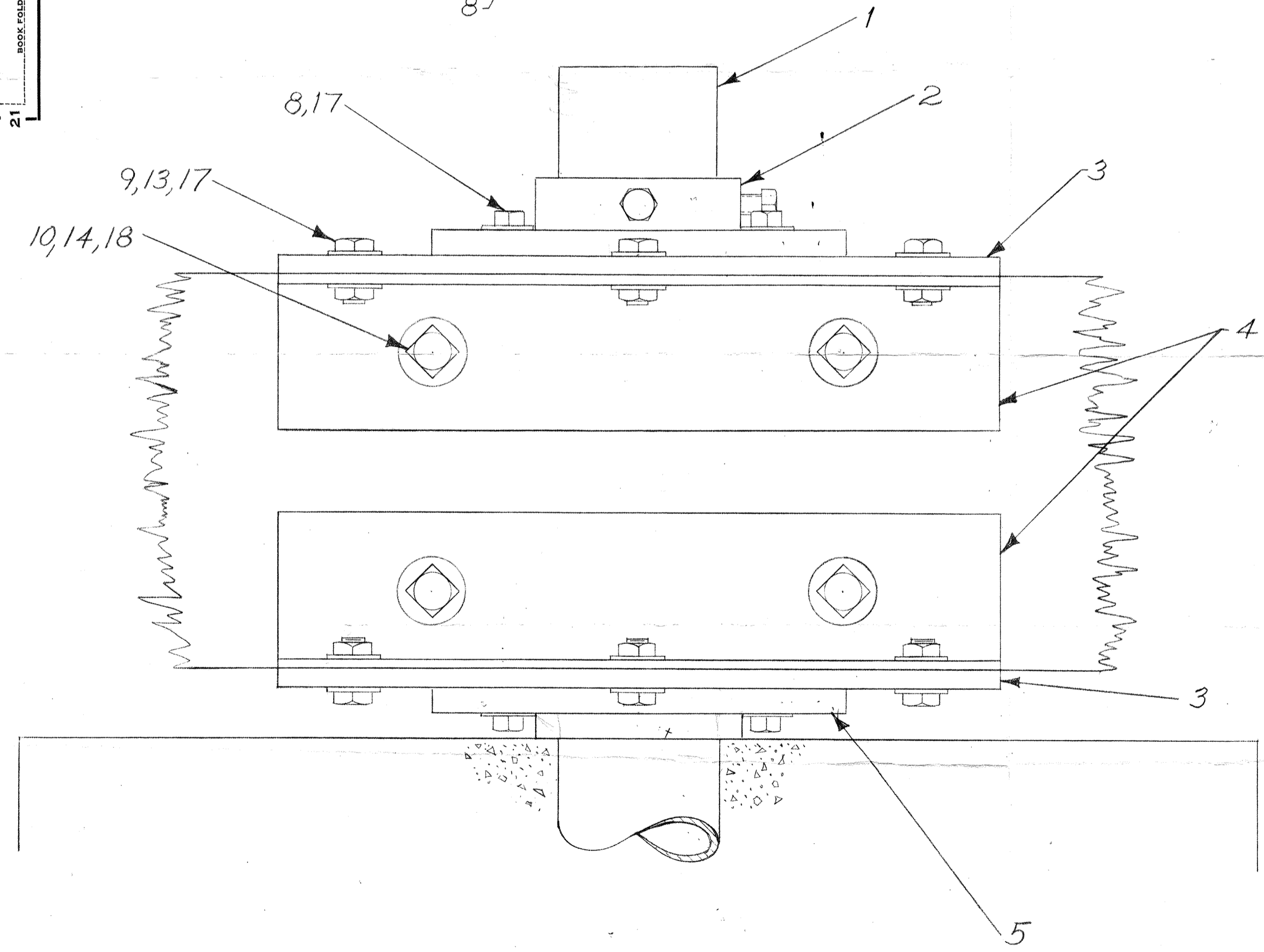
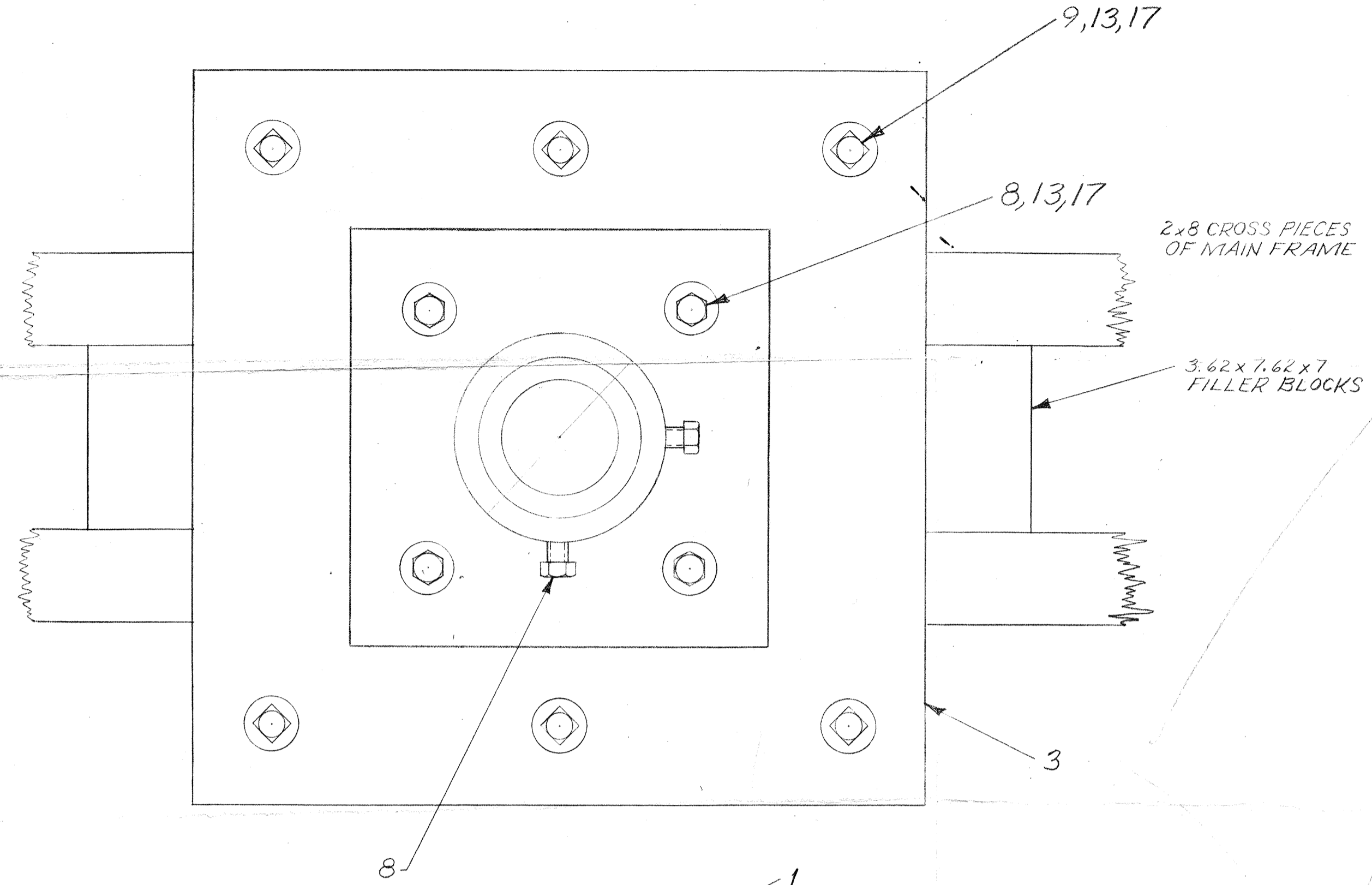
FOR BECK
DRAWN BY BENNETT
ISSUE 1 10-29-63

LOOSE PRINT FOLD 1

FOLD BOOK

LOOSE PRINT FOLD 4

1 B-608252



18	WASHER, PLAIN-STL, 17/32x1 1/16x.095	8
17	WASHER, PLAIN-STL, 7/16x 7/8x.083	32
16		
15		
14	NUT, REG SQ, STL, .500-13	4
13	NUT, REG SQ, STL, .375-16	6
12		
11		
10	BOLT, REG SQ H, STL, .500-13x 8	4
9	BOLT, REG SQ H, STL, .375-16x 1	12
8	SCR, HEX H CAP, STL, .375-16x 7/8	10
7		
6		
5	B-608251	2
4	B-608250	4
3	B-608249	2
2	B-608242	1
1	B-608241	1

USED ON DWG

CENTER BEARING ASSEMBLY, JANSKY ANTENNA

SCALE 1/2

WESTERN ELECTRIC CO. INC. ENGINEER OF MANUFACTURE CENTRAL OFFICE EQUIPMENT

BELL TELEPHONE LABORATORIES INCORPORATED

C D S P- B-608252

STOCK LIST
UNLESS OTHERWISE SPECIFIED, ALL DIMENSIONS ARE IN INCHES. NONLIMITED DIMENSIONS OTHER THAN SIZE OF RAW MATERIAL SHALL BE HELD AS FOLLOWS WHEN EXPRESSED TO 2 DECIMAL PLACES ± AS ANGLES ± TO 3 DECIMAL PLACES ±
FOR GENERAL INFORMATION ON SYMBOLS AND NOTES REFER TO MANUFACTURING STANDARD 16.003, PART 2, SECTION 227. (THIS NOTE IS NOT APPLICABLE TO CENTRAL OFFICE EQUIPMENT.)

DWG SIZE 6S

ISSUE 1
B-608253

P-

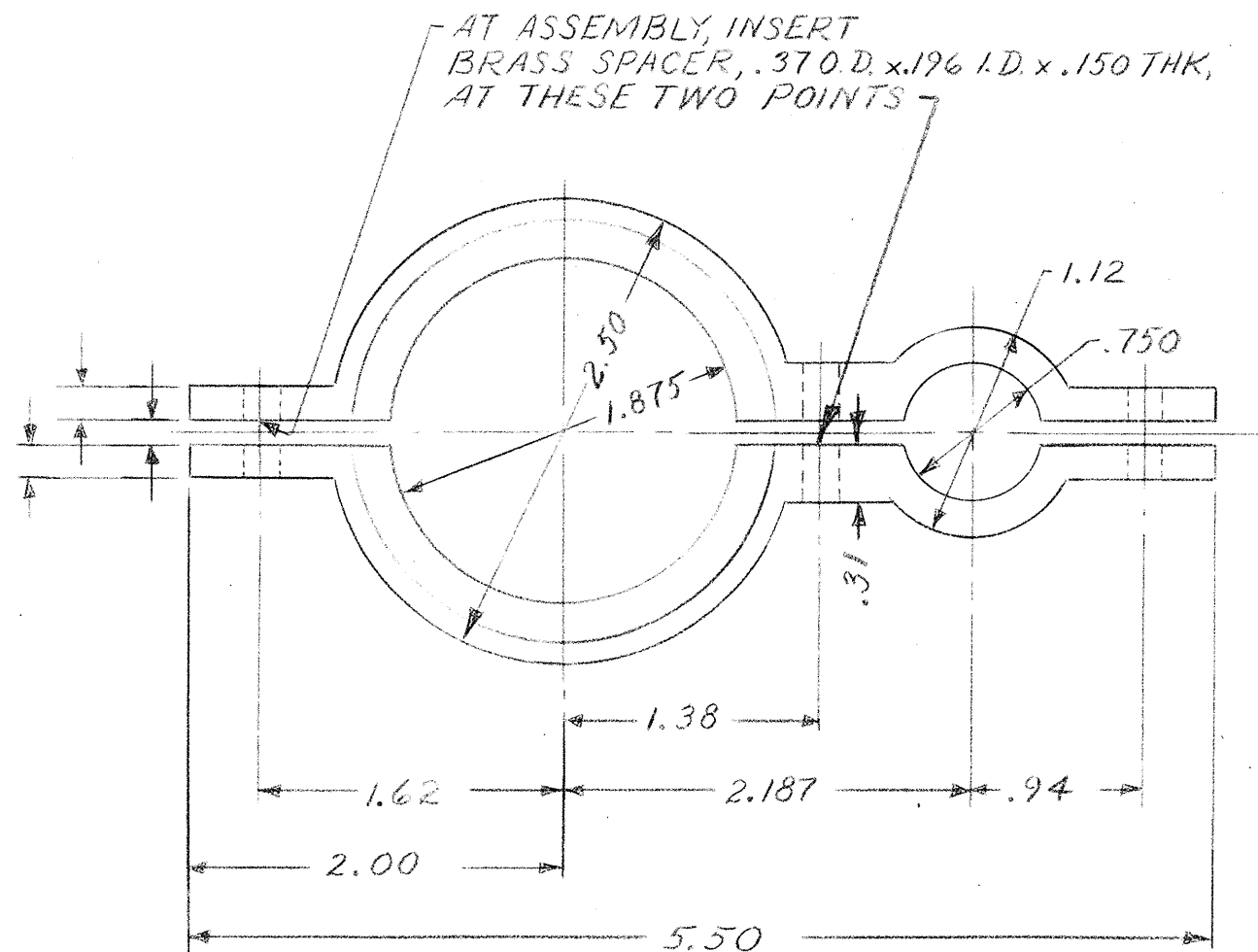
ENGR
A.C. BECK
DRAWN
S.J. BENNETT

11-15-63

ISSUE 1

P-

10 1/4



.196
3 HOLES



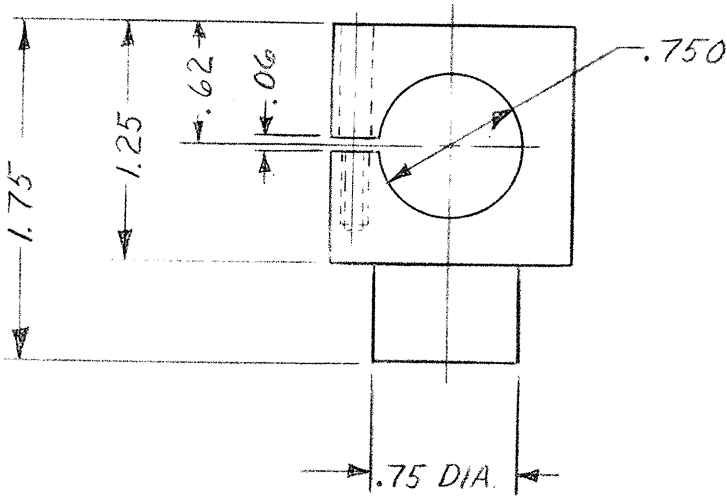
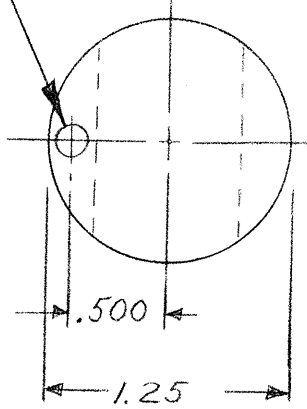
MATERIAL	FINISH
BRASS	
UNLESS OTHERWISE SPECIFIED, ALL DIMENSIONS ARE IN INCHES. NONLIMITED DIMENSIONS OTHER THAN SIZE OF RAW MATERIAL SHALL BE HELD AS FOLLOWS WHEN EXPRESSED:	
TO 2 DECIMAL PLACES ± .01	AS ANGLES ±
TO 3 DECIMAL PLACES ± .003	
FOR GENERAL INFORMATION ON SYMBOLS AND NOTES REFER TO MANUFACTURING STANDARD 16.003, PART 2, SECTION 227.	
DWG SIZE	2S

USED ON	DWG
CLAMP	
SCALE 1-1	
WESTERN ELECTRIC CO. INC. ENGINEER OF MANUFACTURE CENTRAL OFFICE EQUIPMENT	
BELL TELEPHONE LABORATORIES INCORPORATED	
CDS	B-608253
P-	

7 1/8

.169 DR TO SLOT
TAP .164-32, .37 DEEP
BELOW SLOT

10 1/4



P-

ENGR
A.C. BECK
DRAWN
S.J. BENNETT

11-15-63

ISSUE 1

USED ON

DWG

HOLDER

SCALE 1/1

WESTERN ELECTRIC CO. INC.
ENGINEER OF MANUFACTURE
CENTRAL OFFICE EQUIPMENT

BELL TELEPHONE
LABORATORIES
INCORPORATED

B-608254

C
D
S

P-

MATERIAL

FINISH

BRASS

UNLESS OTHERWISE SPECIFIED, ALL DIMENSIONS ARE IN INCHES. NONLIMITED DIMENSIONS
OTHER THAN SIZE OF RAW MATERIAL SHALL BE HELD AS FOLLOWS WHEN EXPRESSED:

TO 2 DECIMAL PLACES ± .01

AS ANGLES ±

TO 3 DECIMAL PLACES ± .003

FOR GENERAL INFORMATION ON SYMBOLS AND NOTES REFER TO MANUFACTURING
STANDARD 16.003, PART 2, SECTION 227.

DWG SIZE

1S

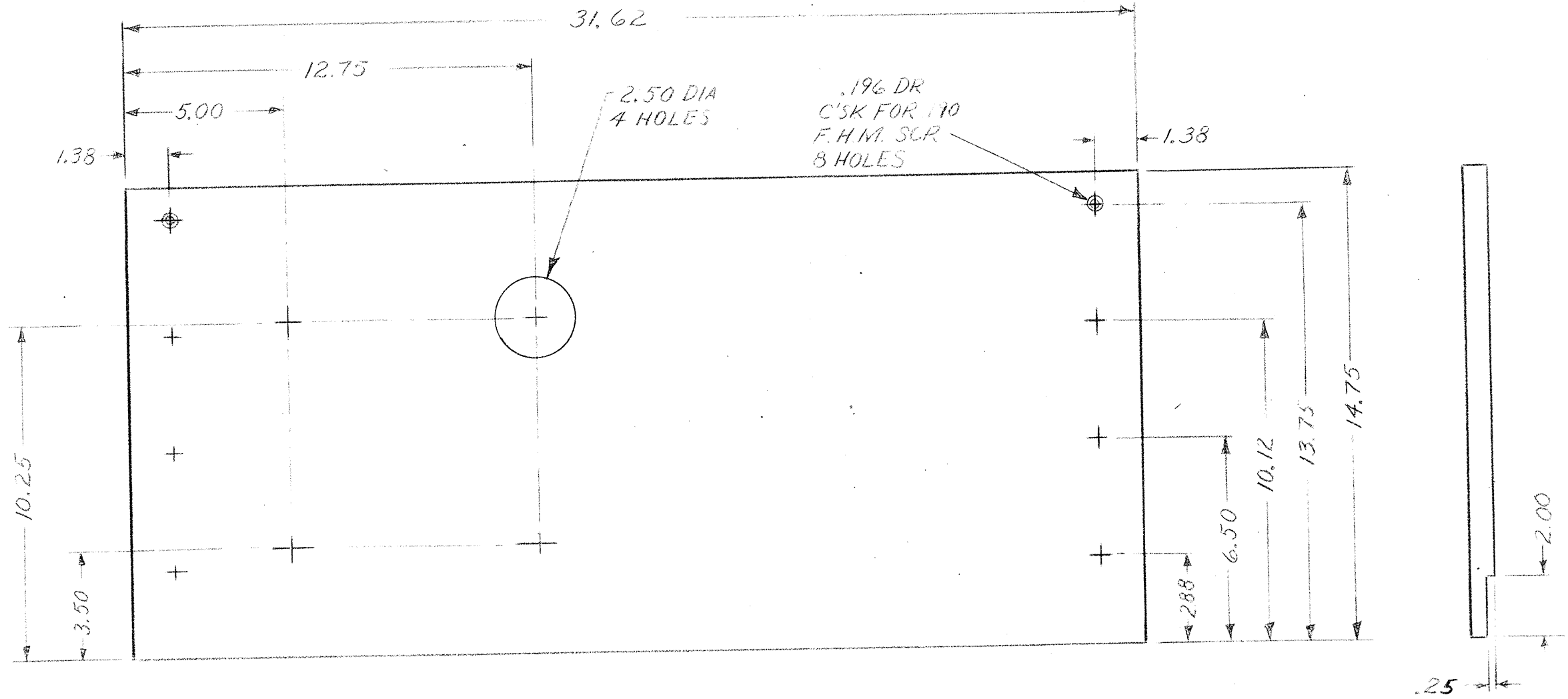
57011

K&E HERCULENE 163
DRAFTING PENA

1 B-608255 ISSUE

P-

ENGR A.C. BECK
DRAWN S.J. BENNETT
11-15-63 ISSUE 1



NOTE:
PART NO. B-608255-1, AS SHOWN;
PART NO. B-608255-2, OPPOSITE HAND.

USED ON DWG

SIDE,
MOTOR BOX

SCALE 1/4

WESTERN ELECTRIC CO. INC.
ENGINEER OF MANUFACTURE
CENTRAL OFFICE EQUIPMENT

BELL TELEPHONE
LABORATORIES
INCORPORATED

CDS B-608255
P-

MATERIAL	FINISH
3/4" PLYWOOD	

UNLESS OTHERWISE SPECIFIED, ALL DIMENSIONS ARE IN INCHES. NONLIMITED DIMENSIONS OTHER THAN SIZE OF RAW MATERIAL SHALL BE HELD AS FOLLOWS WHEN EXPRESSED:
TO 2 DECIMAL PLACES ± AS ANGLES ±
TO 3 DECIMAL PLACES ±
FOR GENERAL INFORMATION ON SYMBOLS AND NOTES REFER TO MANUFACTURING STANDARD 16.003, PART 2, SECTION 227.

DWG SIZE
2S

P-

10 1/4

15 5/8

HERCULENE® 56999
DRAFTING FILM

ISSUE 1 B-608256

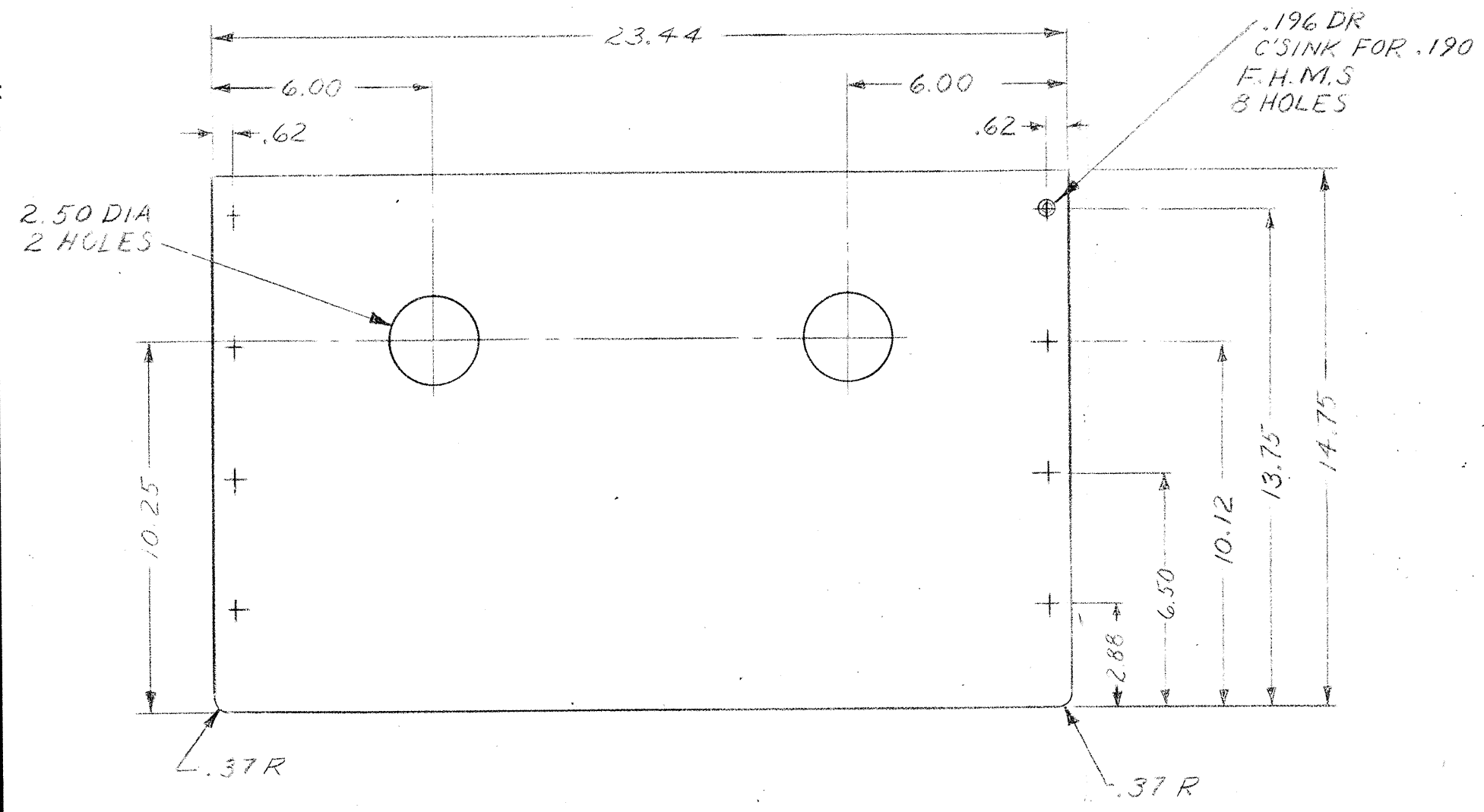
P-

ENGR A.G. BECK	
DRAWN S.J. BENNETT	
11-15-63	ISSUE 1

P-

10 1/4

15 5/8



USED ON	DWG
---------	-----

END MOTOR BOX

SCALE 1/4

WESTERN ELECTRIC CO. INC. ENGINEER OF MANUFACTURE CENTRAL OFFICE EQUIPMENT

BELL TELEPHONE LABORATORIES INCORPORATED

C	B-608256
D	
S	P-
P-	

MATERIAL	FINISH
3/4" PLYWOOD	

UNLESS OTHERWISE SPECIFIED, ALL DIMENSIONS ARE IN INCHES. NONLIMITED DIMENSIONS OTHER THAN SIZE OF RAW MATERIAL SHALL BE HELD AS FOLLOWS WHEN EXPRESSED:

TO 2 DECIMAL PLACES ± AS ANGLES ±

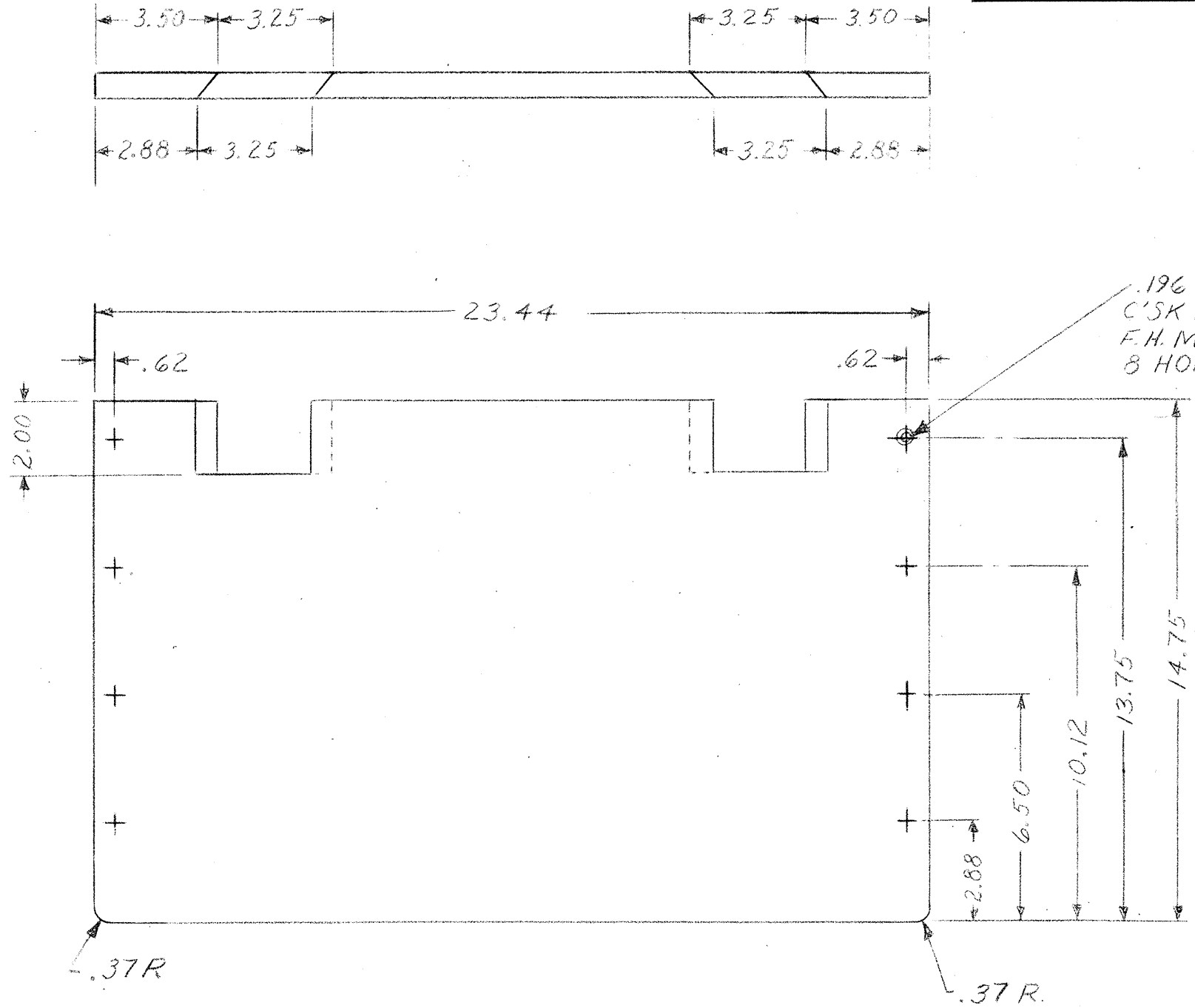
TO 3 DECIMAL PLACES ±

FOR GENERAL INFORMATION ON SYMBOLS AND NOTES REFER TO MANUFACTURING STANDARD 16.003, PART 2, SECTION 227.

DWG SIZE 2S

1 B-608257
ISSUE

P-	
ENGR A.C. BECK	
DRAWN S.J. BENNETT	
11-15-63	ISSUE 1



.196 DR
C'SK FOR .190
F.H.M.S.
8 HOLES

USED ON	DWG

END,
MOTOR BOX

SCALE 1/4

WESTERN ELECTRIC CO. INC.
ENGINEER OF MANUFACTURE
CENTRAL OFFICE EQUIPMENT

BELL TELEPHONE
LABORATORIES
INCORPORATED

CDS
P-
B-608257

MATERIAL	FINISH
3/4" PLYWOOD	

UNLESS OTHERWISE SPECIFIED, ALL DIMENSIONS ARE IN INCHES. NONLIMITED DIMENSIONS OTHER THAN SIZE OF RAW MATERIAL SHALL BE HELD AS FOLLOWS WHEN EXPRESSED:

TO 2 DECIMAL PLACES ± AS ANGLES ±

TO 3 DECIMAL PLACES ±

FOR GENERAL INFORMATION ON SYMBOLS AND NOTES REFER TO MANUFACTURING STANDARD 16.003, PART 2, SECTION 227.

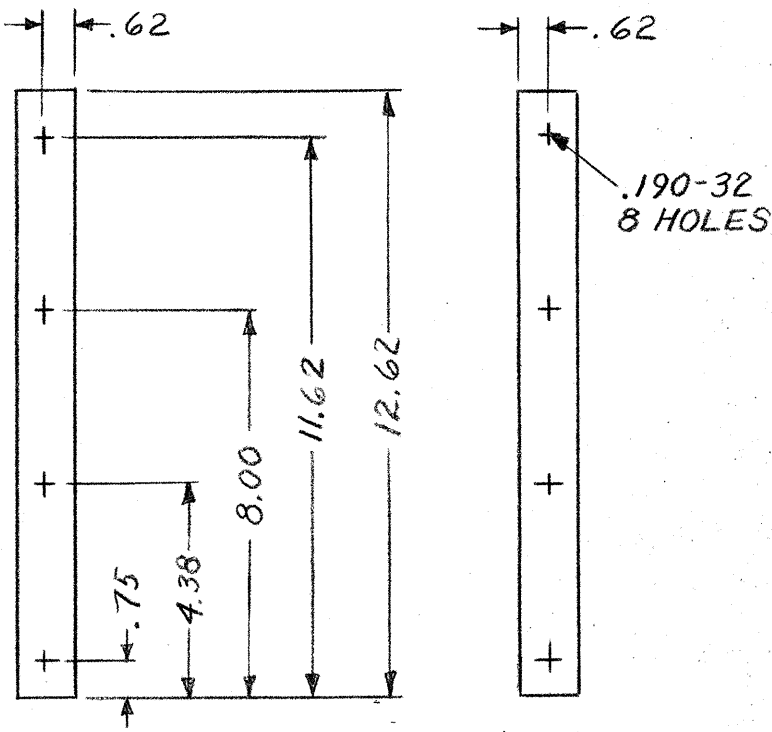
DWG SIZE
2S

P-
10 1/4

HERCULENE
56999
DRAFTING FILM

7 1/8

10 1/4



P-

ENGR
A. C. BECK
DRAWN
S. J. BENNETT

11-15-63 ISSUE 1

USED ON DWG

CORNER ANGLE

SCALE 1/4

WESTERN ELECTRIC CO. INC.
ENGINEER OF MANUFACTURE
CENTRAL OFFICE EQUIPMENT

BELL TELEPHONE
LABORATORIES
INCORPORATED

C B-608258
D
S P-

MATERIAL

FINISH

1 1/4 x 1 1/4 x 1/8
ALUMINUM ANGLE

UNLESS OTHERWISE SPECIFIED, ALL DIMENSIONS ARE IN INCHES. NONLIMITED DIMENSIONS OTHER THAN SIZE OF RAW MATERIAL SHALL BE HELD AS FOLLOWS WHEN EXPRESSED:

TO 2 DECIMAL PLACES ± .01

AS ANGLES ±

TO 3 DECIMAL PLACES ± .003

FOR GENERAL INFORMATION ON SYMBOLS AND NOTES REFER TO MANUFACTURING STANDARD 16,003, PART 2, SECTION 227.

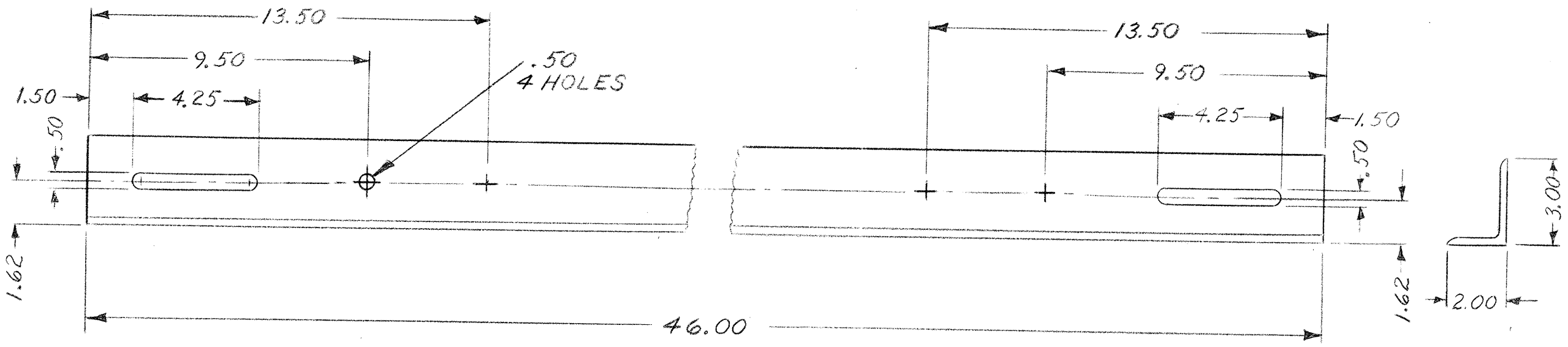
DWG SIZE

1S

HERCULENE 163 87011
DRAWING FILM

ISSUE 1
B-608259

P-		
ENGR		
A.C. BECK		
DRAWN		
S.J. BENNETT		
11-16-63	ISSUE 1	



USED ON	DWG

MOUNTING
ANGLE

SCALE 1/4

WESTERN ELECTRIC CO. INC.
ENGINEER OF MANUFACTURE
CENTRAL OFFICE EQUIPMENT

BELL TELEPHONE
LABORATORIES
INCORPORATED

MATERIAL	FINISH
3x2x1/4 ALUMINUM ANGLE	
UNLESS OTHERWISE SPECIFIED, ALL DIMENSIONS ARE IN INCHES. NONLIMITED DIMENSIONS OTHER THAN SIZE OF RAW MATERIAL SHALL BE HELD AS FOLLOWS WHEN EXPRESSED:	
TO 2 DECIMAL PLACES ± .02	
TO 3 DECIMAL PLACES ± .003	
AS ANGLES ±	
FOR GENERAL INFORMATION ON SYMBOLS AND NOTES REFER TO MANUFACTURING STANDARD 16.003, PART 2, SECTION 227.	
DWG SIZE	2S

C
D
S
P-
B-608259

P-

20

BOOK FOLD 2

LOOSE PRINT FOLD 1

BOOK FOLD 3

P-

ENGR	A. C. BECK
DRAWN	S. J. BENNETT
DATE	11-15-63
ISSUE	1

BOOK FOLD TRIM LINE

BOOK FOLD TRIM LINE

16

3/4 PLYWOOD - 25.75 x 32.37

RIM-REDWOOD, 3/4 THK.

2.00

6.87

6.18

3.62

2.94

6.87

6.18

3.62

2.94

31.68 INSIDE

2.75

25.00 INSIDE

BOOK FOLD 1

LOOSE PRINT FOLD 2

ISSUE 1 B-608260

USED ON	DWG
---------	-----

LID, MOTOR BOX

SCALE 1-4

WESTERN ELECTRIC CO. INC.
ENGINEER OF MANUFACTURE
CENTRAL OFFICE EQUIPMENT

BELL TELEPHONE
LABORATORIES
INCORPORATED

C
D
S
P-
B-608260

MATERIAL
AS NOTED

FINISH

UNLESS OTHERWISE SPECIFIED, ALL DIMENSIONS ARE IN INCHES. NONLIMITED DIMENSIONS OTHER THAN SIZE OF RAW MATERIAL SHALL BE HELD AS FOLLOWS WHEN EXPRESSED:

TO 2 DECIMAL PLACES ± .02 AS ANGLES ±

TO 3 DECIMAL PLACES ±

FOR GENERAL INFORMATION ON SYMBOLS AND NOTES REFER TO MANUFACTURING STANDARD 16,003, PART 2, SECTION 227.

DWG SIZE
3S

MEGACULINE 103 86083

31 1/2

BOOK FOLD 2

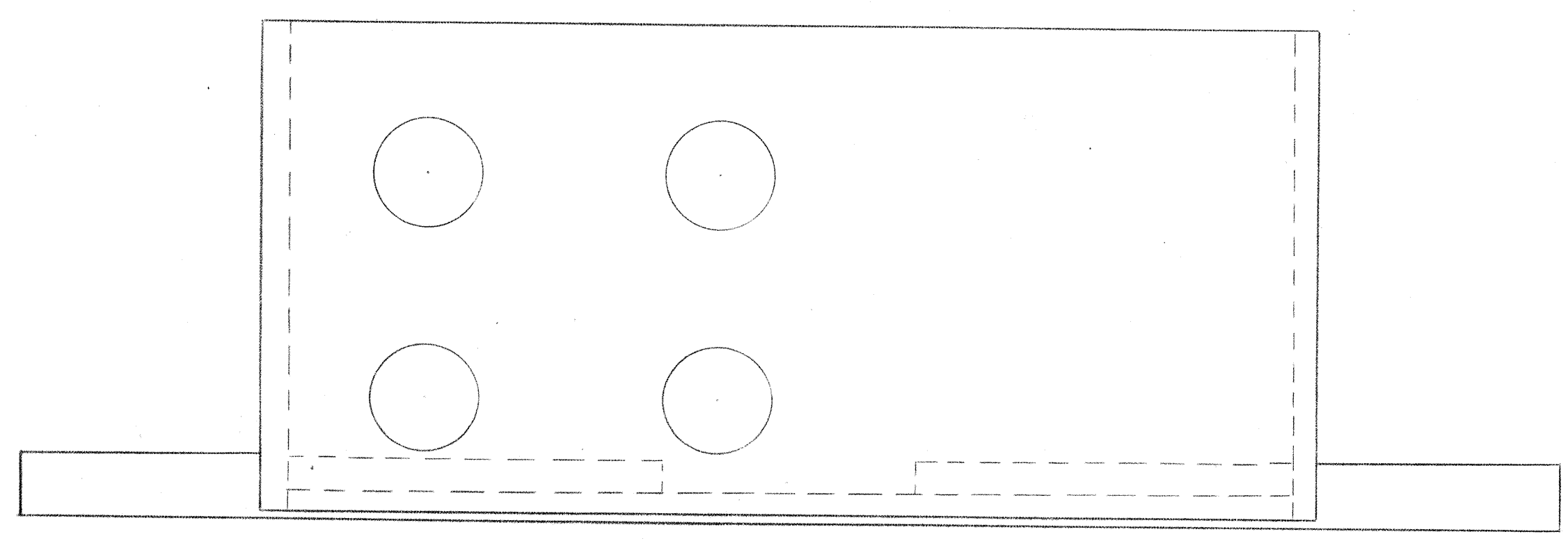
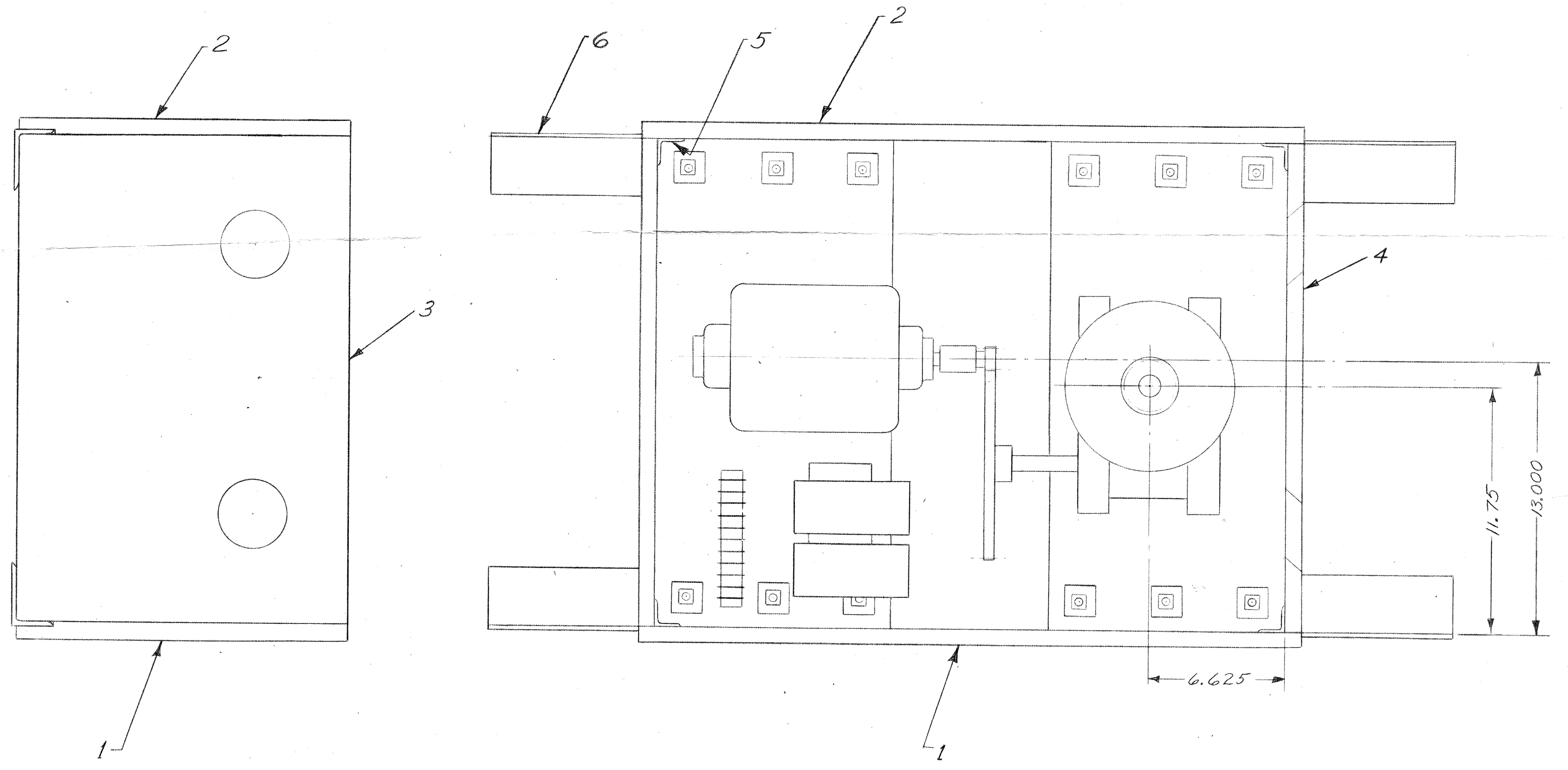
BOOK FOLD 3

BOOK FOLD 4

BOOK FOLD 5

P-

ENGR	
DRAWN	
ISSUE	



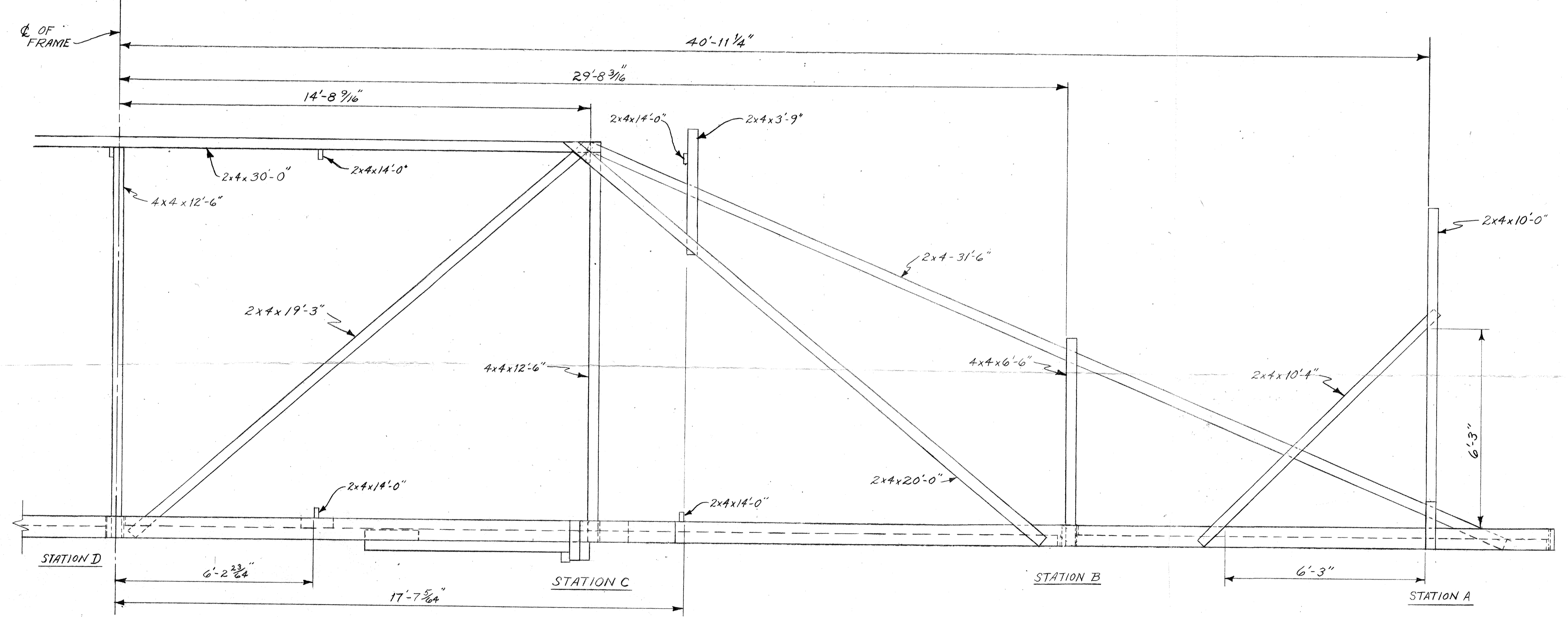
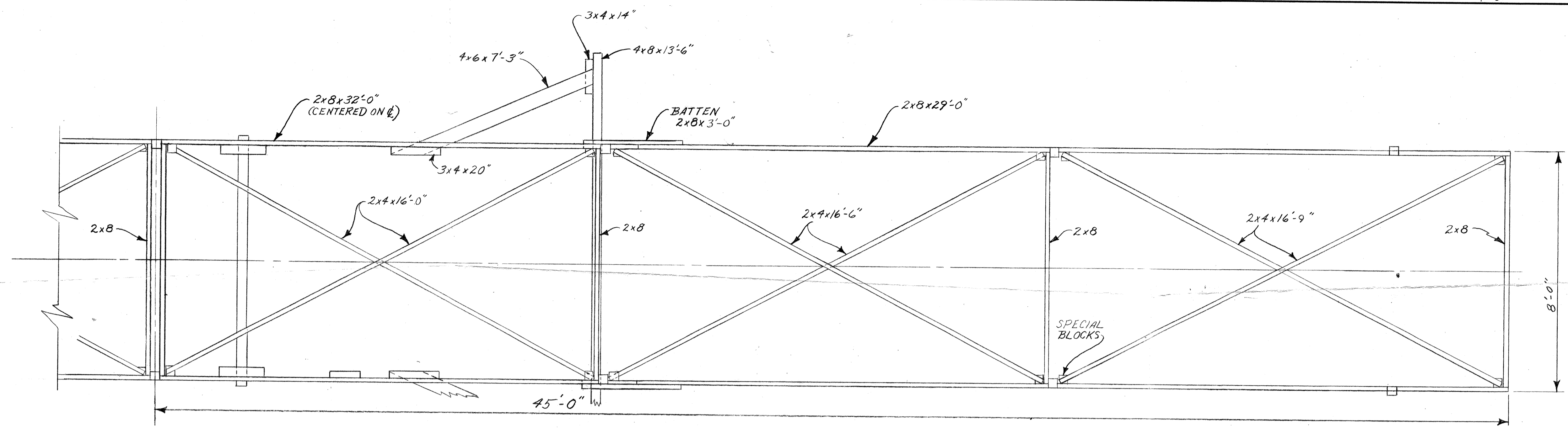
ITEM	PIECE	NAME	REQ
6	B-608259	MOUNTING ANGLE	2
5	B-608258	CORNER ANGLE	4
4	B-608257	END, MOTOR BOX	1
3	B-608256	END, MOTOR BOX	1
2	B-608255-2	SIDE, MOTOR BOX	1
1	B-608255-1	SIDE, MOTOR BOX	1

UNLESS OTHERWISE SPECIFIED, ALL DIMENSIONS ARE IN INCHES. NONLIMITED DIMENSIONS OTHER THAN SIZE OF RAW MATERIAL SHALL BE HELD AS FOLLOWS WHEN EXPRESSED:
 TO 2 DECIMAL PLACES ±
 TO 3 DECIMAL PLACES ±
 AS ANGLES ±

FOR GENERAL INFORMATION ON SYMBOLS AND NOTES REFER TO MANUFACTURING STANDARD 18,003, PART 2, SECTION 227. (THIS NOTE IS NOT APPLICABLE TO CENTRAL OFFICE EQUIPMENT.)

USED ON	DWG
MOTOR BOX, JANSKY ANTENNA	
SCALE 1/4	
WESTERN ELECTRIC CO. INC. ENGINEER OF MANUFACTURE CENTRAL OFFICE EQUIPMENT	
BELL TELEPHONE LABORATORIES INCORPORATED	
CDS	B-608261
SP-	

1 B-608261



NOTE:
 1. ONLY ONE HALF OF FRAME SHOWN.
 OTHER HALF SIMILAR.
 OVERALL LENGTH = 90'-0"
 2. LONGITUDINAL BRACING OMITTED ON
 TOP VIEW FOR CLARITY.

LOOSE PRINT FOLD 1

BOOK FOLD TRIM LINE

LOOSE PRINT FOLD 4

ISSUE I B-796291 SHEET 1 of 2

USED ON	DWG
---------	-----

BASIC FRAME

SCALE 1/2"=1'-0"

WESTERN ELECTRIC CO. INC.
ENGINEER OF MANUFACTURE
CENTRAL OFFICE EQUIPMENT

BELL TELEPHONE
LABORATORIES
INCORPORATED

B-796291

P- SHEET 1 of 2

MATERIAL	FINISH
UNLESS OTHERWISE SPECIFIED, ALL DIMENSIONS ARE IN INCHES. UNLIMITED DIMENSIONS OTHER THAN SIZE OF RAW MATERIAL SHALL BE HELD AS FOLLOWS WHEN EXPRESSED: TO 2 DECIMAL PLACES & AS ANGLES & TO 3 DECIMAL PLACES & FOR GENERAL INFORMATION ON SYMBOLS AND NOTES REFER TO MANUFACTURING STANDARD 18.003, PART 2, SECTION 227. (THIS NOTE IS NOT APPLICABLE TO CENTRAL OFFICE EQUIPMENT.)	
DWG SIZE	6S

P-
BOOK FOLD TRIM LINE

BOOK FOLD TRIM LINE

LOOSE PRINT FOLD 3

LOOSE PRINT FOLD 2

3 1/2

FOLD 2

FOLD 3

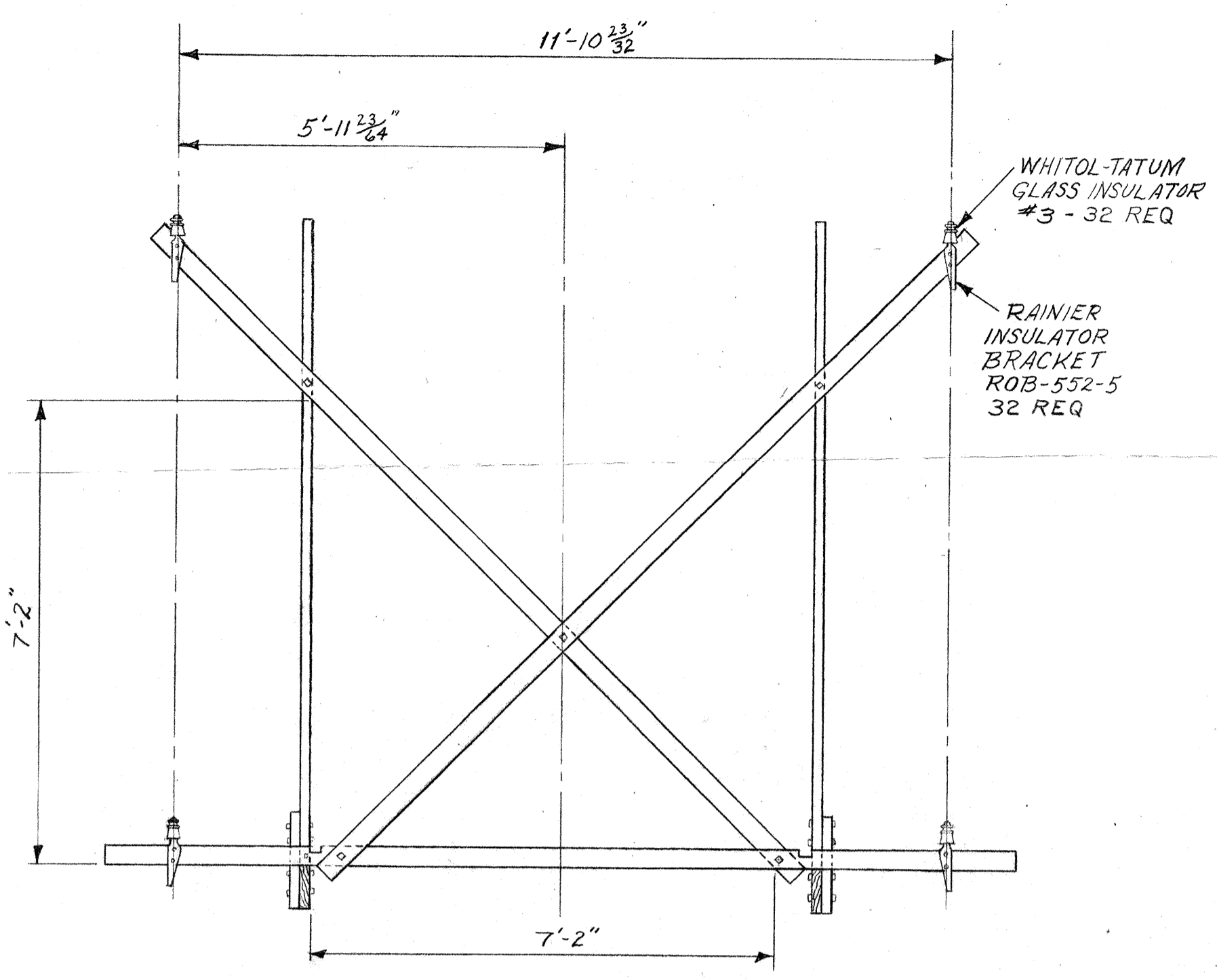
FOLD 4

FOLD 5

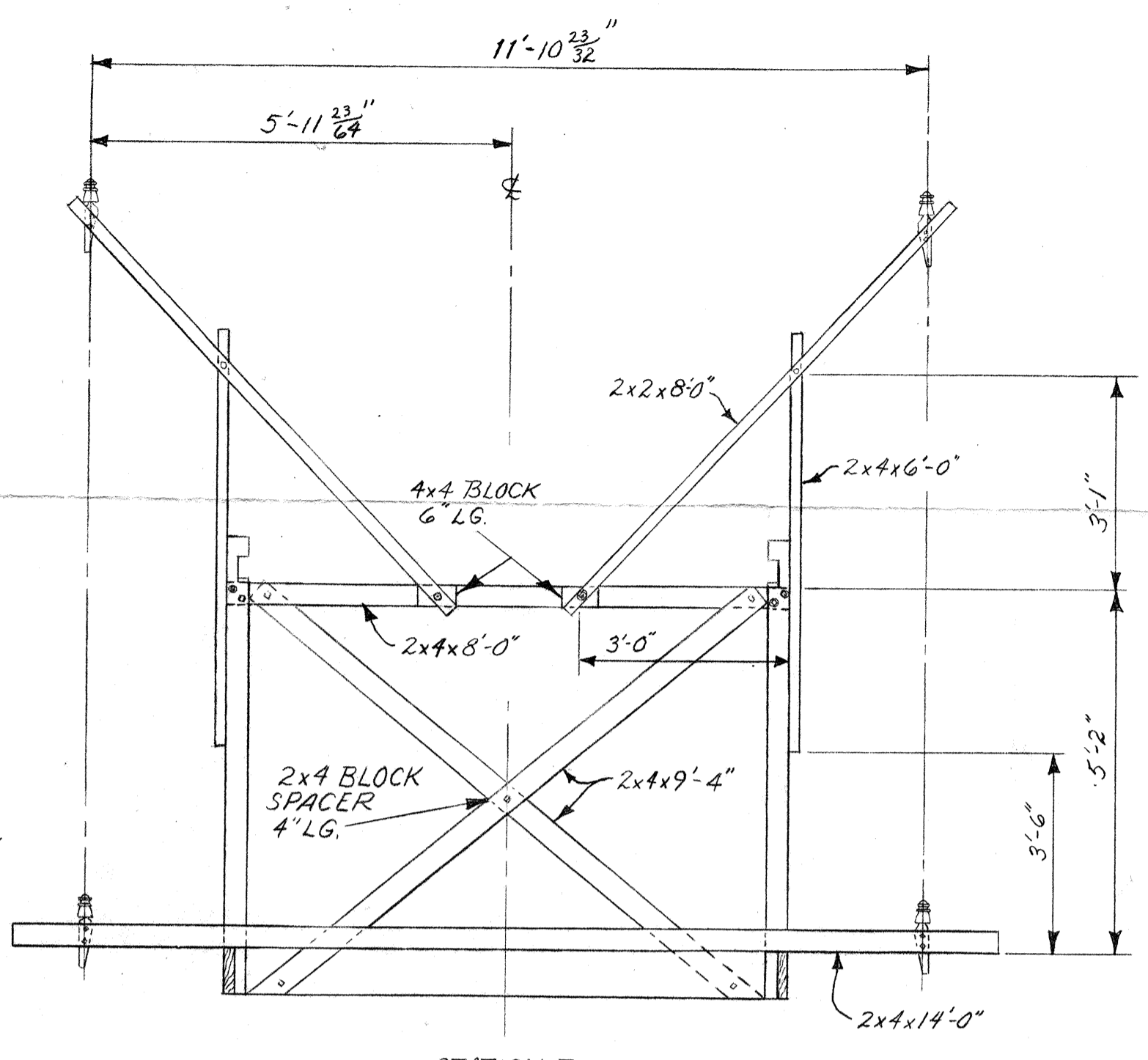
P-

P-

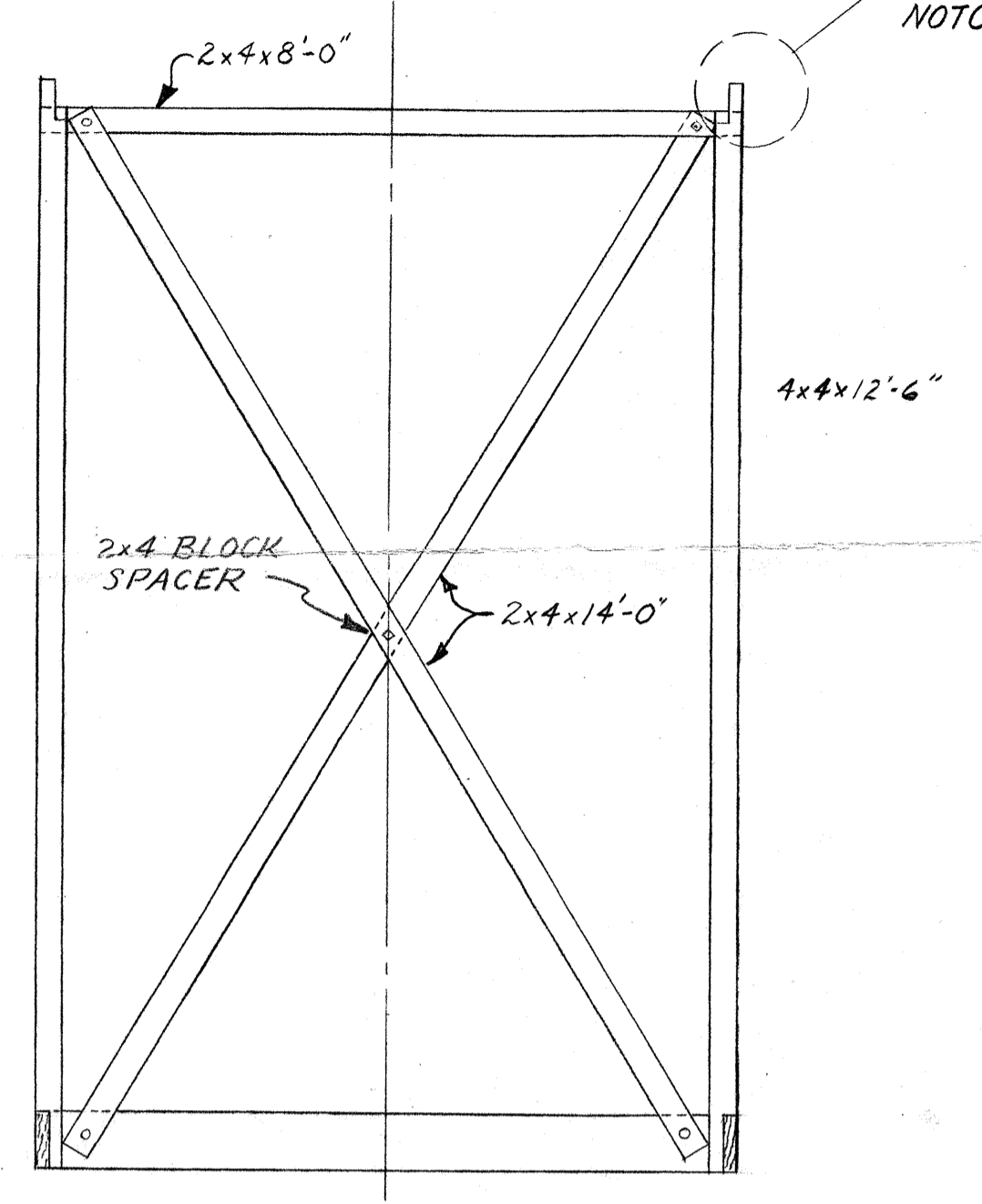
BY	J. E. BECK
CHKD	J. P. WINGETT
ISSUE	1 2-6-61



STATION A

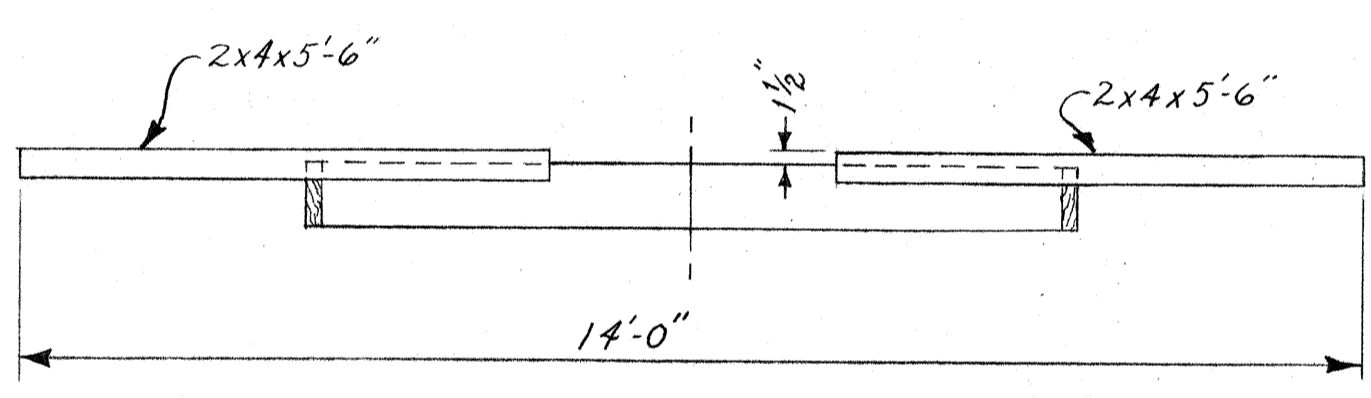


STATION B



STATION C

STATION D IS SIMILAR EXCEPT NOTCH AT TOP IS 3 3/4" DP STRAIGHT ACROSS



END VIEW

LOOSE PRINT FOLD 1

LOOSE PRINT FOLD 1

LOOSE PRINT FOLD 4

ISSUE 1 B-796291 SHEET 2 OF 2

USED ON	DWG
BASIC FRAME	

SCALE 1/2" = 1'-0"

WESTERN ELECTRIC CO. INC.
ENGINEER OF MANUFACTURE
CENTRAL OFFICE EQUIPMENT

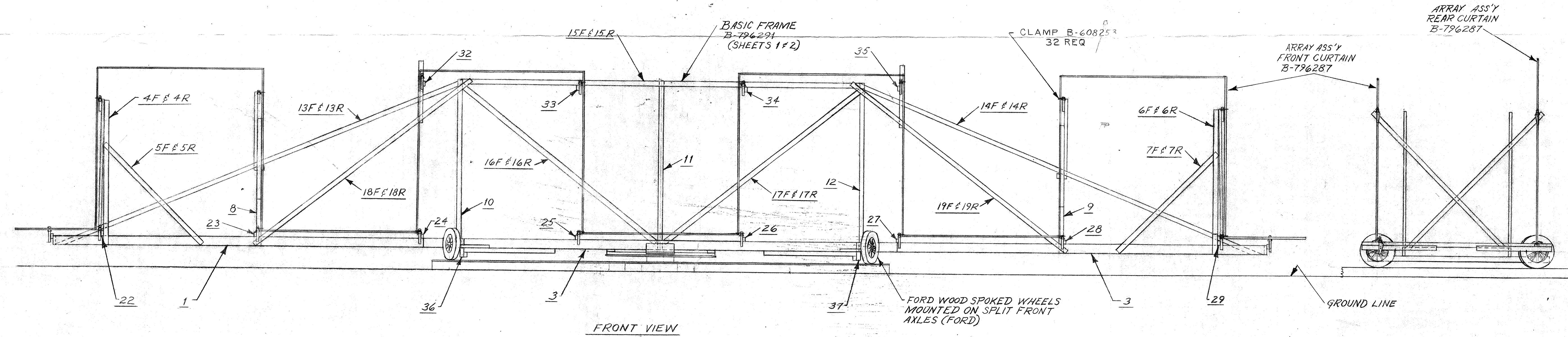
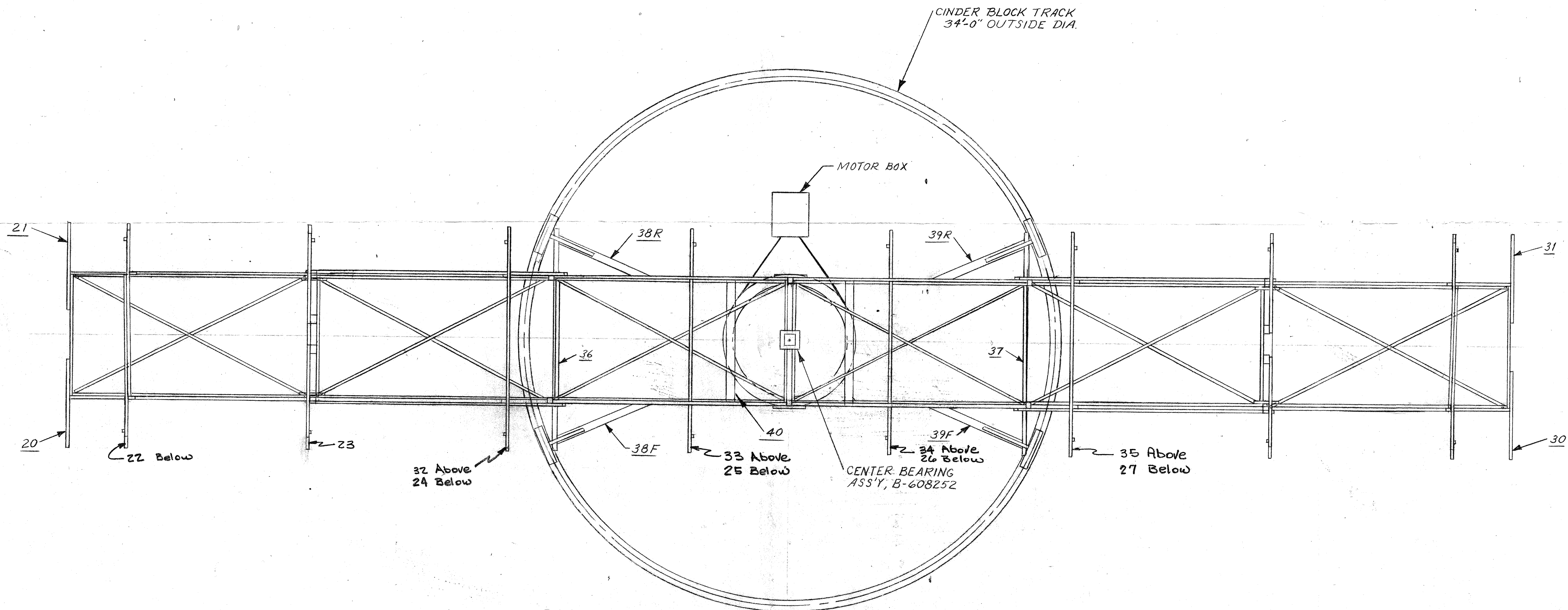
BELL TELEPHONE
LABORATORIES
INCORPORATED

B-796291
P- SHEET 2 OF 2

MATERIAL	FINISH
UNLESS OTHERWISE SPECIFIED, ALL DIMENSIONS ARE IN INCHES. NONLIMITED DIMENSIONS OTHER THAN SIZE OF RAW MATERIAL SHALL BE HELD AS FOLLOWS WHEN EXPRESSED: TO 2 DECIMAL PLACES ± AS ANGLES ± TO 3 DECIMAL PLACES ±	
FOR GENERAL INFORMATION ON SYMBOLS AND NOTES REFER TO MANUFACTURING STANDARD 16.005, PART 2, SECTION 227. (THIS NOTE IS NOT APPLICABLE TO CENTRAL OFFICE EQUIPMENT.)	

DWG SIZE
6S

- NOTES:
1. UNDERLINED NUMBERS ARE AS MARKED ON PIECES AND ARE FOR RE-ASSEMBLY PURPOSES ONLY.
 2. NUMBERS WITH SUFFIX F ARE USED ON FRONT OF FRAME. NUMBERS WITH SUFFIX R ARE SIMILAR PIECES USED ON REAR OF FRAME
 3. ON PIECES MARKED T AND AN ARROW, ARROW POINTS TOWARDS TOP OF PIECE.
 4. ON PIECES MARKED WITH SMALL F OR R WITH AN ARROW, ARROW POINTS TO FRONT OR REAR, RESPECTIVELY.



FRONT VIEW

ISSUE 1 B-799805

USED ON DWG

JANSKY ANTENNA TURNABLE ASS'Y

SCALE 1/4" = 1'-0"

WESTERN ELECTRIC CO. INC.
ENGINEER OF MANUFACTURE
CENTRAL OFFICE EQUIPMENT

BELL TELEPHONE LABORATORIES
INCORPORATED

B-799805

P-

MATERIAL FINISH

UNLESS OTHERWISE SPECIFIED, ALL DIMENSIONS ARE IN INCHES. UNLIMITED DIMENSIONS OTHER THAN SIZE OF RAW MATERIAL SHALL BE HELD AS FOLLOWS WHEN EXPRESSED:

TO 2 DECIMAL PLACES ± AS ANGLES ±

TO 3 DECIMAL PLACES ±

FOR GENERAL INFORMATION ON SYMBOLS AND NOTES REFER TO MANUFACTURING STANDARD 16.000, PART 2, SECTION 227. (THIS NOTE IS NOT APPLICABLE TO CENTRAL OFFICE EQUIPMENT.)

6S