

alt. 220 Dec -26°
clock correct.

B+450 V

Fil 7.4-

160mc

10-27-38

Time	ua	Time	ua	Time	ua
125p	101	151	104	216	137
24	99	52	105	17	138
27	98	53	107	18	141
28	97	54	109	19	143
29	97	55	110	20	145
30	96	56	111	21	145
31	95	57	112x	22	145
32	96	58	116	23	146
33	97	59	117	24	147
34	97	200	118	25	147
35	97	01	119	26	146
36	97	02	121	27	148
37	98	03	—	28	149
38	98	04	123	29	151
39	98	05	124	30	152
40	99	06	125	31	153
41	100	07	127	32	153x
42	101	08	129	33	155
43	101	09	131	34	155
44	102	10	132	35	155
45	101	11	133	36	158
46	102	12	—	37	160
47	102	13	135	38	—
48	102	14	136	39	162
49	103	15	136	40	163
50	103				

Weather clear + sunny

Time	ua	Time	ua	Time	ua
241	164	306	190x	331	116
42	165	07	—	32	117
43	166	08	193	33	117
44	168	09	—	34	118
45	169	10	—	35	—
46	169	11	—	36	—
47	169	12	—	37	—
48	170	13	—	38	—
49	171	14	—	39	122
50	172	15	101	40	—
51	173	16	—	41	—
52	175	17	—	42	—
53	176	18	103	43	122
54	177	19	—	44	123
55	178	20	106	45	—
56	180	21	—	46	—
57	181	22	111	47	—
58	183	23	112	48	—
59	—	24	113	49	127
3 00	—	25	112	50	128
01	—	26	112	51	128
02	—	27	113	52	—
03	—	28	—	53	—
04	—	29	—	54	129
05	187x	30	114	55	128

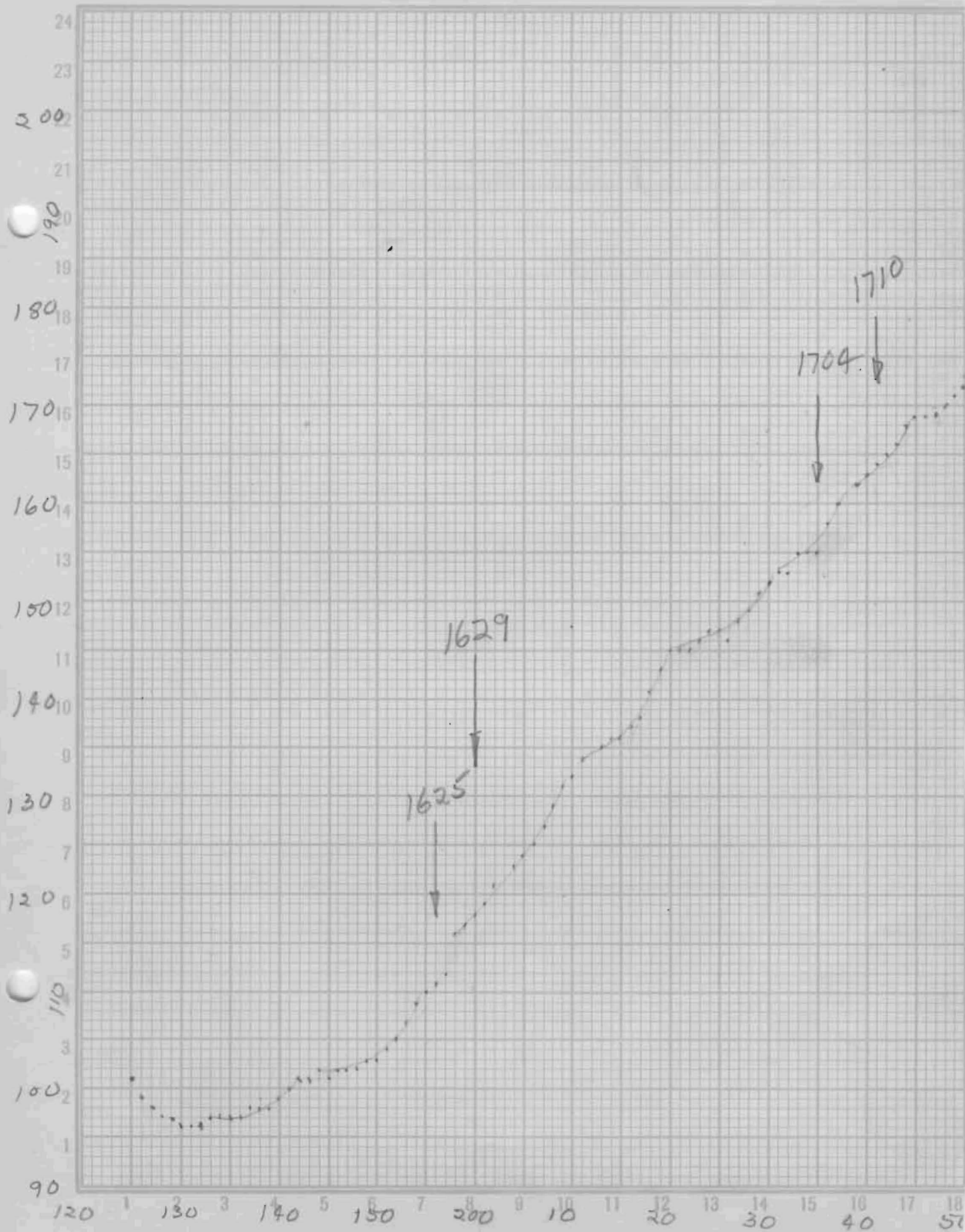
add 100

320 don't mean

Reading after much as blue voltage down

The real trouble was a carbon resistor overheated and lost resistance increasing current thru neon lamps.

10-27-38



10-27-38

