

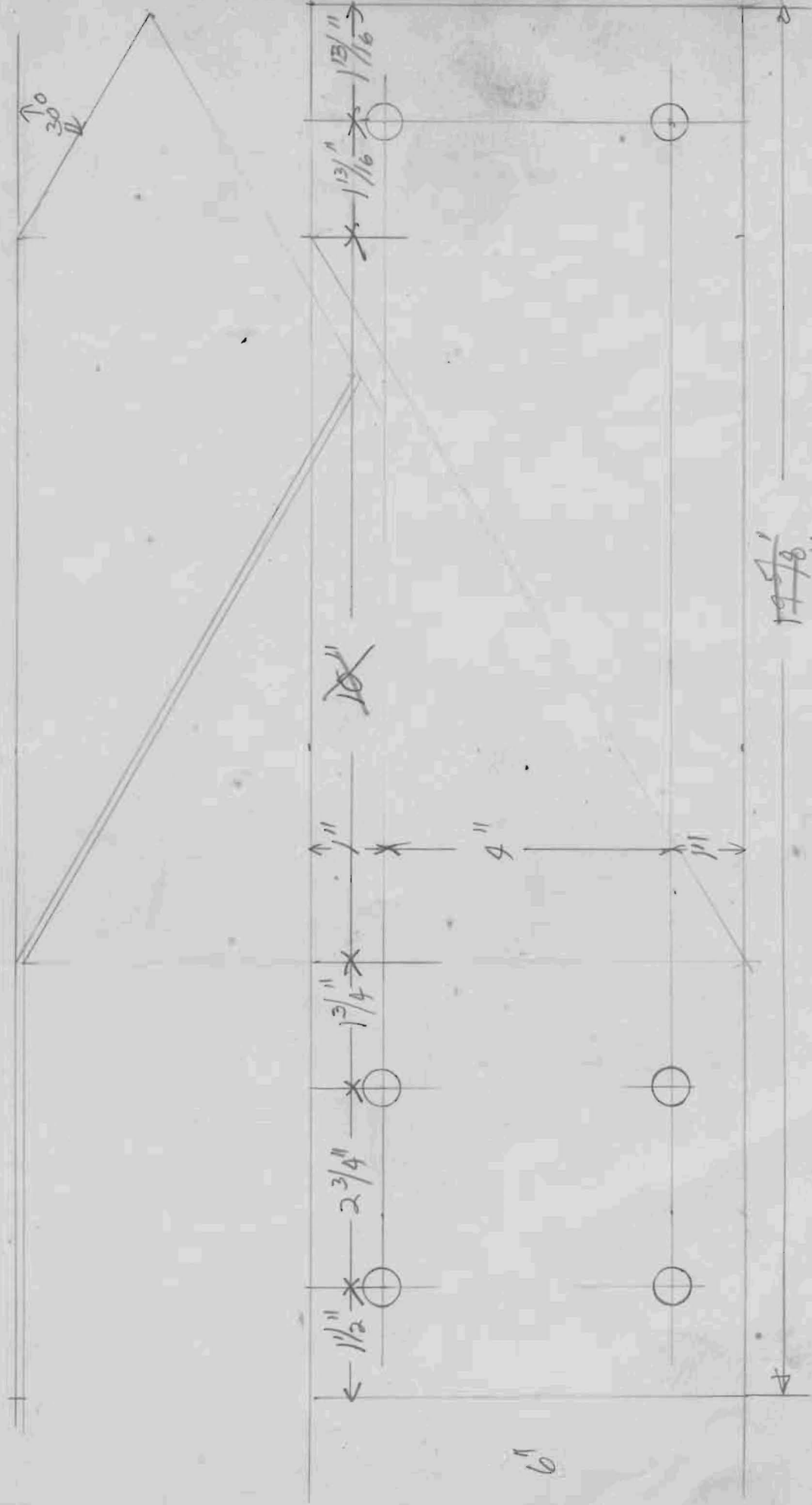
Type A

36 required

90 lbs total.



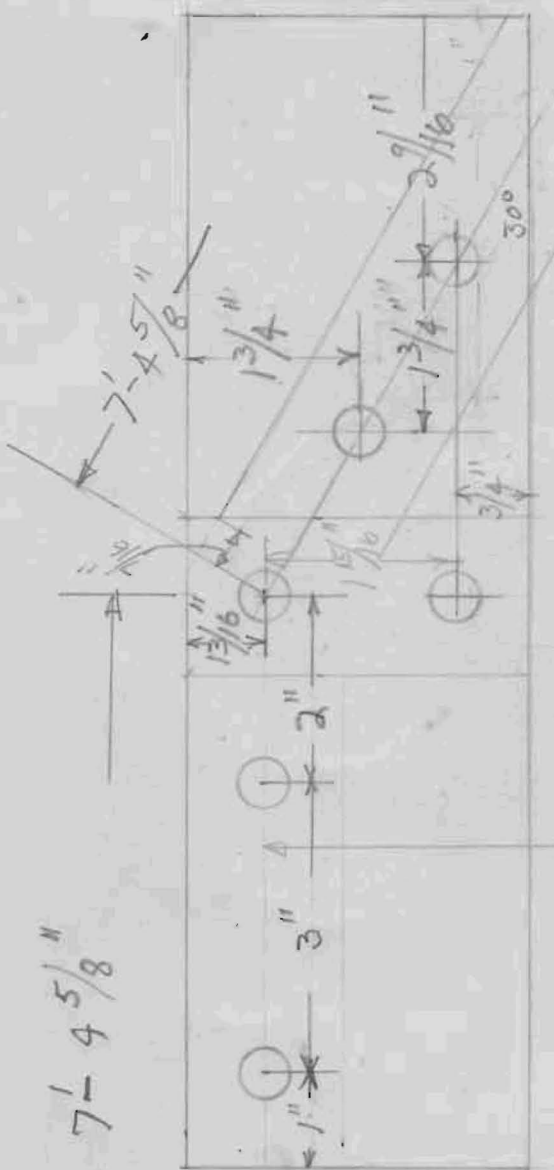
Type A' 8 required.
 37 lbs total



Type B

16 required
23 lbs.

3 1/2



12

square 20.177

To edge of

3'-8 5/16"

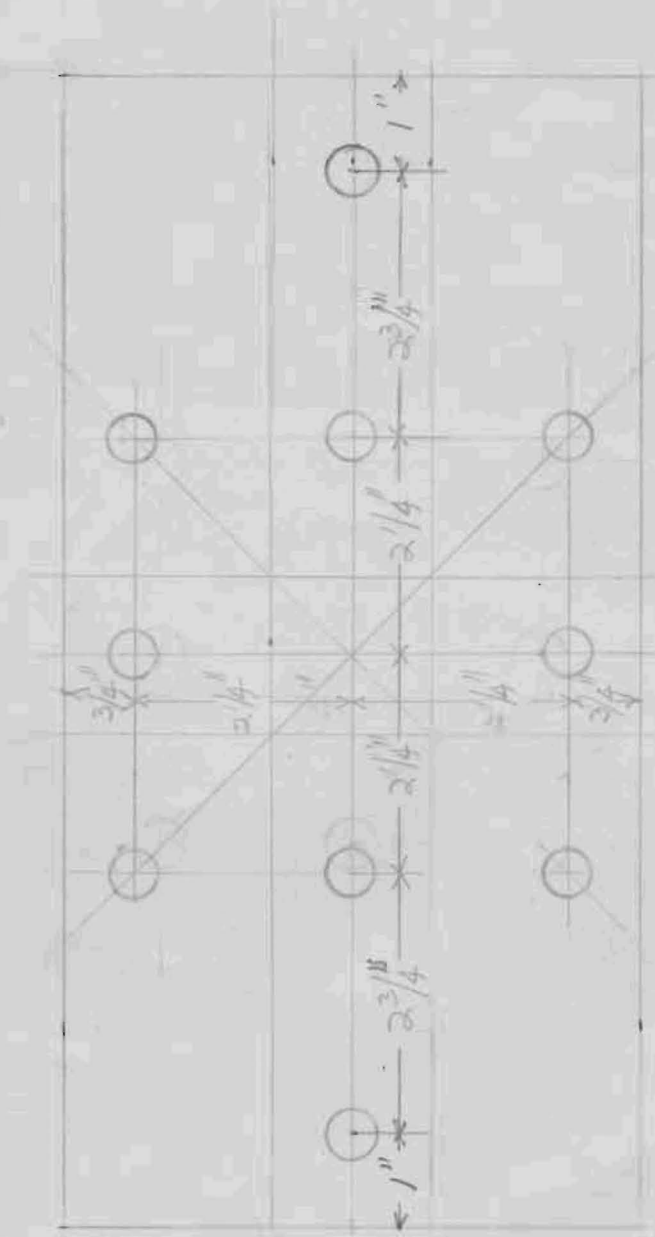
3.6926



$7\frac{1}{4}$ 4 5/8"

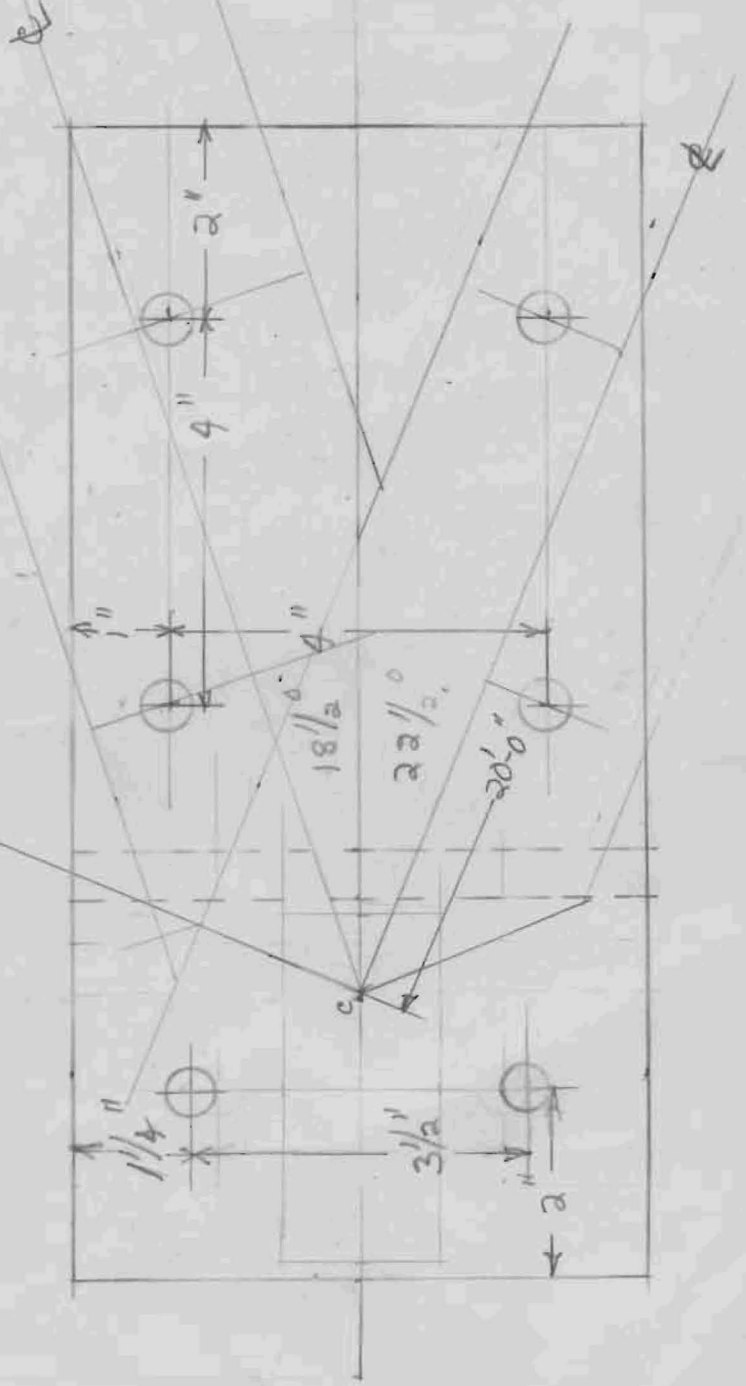
Type C

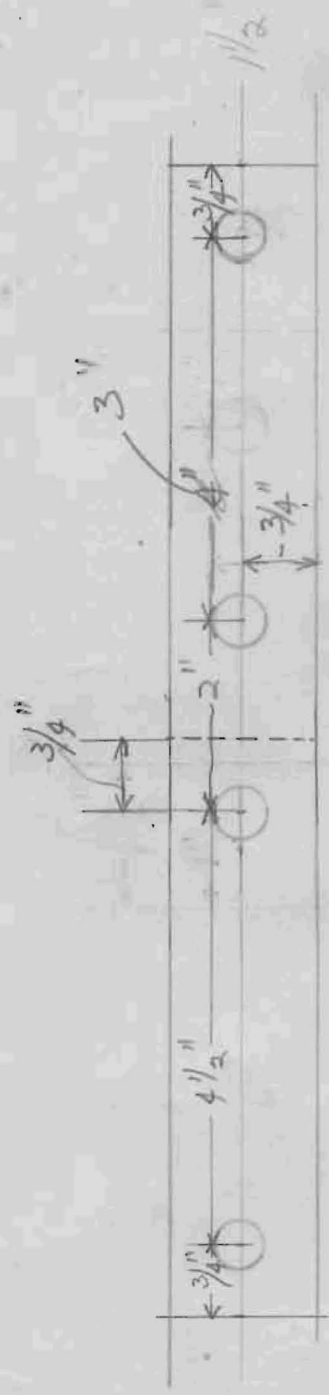
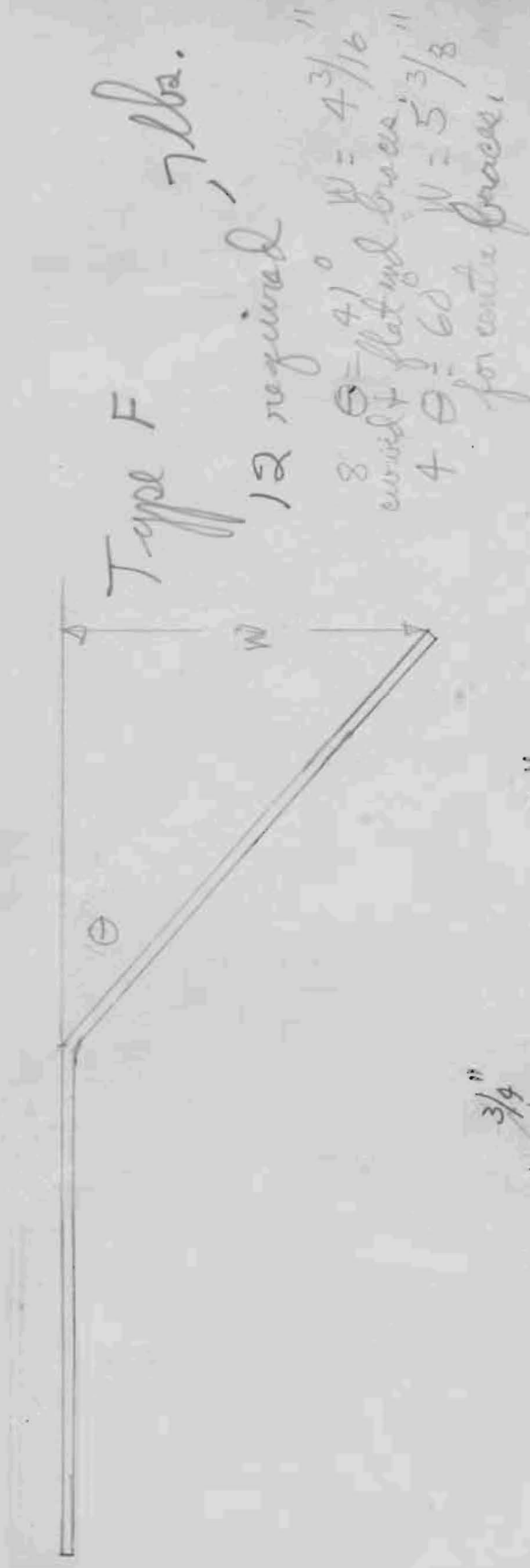
28 Required
69 the total.



Type D

8 required
20 lb.





~~11~~ 11

Type G

4 required.

8 lbs.

