

MORITOMO TRADING CO., LTD.

C. P. O. BOX 973

TOKYO, JAPAN

TOKYO. 23rd Dec., 1964.

PRICE LIST No. 101.

To The Japan Trade Centre, Melbourne.

For Porcelain Wire Holder.

Per Sample sent by sea sample post.

Terms Prices C.I.F. & F.O.B. in British sterling.

Subject to L/C.

Dear Sirs,

We are sending you new samples as per particulars stated below. Please endeavour to build up business with these samples for our mutual benefit and oblige.

(SUBJECT TO CHANGE WITHOUT NOTICE)

Qty. Sent	Sample No.	DESCRIPTION	SIZE	PRICE	PER	Quantity to Case	Meas. (Cu. Ft.)	Weight GROSS
			F.O.B. YOKOHAMA	C.I.F. MELBOURNE				
	Y-301	Porcelain Wire Holder with cement coated screw 2"x1-3/8" Chocolate colour	2d	2½d	pce.	600	3'-5"	89 Kilos
		<u>Packing:</u> 25 in a cardboard box and 600 pcs. to wooden case.						
	Y-304	Porcelain Wire Holder with cement coated screw 3" x 2" Chocolate colour	7½d	8½d	"	200	3'-4"	70
		If with metal slug imbedded screw 3"x2"	9d	10½d	"			

GR/PS

N.G.K. Insulators Limited,
1, 2-chome, Horita-dori,
Mizuho-ku,
NAGOYA,
Japan.

28th June, 1965.

Dear Sirs,

Enclosed is a drawing and specification of porcelain
auger insulator. Please quote price and delivery informa-
tion on 5,000, F.O.B. place of manufacture.

Yours faithfully,

Grote Reber.

encl.

Above letter also sent to the following :-

Australian Porcelain Sales & Trading Pty. Ltd.,
Box 8, YARRAVILLE, Victoria.

Southern Cross Porcelain Company Pty. Ltd.,
329-331 North Road, HUNTINGDALE, Victoria.

Morimoto Trading Co., Ltd.,
C.P.O. Box 973, TOKYO, Japan.

Osaka Togyo Kaisha Ltd.,
Osaka Building, Soze-cho, Kita-ku,
OSAKA, Japan.

Nilsen Porcelain (Aust.) Pty. Ltd.,
221 Separation Street, NORTHCOTE, Victoria.

Nippon Tokushu Togyo Kaisha Ltd.,
17, 1-chome, Horita-dori,
Mizuho-ku, NAGOYA, Japan.

CABLE ADDRESS:
"OBELISK" TOKYO

PHONE:
561-3025
3342

DIRECTORS:
T. FURUYA (MAN. DIRECTOR)
T. MOHRI (DIRECTOR)

Moritomo Trading Co., Ltd.

EXPORTERS, IMPORTERS & MANUFACTURERS

Ohyu Building, No. 14, Ni-Chome, Kayaba-Cho, Chuo-ku,

TOKYO JAPAN

CODE USED:
BENTLEY'S PHRASE CODE
UNIVERSAL TRADE CODE
SCHOFIELD'S 3-LETTER CODE
WITH IMPROVED SUPPLEMENT

TF/YT.

No. 1.

Tokyo, 7th July, 1965.

The Commonwealth Scientific and Industrial
Research Organization,
314 Albert Street,
East Melbourne, C.2,
Australia.



14 JUL 1965

Dear Sirs,

We have received your letter GR/PS dated 28th
June and specifications of Porcelain Auger Insulator
together with drawing and thank you for this enquiry.

We are at once studying the specifications and
expect to be able to quote our best price in due time.

Looking forward to your further enquiry,

Yours faithfully,
MORITOMO TRADING CO., LTD.

T. Furuya
Managing Director

Must have gotten address off envelope

MORITOMO TRADING CO., LTD.

C. P. O. BOX 973
TOKYO, JAPAN

TOKYO. 26th July, 1965

PRICE LIST No. 101.

To The C S I R O, Melbourne.
For Quotation of Porcelain Insulator.
Per _____
Terms Price F.O.B. Yokohama in E£.



Dear Sirs,

We are sending you new samples as per particulars stated below. Please endeavour to build up business with these samples for our mutual benefit and oblige.

(SUBJECT TO CHANGE WITHOUT NOTICE)

Qty. Sent	Sample No.	DESCRIPTION	SIZE	PRICE	PER	Quantity to Case	Meas. (Cu. Ft.)	Weight			
		<p><u>IN REPLY TO YOUR ENQ. DATED: 28TH JUNE, 1965</u></p> <p><u>"YAMAKI" Brand</u> Porcelain Auger Insulator with Galvanized steel auger</p> <p><u>Packing:</u> Each with wooden wool & 144 pcs. to a export wooden case.</p>									
			4" x 2"	-/9.95	pce.	144	2'6"	Net K. Grms 58 G/W 73			
		<p><u>"YAMAKI" Brand</u> Porcelain Auger Insulator with Galvanized steel auger</p> <p><u>Packing:</u> 4 pieces in a carton box - 36 cartons (144 pcs.) to export wooden case.</p>									
			4" x 2"	-/10 $\frac{3}{4}$	"	144	3'2"	Net 59.6 G/W 74.6			
		<p><u>SPECIFICATIONS:</u> As per your specifications and drawing.</p> <p><u>Delivery:</u> 60 days after accept of your order.</p> <p><u>Quantity:</u> 5,000 pieces.</p>									
		<p><i>E 9.95 x 1.25 5000 = A £ 259 + Mould</i></p> <p><i>240</i></p>									

CABLE ADDRESS:
"OBELISK" TOKYO

Moritomo Trading Co., Ltd.

PHONE:
561-3025
3342

DIRECTORS:
T. FURUYA (MAN. DIRECTOR)
T. MOHRI (DIRECTOR)

EXPORTERS, IMPORTERS & MANUFACTURERS

Ohyu Building, No. 14, Ni-Chome, Kayaba-Cho, Chuo-ku,

TOKYO JAPAN

CODE USED:
BENTLEY'S PHRASE CODE
UNIVERSAL TRADE CODE
SCHOFIELD'S 3-LETTER CODE
WITH IMPROVED SUPPLEMENT

TF/YT.

No. 2.

Tokyo, 26th July, 1965.

The C S I R O,
Melbourne.



30 JUL 1965

Dear Sirs,

Porcelain Auger Insulator


In response to your letter of 28th June enquiring for above insulator we are pleased to send you our quotation as per enclosed Price List No.101.

The price quoted is estimated according to your specifications and drawing. As the weight is not based on the actual porcelain insulator there may be some discrepancy, which you will please understand.

As for the samples we are now having a mould made, so actual samples will be sent by air as soon as they are ready. These samples will be ready about the middle of August.

In the meantime, we are,

Yours faithfully,
MORITOMO TRADING CO., LTD.



T. Furuya
Managing Director

Encl: 1 Price List.

CABLE ADDRESS:
"OBELISK" TOKYO

Moritomo Trading Co., Ltd.

EXPORTERS, IMPORTERS & MANUFACTURERS

Ohyu Building, No. 14, Ni-Chome, Kayaba-Cho, Chuo-ku,

TOKYO JAPAN

CODE USED:
BENTLEY'S PHRASE CODE
UNIVERSAL TRADE CODE
SCHOFIELD'S 3-LETTER CODE
WITH IMPROVED SUPPLEMENT

PHONE:
561-3025
3342

DIRECTORS:
T. FURUYA (MAN. DIRECTOR)
T. MOHRI (DIRECTOR)

No.

Tokyo, 3rd August, 1965.

Received 17th August,

Mr. Grote Reber,
C S I R O,
Melbourne.

Dear Sir,

We received a letter from Mr. Guy B. Gresford, secretary of your organization, according to which he could not trace the enquiry we had received from you. We therefore have today sent him a letter requesting him to hand our letter to you.

We also suspect that our price list which we enclosed with our letter No.2 dated 26th July might be astray, so we have also asked him to hand it to you.

We presume our quotation sent you is interesting to you, but wish to be informed of your reaction to it. As we stated in our previous letter we must have moulds made to prepare samples according to your drawing sent us. The moulds cost us £225 to 30-0-0. If you are not interested in our quotation we must give up making such moulds. We therefore request your early reply.

Yours faithfully,
MORITOMO TRADING CO., LTD.

T. Furuya
Managing Director

9th September, 1965.

Mr. T. Furuya,
Moritomo Trading Co.,
Ohyu Building,
No.14 Ni-Chome,
Kayaba-Cho, Chuo-ku,
JAPAN.

Ref: Your quotation 26 July 1965 and
letters 2nd and 3rd August.

Dear Mr. Furuya,

Please pardon this long delay in replying which is caused by some unfortunate circumstances. The C.S.I.R.O. has nearly a hundred establishments with a staff of several thousand people. It is important that any future correspondence be directed to me by name and sent to the address at top of this letter.

The insulators are one item of very many things which may be part of a large radio installation. The entire project is still in the design and development stage. No decision will be made until a lot of other things have been organized and entire cost determined.

The price you quote and service you propose is quite satisfactory. I am pleased with your letters. If it is decided to go ahead with the entire project, I will write to you in six or eight months and place a firm order for the insulators.

Thank you for your efforts on our behalf,

Yours faithfully,

Grote Reber.

GR:JEG



NEC AIR CARGO CONSOLIDATION

NOT NEGOTIABLE

AIRBILL

AIRBILL NUMBER 111288

TYO

Cable Address: NEXCOAIR TOKYO
Telex: TK 2610 NEXCOHO TOKYO

(AIR CONSIGNMENT NOTE)
ISSUED BY: **NIPPON EXPRESS CO., LTD.**
TOKYO, JAPAN

DESTINATION (AIRPORT OF)
MELBOURNE

CONSIGNEE TO: **MESSRS. THE COMMONWEALTH SCIENTIFIC AND INDUSTRIAL ORGANIZATION, 314 ALBERT STREET, EAST MELBOURNE, C.2, VICTORIA, AUSTRALIA.**

ALSO NOTIFY

NO. OF PACKAGES	METHOD OF PACKING	NATURE AND QUANTITY OF GOODS	MARKS AND NUMBERS	DIMENSIONS OR VOLUME	GROSS WEIGHT (SPECIFY KGS. or LBS.)
ONE (1) P ^c PKG.		SAMPLE OF : PORCELAIN INSULATORS 6 PCS.	ADD, PKG.#3104		2.0 KGS.
COUNTRY OF ORIGIN: JAPAN					

DOCUMENTS TO ACCOMPANY AIRBILL: COMMERCIAL INVOICE; CONSULAR INVOICE; CERTIFICATE OF ORIGIN; OTHER

SHIPPER'S DECLARED VALUE (Specify Currency) FOR CUSTOMS		FOR CARRIAGE		It is mutually agreed that the goods herein described are accepted in apparent good order (except as noted) for transportation as specified herein, subject to governing classifications and tariffs in effect as of the date hereof which are filed in accordance with law. Said classifications and tariffs, copies of which are available for inspection by the parties hereto, are hereby incorporated into and made part of this contract.	SHIPPER MUST INSERT ITEM NUMBER CHARGEABLE TO SELF
20-1-11STG. N.C.V.		\$7.00			

AIR CARRIAGE		DEPARTURE (AIRPORT OF)	TOKYO	(ADDRESS OF FIRST CARRIER)	CHARGEABLE WEIGHT SPECIFY KGS. OR LBS.	RATE CLASSIFICATION	RATES	PREPAID		CHARGEABLE TO CONSIGNEE		
1. TO	FIRST CARRIER									CURRENCY	AMOUNTS IN CURRENCIES AS CHARGED	AMOUNTS IN CURRENCY AT DESTINATION
1. TO	MEB	FIRST CARRIER	N.E.C.	2.0		\$2.82	\$5.64	1				
2. TO		CARRIER										
3. TO		CARRIER										
3a. TO		CARRIER										
4. VALUATION CHARGE FROM				TO								
5. VALUATION CHARGE FROM				TO								
6. INSURANCE	AMOUNT REQUESTED											
	SPECIFY CURRENCY											
If shipper has requested insurance as provided in Item 6, shipment is insured in the amount specified by the shipper (recovery is limited to actual loss). Insurance is payable to shipper unless another payee is designated in writing by the shipper.	7. ORIGIN											
	8.											
	9.											
	10.											
	11. TRANSIT											
	12. DESTINATION	"ALL DESTINATION CHARGES PAYABLE BY CONSIGNEE AT MELBOURNE"										
	13.											
	14.											
15.												
16. C.O.D. FEE							\$5.64					
17. SHIPPER'S C.O.D.												
SHIPPER'S C.O.D. IN WORDS								W2,031.-	TOTALS			

The Shipper certifies that the particulars on the face hereof are correct and agrees to the CONDITIONS CONTAINED HEREIN.

Carrier certifies above-described goods were received for carriage SUBJECT TO THE CONDITIONS CONTAINED HEREIN, the goods then being in apparent good order and condition except as noted hereon.

NAME OF SHIPPER **MORITOMO TRADING CO., LTD.**
 ADDRESS **TOKYO, JAPAN**
 EXECUTED ON **AUG. 31, 1965** AT **TOKYO**
 (Date) (Place)
 NAME AND ADDRESS OF ISSUING CARRIER'S AGENT **KINO (AY) NIPPON EXPRESS CO., LTD.**
 AIR & TOURIST BRANCH JAPAN
 SIGNATURE OF SHIPPER _____
 BY BROKER/AGENT _____ SIGNATURE OF ISSUING CARRIER OR ITS AGENT _____

COPIES 1, 2, AND 3 OF THIS AIRBILL ARE ORIGINALS AND HAVE THE SAME VALIDITY

Original 3 (For Shipper)

AIRBILL NUMBER 111288

NO. 65/145

30TH AUGUST, 1965

INVOICE of ONE (1) Packages, Containing SAMPLES

Shipped by MORITOMO TRADING CO., LTD. TOKYO, JAPAN.

From TOKYO, JAPAN to MELBOURNE, AUSTRALIA, Per " AIR CRAFT "

For account and risk of MESSRS. COMMONWEALTH SCIENTIFIC AND INDUSTRIAL ORGANIZATION,
314 ALBERT STREET, EAST MELBOURNE, C.2, VICTORIA, AUSTRALIA.

Terms :-

Marks & Nos. on Packages	Quantity & Description of Goods	per	@	Amounts
<p>- ADD -</p> <p>Pkg.#3104</p>	<p><u>SAMPLE OF PORCELAIN INSULATORS</u></p> <p>Pkg.#3104 -1 package cont'g 6 pcs. Porcelain insulators</p>			<p>£0-1-11stg</p> <p>=====</p> <p>-E. & O. E. -</p>
<p>MORITOMO TRADING CO., LTD.</p> <p>.....</p> <p>Managing Director</p>				

CABLE ADDRESS:
"OBELISK" TOKYO

PHONE:
561-3025
3342

DIRECTORS:
T. FURUYA (MAN. DIRECTOR)
T. MOHRI (DIRECTOR)

Moritomo Trading Co., Ltd.

EXPORTERS, IMPORTERS & MANUFACTURERS

Ohyu Building, No. 14, Ni-Chome, Kayaba-Cho, Chuo-ku,

TOKYO JAPAN

CODE USED:
BENTLEY'S PHRASE CODE
UNIVERSAL TRADE CODE
SCHOFIELD'S 3-LETTER CODE
WITH IMPROVED SUPPLEMENT

TF/YT.

No. 3.

Tokyo, 30th August, 1965.

Att. Mr. Grote Reber,

Messrs. Commonwealth Scientific & Industrial
Research Organization,
314 Albert Street,
East Melbourne, C.2, Vic.

Porcelain Auger Insulator


Dear Sirs,

We have sent you by air samples of the above article enquired for by your letter of 28th June. Upon receipt of the same please carefully study the same, and let us know if they have any unsatisfactory points.

As for the price and time of delivery you are referred to our Price List No.101 dated 26th July.

Awaiting your reply,

Yours faithfully,
MORITOMO TRADING CO., LTD.



T. Furuya
Managing Director

30/10/64

Small porcelain auger insulator 35 cc volume

Large (number 1) " " 98 cc "

Proposed sample $3\frac{1}{2}$ " high 95 cc "

These do not include screw.

Japanese Insulator Samples

13/9/65

Grams

Unbaked Porcelain	234.9	244.0
Baked Porcelain	229.2	229.8
Complete Insulator	276.8	275.7
On hand variety	288.9	complete
" " "	213.4	Porcelain only

The unbaked have two circular grooves in recess

The baked have two turn left hand spiral groove.

The augers are $\frac{3}{8}$ " O.D. with $\frac{1}{4}$ " I.D., $2\frac{3}{8}$ " beyond porcelain

Dimensions of finished insulators O.K.

Augers set in cement, not in lead as specified.

Japanese Insulator Samples

13/9/65

The augers were set in cement instead of lead. Holes $\frac{1}{4}$ " dia \times $2\frac{1}{2}$ " deep were drilled in planks. Grease was inserted in hole. The augers were screwed in $1\frac{3}{4}$ ", leaving a couple of threads still clear. When reverse torque applied to unscrew auger, the head of auger sheared the cement. Insulator then turned freely on auger. The cement was chipped out, auger removed and hole cleaned. The recess had same two turns left hand spiral groove as two baked porcelain. The cement was very poor as it crumbled in my hand.

Pure portland cement was then mixed to a paste and augers reset in recess using this paste. About ten days will be needed for this cement to harden and cure.

The two baked porcelains were then warmed and other augers were set in lead. The heads of augers were first turned to make good bond to lead. These augers had slightly larger core so $\frac{9}{32}$ " \times $2\frac{1}{2}$ " holes were made. Grease was inserted into hole. Augers were slightly loose in porcelain due to contraction of lead when solidifying. However after screwing into wood the lead jammed into recess in porcelain and augers became tight.

20/9/65

Holes $\frac{9}{32}$ " dia x $2\frac{1}{2}$ " deep were made in hard wood.

Grease inserted into hole. The two insulators with augers set in Portland cement were screwed 2" into hole which takes auger to base of thread. They were then turned out, Both augers were loose in cement. The cement was then gouged out and augers removed. This cement was also crumbly in hand but much less than original Japanese cement. Weights as follows.

	Grams.	
Baked porcelains	230.6	231.7
augers.	38.5	38.6

These porcelains are very similar in weight to the unbaked samples. There is slightly more porcelain in these than the onhand variety.

Reset augers in type metal	315.0	315.0 complete
Average weight of type metal in each	45.3	

When tested in $\frac{9}{32}$ " x $2\frac{1}{2}$ " holes the same thing happened as ones set in lead. The auger was slightly loose at start but jammed when run in tight.

XXXXXXXXXXXXXXXXXXXXXXXXXXXX

XXXXXXXXXXXXXXXXXXXXXXXXXXXXXXXXXXXXXXXXXXXXXXXXXXXXXXXXXXXXXXXXXXXX

Mr. T. Furuya,
Moritomo Trading Company,
C.P.O. Box 973,
TOKYO,
Japan.

Stowell Avenue,
Hobart,
Tasmania,
Australia.

21st September, 1965.

Dear Mr. Furuya,

The sample insulators and your letter of the 30th August both arrived on 10th September in good condition. They were promptly forwarded here by our office in Melbourne. Thank you very much.

The porcelain work is quite satisfactory, being of good quality, accurate dimensions and fine finish. Unfortunately the augers were fastened with a poor grade of cement which failed in test as follows.

A 9/32" diameter hole was drilled 2½" deep into hard wood. Soft grease was inserted into the hole. The augers were screwed 1½" into hole which leaves about two turns of auger thread outside hole. An attempt was then made to unscrew insulator. The head of auger broke loose from cement and turned freely inside recess. The insulators were then removed by splitting wood. The cement was very soft and could easily be gouged out of recess by a stout knife.

The heads of augers and inside of recess were well cleaned by scraping and brushing. The augers were then set into recess by 45 grams of type metal in each insulator. Two more augers were secured. These were set in same manner into finished porcelains. All four insulators were then tested as above, except the augers were screwed into holes the full two inches. Insulators were then removed by unscrewing. All four were found to be satisfactory.

Item 8 of our specification calls for "auger fastened into recess by metal".

In view of this deviation from specification and unsatisfactory cement used, please send two more finished samples with augers properly fastened so they cannot come loose.

We will eventually elect your first proposition of 144 pieces packed in wood wool in ~~an~~ export wooden cases.

Yours faithfully,

Grote Reber.

4/10/65

The four insulators were fitted with Copperweld wire 0.080" dia and twisted sleeves. These were tested up to 300 lb load. No creep was observed, all were satisfactory.

The grooves inside recess are about 0.10" wide and 0.1" deep. The recess is 0.8" dia. Two grooves have shear area of $2\pi \cdot 0.8 \cdot 0.1 = 0.5$ square inch. Shear stress was 600 lb/sq in. The compression stress was same. Handbooks give lead as 7000 lb/sq" tensile strength with 22% elongation. Apparently the safety factor is still around ten when 300 lb load applied to insulator.

at some future time tests to failure should be made. Probably the wire is weakest.

CABLE ADDRESS:
"OBELISK" TOKYO

PHONE:
561-3025
3342

DIRECTORS:
T. FURUYA (MAN. DIRECTOR)
T. MOHRI (DIRECTOR)

Moritomo Trading Co., Ltd.

EXPORTERS, IMPORTERS & MANUFACTURERS

Ohyu Building, No. 14, Ni-Chome, Kayaba-Cho, Chuo-ku,

TOKYO JAPAN

CODE USED:
BENTLEY'S PHRASE CODE
UNIVERSAL TRADE CODE
SCHOFIELD'S 3-LETTER CODE
WITH IMPROVED SUPPLEMENT

TF/YT.

No. 5.

Tokyo, 18th October, 1965.

Arrived 28/10/65 + sample

Mr. Grote Reber,
Stowell Avenue,
Hobart, Tasmania,
Australia.

Dear Mr. Rober,


We have received your letter of 21st September and thank you for your report on the result of your test of our samples of Porcelain Insulators. We have at once conveyed it the maker and instructed him to prepare 2 samples of metal imbedded Porcelain Insulators urgently. We will send them by air shortly.

Cement imbedding of Augers has not only such a weak point as you state but also has its durability lessened due to weathering during its use. Such being the case a certain American customer of us absolutely rejects cement - imbedded ones.

For your reference we have sent by a porcelain insulator, the same as those we shipped to the customer. We are shipping this and smaller-size ones every 3 months to our customers who are much satisfied with the same.

For the makers to use cement instead of metal is to lower their prices and there is no other reason. You will therefore please understand beforehand that the price is higher when cement is replaced by metal. We will inform you of the price at the same time as we send samples.

Yours faithfully,
MORITOMO TRADING CO., LTD.


T. Furuya
Managing Director

CABLE ADDRESS:
"OBELISK" TOKYO

Moritomo Trading Co., Ltd.

PHONE:
56.3025
3342

CODE USED:
BENTLEY'S PHRASE CODE
UNIVERSAL TRADE CODE
SCHOFIELD'S 3-LETTR CODE
WITH IMPROVED SUPPLEMENT

EXPORTERS, IMPORTERS & MANUFACTURERS
TOKYO BRANCH

HEAD OFFICE
YOKOHAMA

Ohyu Building, No. 14, Ni-Chome, Kayaba-Cho, Chuo-ku,

TOKYO JAPAN.

TF/YT.

No. 6.

6th November, 1965.


Mr. Grote Reber,
Hobart,
Tasmania.

Dear Sirs,

In accordance with your letter of 21st September we have sent by air two samples of Metal Imbedded Porcelain Auger Insulator, as per enclosed Price List No.102.

We presume the samples sent will be found satisfactory, but if you desire any improvement on the same please let us know, and then we will have samples made again to meet your requirements.

Yours faithfully,
MORITOMO TRADING CO., LTD.



T. Furuya
Managing Director

21st June, 1966.

Mr. N. G. Buckley,
Administrative Officer,
Division of Applied Mineralogy,
C.S.I.R.O.,
P.O. Box 4331,
MELBOURNE...VIC.

Dear Mr. Buckley,

I understand that Dr. Hosking of Building Research has mentioned to you our need to have two porcelain insulators fired, glazed and fired again, and he said that you had very kindly offered to have this done in your laboratory. Accordingly I have now packed and despatched these insulators to you.

The insulators were sent as samples by a Japanese manufacturer to our Dr. G. Reber, of Radiophysics. Dr. Reber wishes to test them for efficiency, material strength etc., and is unable to do so until they are fired. They will be for use in electronic experiments outdoors.

We would be most grateful if you can arrange this firing, and return to us. Any cost could be charged to the Tasmanian Regional Laboratory 2B3F(c).

Kind regards,

Yours sincerely,

M. H. Bennett,
Administrative Officer.

MHB:JEG

CSIRO

CHEMICAL RESEARCH LABORATORIES - DIVISION OF APPLIED MINERALOGY

P.O. BOX 4331, G.P.O., MELBOURNE, VIC. TELEPHONE 640251. TELEGRAMS CHEMRESEARCH MELBOURNE

6th July, 1966.

Mr. M. H. Bennett,
Administrative Officer,
Tasmanian Regional Laboratory,
C.S.I.R.O.,
Stowell Avenue,
HOBART, Tas.

Dear Mr. Bennett,

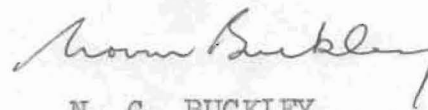
As arranged, we have fired and glazed the porcelain insulators for Dr. Reber of Radiophysics, and have despatched them to you.

The insulators were fired at 1340°C and given a normal iron glaze. To obtain the firing temperature, a core was taken from the base of each.

There will be no charge, just part of the service.

Kind regards,

Yours sincerely,



N. G. BUCKLEY,
Administrative Officer.

11th July, 1966.

The Administrative Officer,
(Mr. N.G. Buckley),
Division of Applied Mineralogy,
Chemical Research Laboratories,
C.S.I.R.O.,
Post Office Box 4331, G.P.O.,
MELBOURNE ... Vic.

Dear Mr. Buckley,

The porcelain insulators which your Division so kindly fired and glazed for Dr. Reber of Radiophysics have just arrived safely, and Dr. Reber has asked me to express his thanks and appreciation. He is very pleased with the result, and will now be able to proceed with tests and experiments which were waiting.

Thank you for your co-operation and very good service.

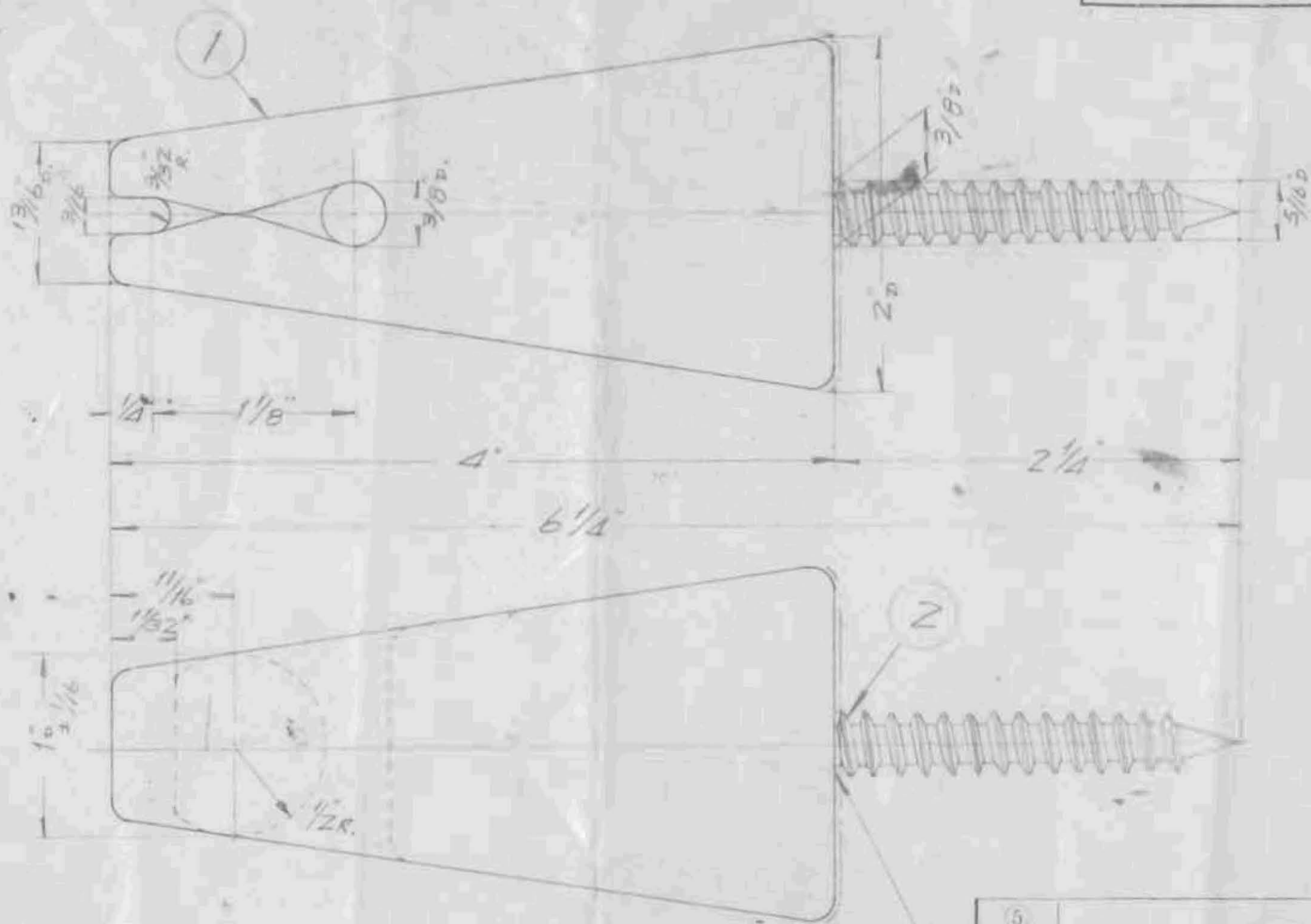
Yours sincerely,

M.H. Bennett,
Administrative Officer.

MHB/JCA

DRG. NO. 50693

(H)



CEMENTED

ITEM	MATERIAL	REQD.	REMARKS
5			
4			
3			
2	MILD STEEL	1	SP-10308
1	PORCELAIN	1	



NGK INSULATORS, LTD.

Nippon Gaiishi Kaisha, Ltd.
MIZUHO, NAGOYA, JAPAN

SCALE

1/1

DRN.

UNIT

INCH

CKD.

DATE

July 30 1945

APPD.

K. Kito

CAT. NO.

WIRE HOLDER

PORCELAIN : BROWN GLAZED EXCEPT SURFACES MARKED - - - - LEFT UNGLAZED.
FERROUS PARTS : HOT DIP GALVANIZED. EXCEPT FEMALE THREAD.

CHANGES

DRG.NO. 50693

(H)



CEMENTED

⑤			
④			
③			
②	MILD STEEL	1	M-10308
①	PORCELAIN	1	
ITEM	MATERIAL	REQD.	REMARKS



NGK INSULATORS, LTD.
Nippon Gaiishi Kaisha, Ltd.
MIZUHO, NAGOYA, JAPAN

SCALE	1/16"	DRN.	<i>[Signature]</i>
UNIT	INCH M.M.	CKD.	<i>[Signature]</i>
DATE	July 30 1915	APPD.	<i>N. Kito</i>

WIRE HOLDER

CAT.NO.

PORCELAIN : BROWN GLAZED EXCEPT SURFACES MARKED - - - - LEFT UNGLAZED.
FERROUS PARTS : HOT DIP GALVANIZED, EXCEPT FEMALE THREAD.

CHANGES

CHINA AND GLASS SPECIALISTS

R. M. HALL Pty. Ltd.

Merchants and Importers

TELEPHONE:
67 6868

CABLE ADDRESS:

"HALLCHINA," MELBOURNE

TELEGRAPHIC ADDRESS

"HALLCHINA," MELBOURNE

BMH:AH

Registered Office:

185-89 QUEEN STREET, MELBOURNE, C.1
VICTORIA, AUSTRALIA

12th October, 1965.
arrived on 14th,

C.S.I.R.O.,
Tasmanian Regional Laboratory,
Stowell Avenue,
HOBART. TAS.

Attention Mr. Grote Reber

Dear Sir,

Re: Auger Insulator

We have been forwarded by our Principals in Japan a copy of your letter addressed to; "Nippon Tokushu Togyo Kaisha Ltd." which was in turn forwarded to our Principals as they are Manufacturers of Porcelain Insulators. Our Principals' name and address ~~are~~ as follows;

"NGK Insulators Ltd.,
Morimura Buildings,
Toranomom Minato-Ku,
Tokyo. Japan".

In accordance with your request, we desire to submit our quotation for a quantity of -

5,000 pieces Porcelain auger insulators complete with pin cemented, brown glaze,
NGK Drg. No. 50693

at a price of U.S.\$.23 per piece.

<u>Packing Particulars:</u>	<u>G.W.</u>	<u>V.O.P.</u>
100 pcs. per case 4- cft.	95 lbs.	US\$.02 per pce.

Terms of payment are at sight draft against irrevocable Letter of Credit.

Time of Shipment is available ex works, Nagoya, Japan, four (4) months after receipt of order.

Our quotation holds good until the end of October, 1965.

...2/

12th October, 1965.

We attach two (2) copies of our Principals' Drawing No. 50693, and would be pleased to supply any further information you may require.

Assuring you of our best attention.

Yours faithfully,

R.M. HALL PTY. LTD.


Bruce M. Hall,
Director.

Enc.

GR:JKS

14th October, 1965.

R.M. Hall Pty. Ltd.,
185 Queen Street,
MELBOURNE C.1. VIC.

Dear Sirs,

Ref: Yours of 12/10/65 BMH:AH
Auger Insulator.

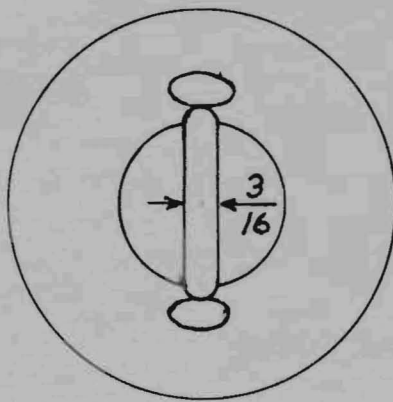
Past experience with cemented augers has been unsatisfactory. Item (8) of our specification calls for "Auger fastened into recess by metal". If your principals prefer cement it will be necessary for them to submit six sample insulators to us for test.

The price appears to be F.O.B. Nagoya. Please confirm or correct this. Also please explain the meaning of V.O.P. and charge of two cents. Is this paid in Japan or Australia?

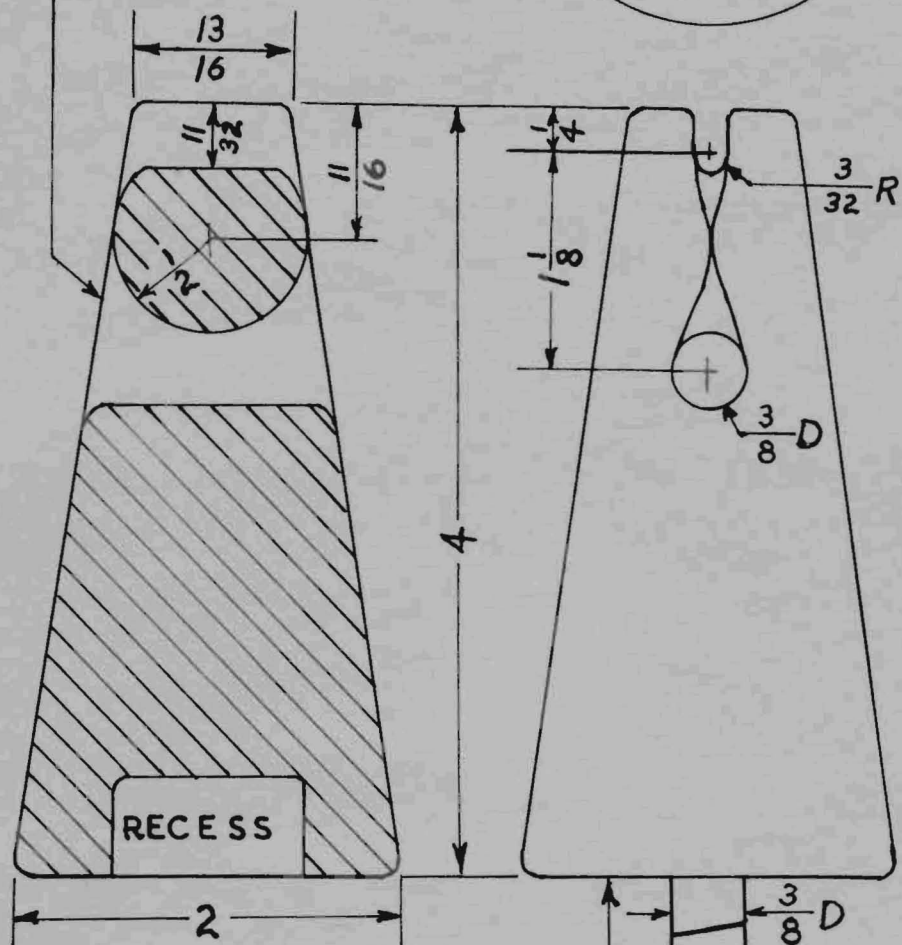
Yours faithfully,

Grote Reber.

Dimensions in Inches
Full Size



BROWN
ELECTRICAL
PORCELAIN



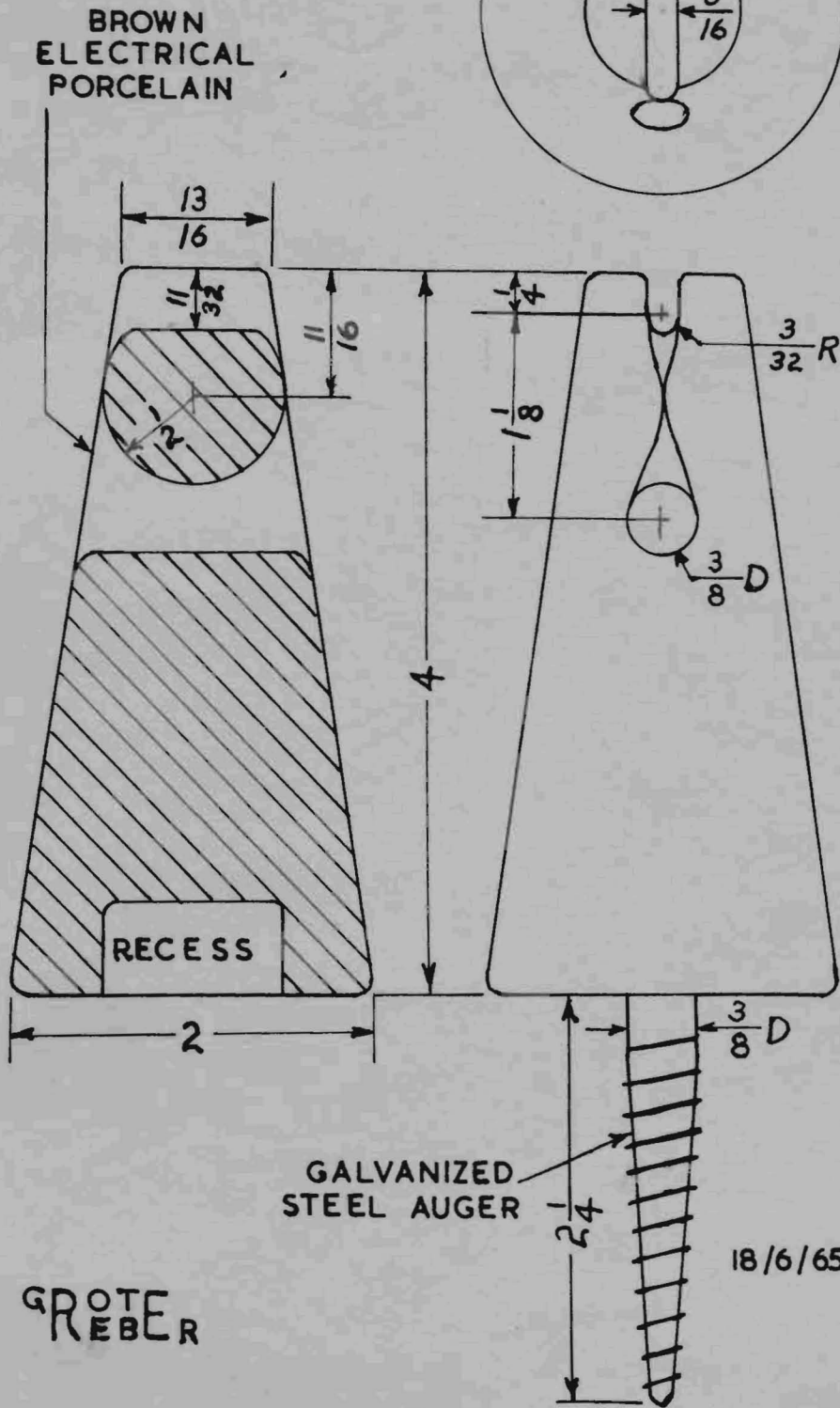
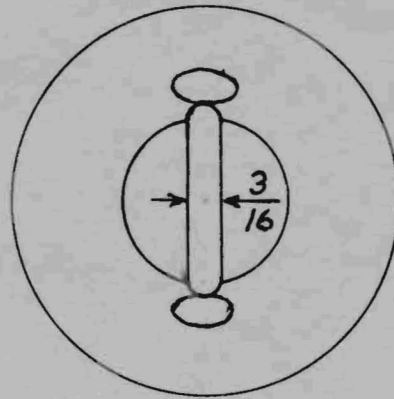
RECESS

GALVANIZED
STEEL AUGER

18/6/65

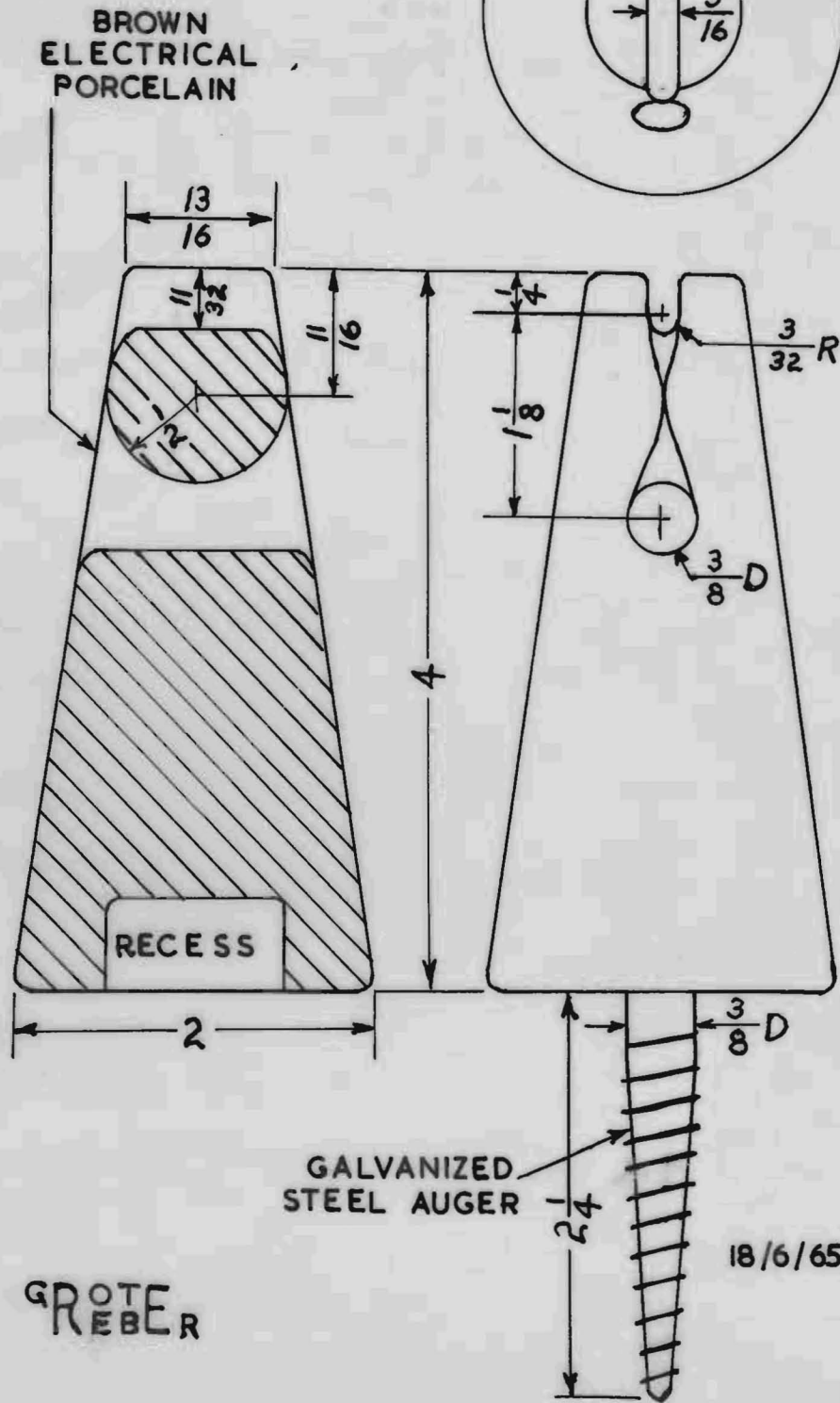
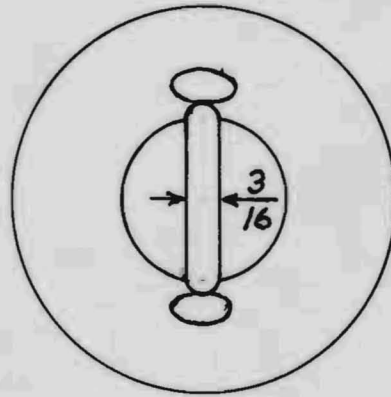
GROTE
REBER

Full Size
Dimensions in Inches



GROTE
REBER

DIMENSIONS IN INCHES
FULL SIZE



GROTE
REBER

Specification of Porcelain Auger Insulator.

- (1) Axis of auger to be parallel $\pm 3^{\circ}$ to axis of cone.
- (2) Axis of auger to be within $\pm 1/16"$ to axis of cone.
- (3) Throat radius to be $\frac{1}{4}" \pm 1/32"$.
- (4) Other dimensions and rounding of corners to be typical of good grade porcelain ware.
- (5) Material to be first grade white electrical porcelain.
- (6) Exterior to be completely covered by brown glaze except bottom.
- (7) Recess dimensions not shown. Make with grooves appropriate for head of auger.
- (8) Auger fastened into recess by metal. Plastic will not be acceptable.
- (9) Overfill recess slightly so that metal is flush or slightly outside porcelain level.
- (10) Mould cost to be listed separately.
- (11) Manufacturer to state number of pieces in package, volume of package, net and gross weights of package.
- (12) Manufacturer to state length of time :
 - (a) After placing of order to delivery of samples.
 - (b) After approval of samples to completion of goods.
- (13) Manufacturer to supply samples :
 - (a) Two porcelains without glaze less auger.
 - (b) Two porcelains with glaze less auger.
 - (c) Two augers.
 - (d) Two porcelains with glaze and auger complete.All these will be retained by purchaser.
- (14) Upon receipt of approval from purchaser the manufacturer will proceed with production.

GR/PS

Dr. Paul Wild,
Division of Radiophysics,
C.S.I.R.O.,
University Grounds,
City Road,
CHIPPENDALE,
New South Wales.

1st February, 1966.

Dear Paul,

Plans for my instrument at Bothwell include a reorganization of the feed system to provide multiple beams. Someone told me that you had novel insulators for supporting your radial feed lines. These might be adaptable to my purposes. If an extra one is about I would appreciate receiving a sample. Are they a standard product, or specially made? Who and where is the source of supply? How about paying us a visit someday?

Best regards,

Grote Reber.

CSIRO

DIVISION OF RADIOPHYSICS

UNIVERSITY GROUNDS, CITY ROAD, CHIPPENDALE, N.S.W. TELEPHONE 680566. TELEGRAMS CORESEARCH SYDNEY

7th February, 1966.

Mr. Grote Reber,
Tasmanian Regional Laboratory,
C.S.I.R.O.,
"Stowell",
Stowell Avenue,
HOBART, Tasmania.

Arrived 11/2/66

Dear Grote,

I am sending you under separate cover a sample of one of our insulators. Its description is "Insulator and cap moulded in poly propolene to C.S.I.R.O. die" and can be obtained from Solmar Industries, 384 Eastern Valley Way, Willoughby, N.S.W. The cost is 3/3 each for the insulator and 6d for the cap; for orders of less than 1000 a surcharge of £15 is liable to be made for putting the die on the machine. These insulators were developed here for the radioheliograph and orders have since been placed by O.T.C. and Queensland University.

Let me remind you that I did pay you a visit quite recently - and saw your magnificent array - but you were away chasing the remains of aboriginal settlements. Now, I reckon, it's your turn to come and see us at Culgoora; we'd certainly like to see you.

All best wishes,

Yours sincerely,

Paul

(J.P. Wild)

JPW:BE