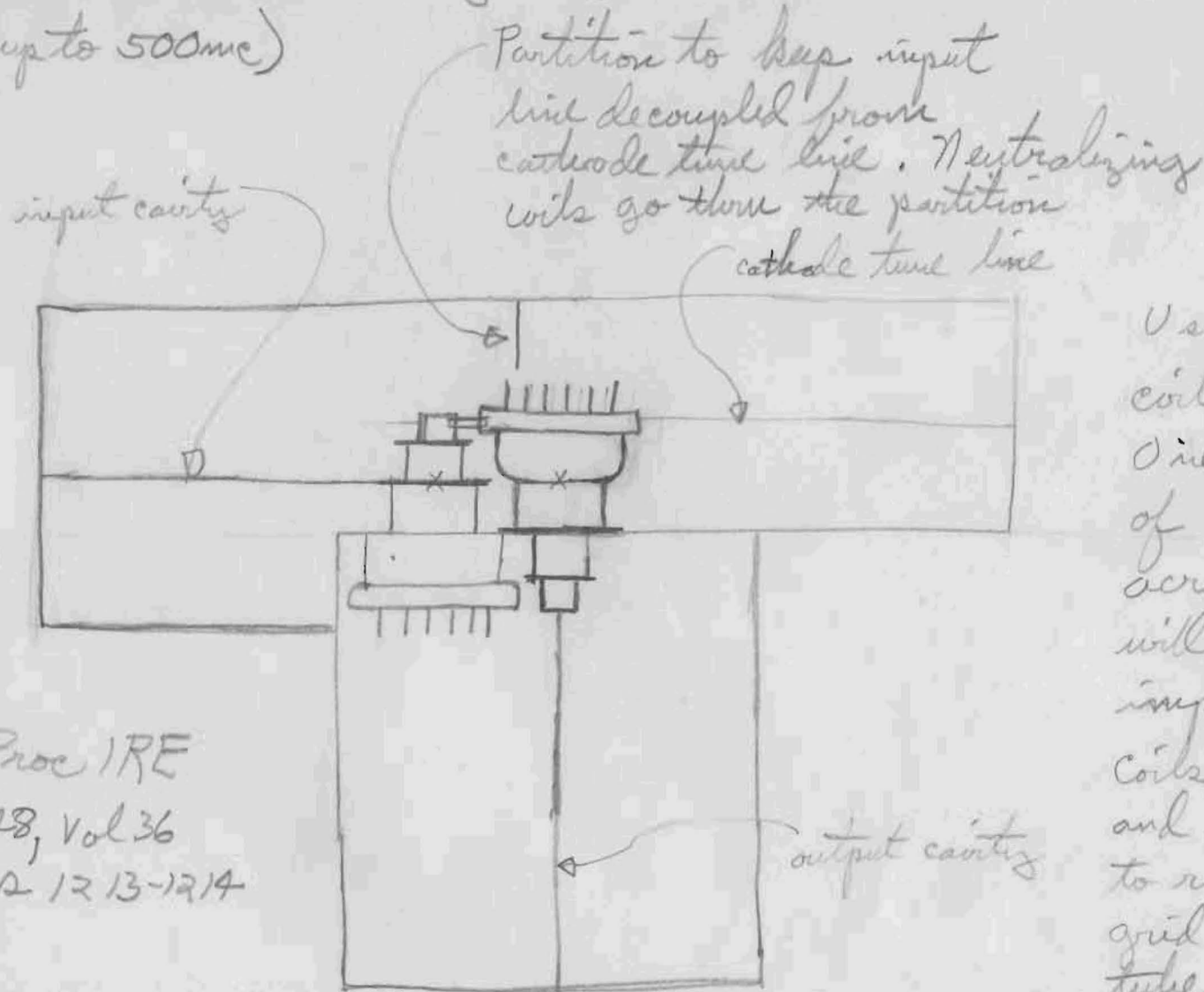


Wallman Circuit using Light House Tubes (good up to 500mc)

10-14-48



See Proc IRE
Oct 1948, Vol 36
No 10, p 1213-1214

tubes to ground will not be increased appreciably. This will keep down capacity across cathode tune line. This line should be made of high impedance and low capacity to keep broad band. Use 2C43 tubes

Use two neutralizing coils in parallel. One on each side of tubes jumped across x-x. This will give high impedance and Q. Coils should be long and small diameter to reduce capacity from grid to plate of first tube. They should also be small and mounted close to tubes so that the capacity of these