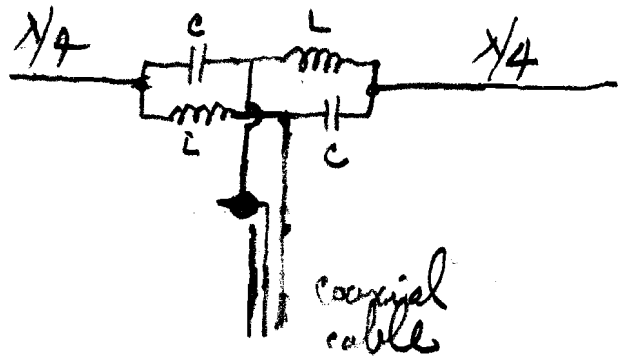


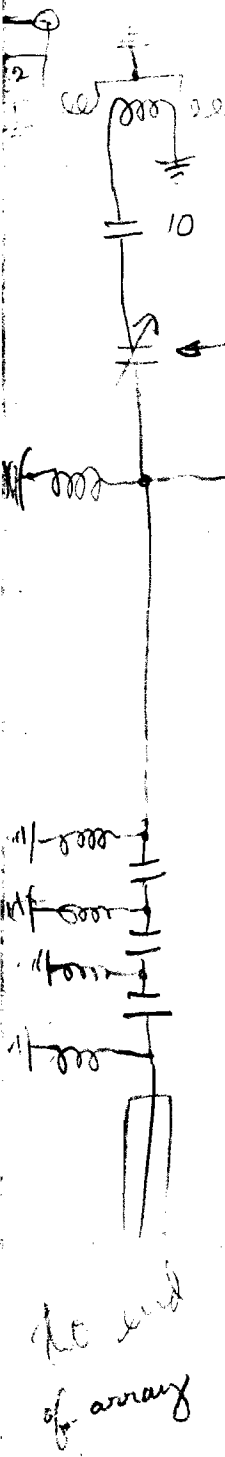
$$C_3 + C_4 = 59 \text{ pF}$$

$$C_8 = ?$$

Phase and amplitude system used on Shain's N/S array arms.



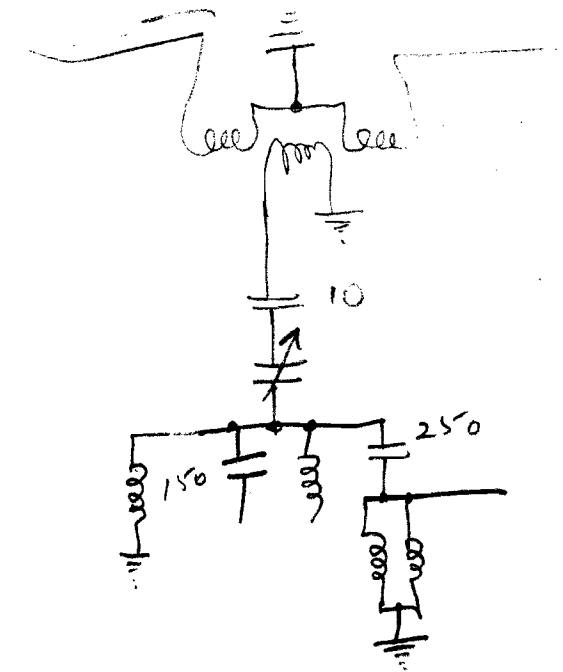
coupling network used at center of each  $\lambda/2$  antenna in north/south arm. L & C are series resonant at operating frequency. Coaxial cable had to be an odd number of quarter wave long. The network transformed from balanced antenna to unbalanced line.



antenna  
 coupling coil at center } this coupling coil represents  $\frac{1}{2}$  with center tap grounded.  
 of four antennas

amplitude adjusting condenser

Phase adjusting network  
 representing about  $360^\circ$   
 phase delay total



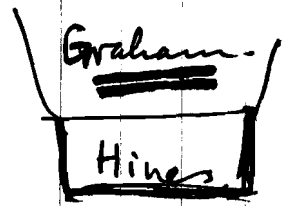
Phase and coupling system used on east west arms  
 of Shain's 19.7 mc array at Fleurs,  
 about 8 Dec 60.

to end  
 of array

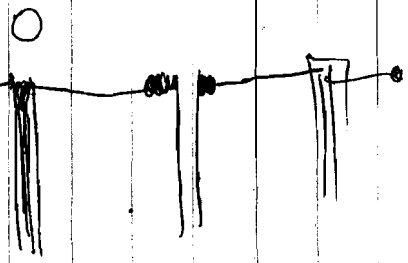
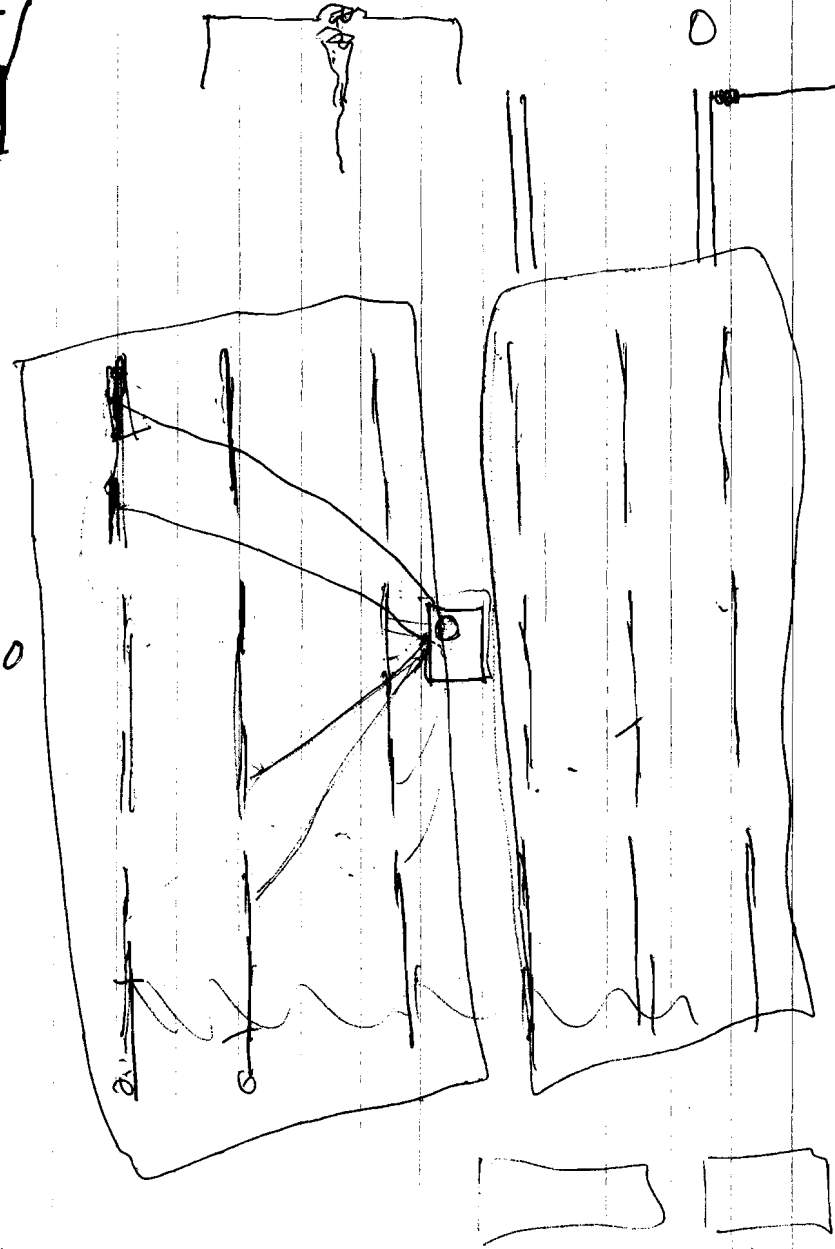
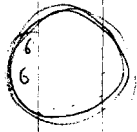
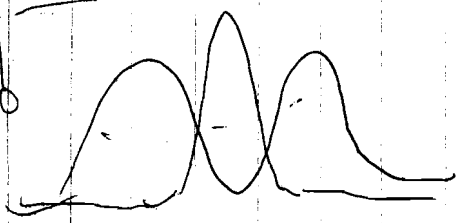
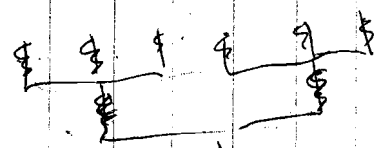
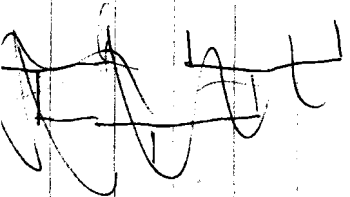
centre  
 of array

3.5  
2.05  
6.45

210 → 340 m



Antenna  
at Hornsby  
per Higgins  
about 10 Dec 60



X

1454) 85525 (5882  
 72700  
 12825  
 11630  
 11930  
 11632  
 2980

183.5 λ

λ = 35051 m  
 8554

85.525  
 1.454 = 58.82

29.21  
 6.17.61