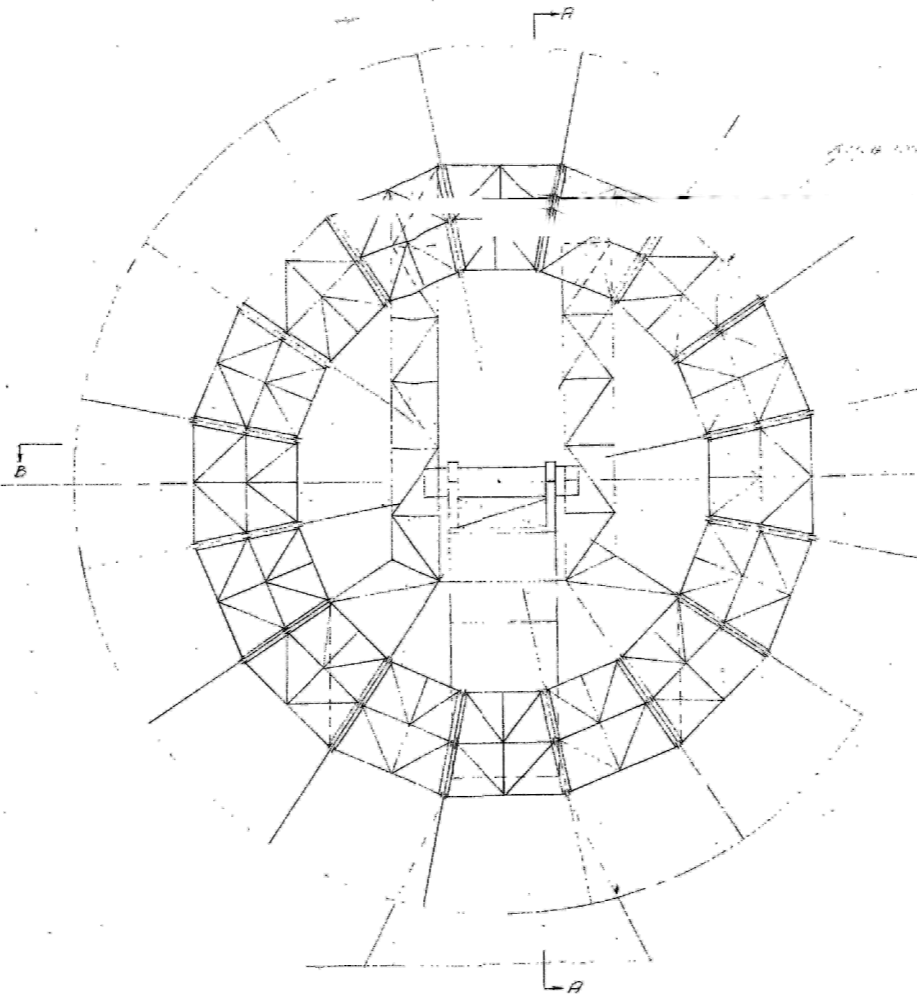
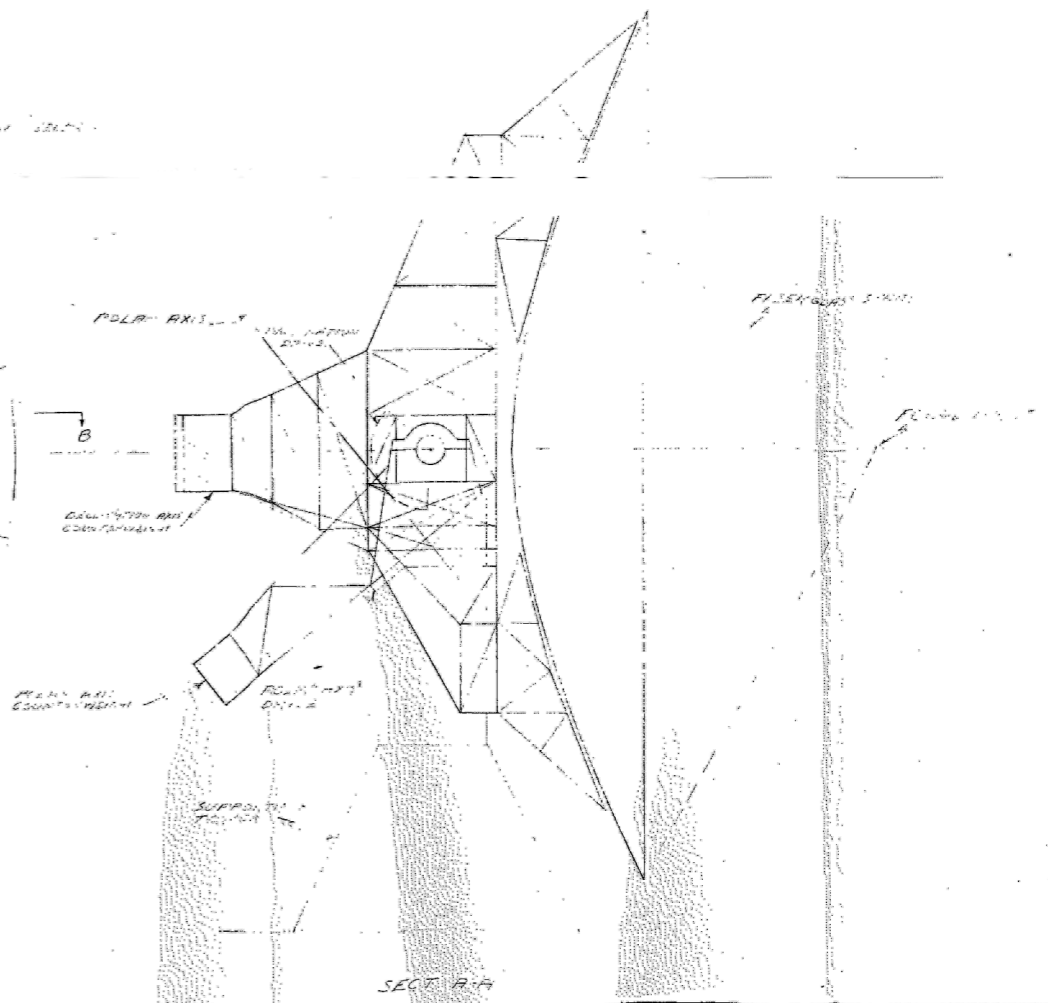


FRONT VIEW-PANEL LAYOUT



FRONT VIEW-BACKUP TRUSSES
(PANELS REMOVED)



SECT. B-A

GENERAL BRONZE CORPORATION		
STEWART AVENUE, GARDEN CITY, N.Y.		
SCALE: 1"=10'	APPROVED BY: LV	DRAWN BY: R.F.B.
DATE: 5-22-57		
PROPOSED 90' PARABOLICAL RADIO TELESCOPE FOR ASSOCIATED UNIVERSITIES, INC.		
		DRAWING NUMBER FIG. 171