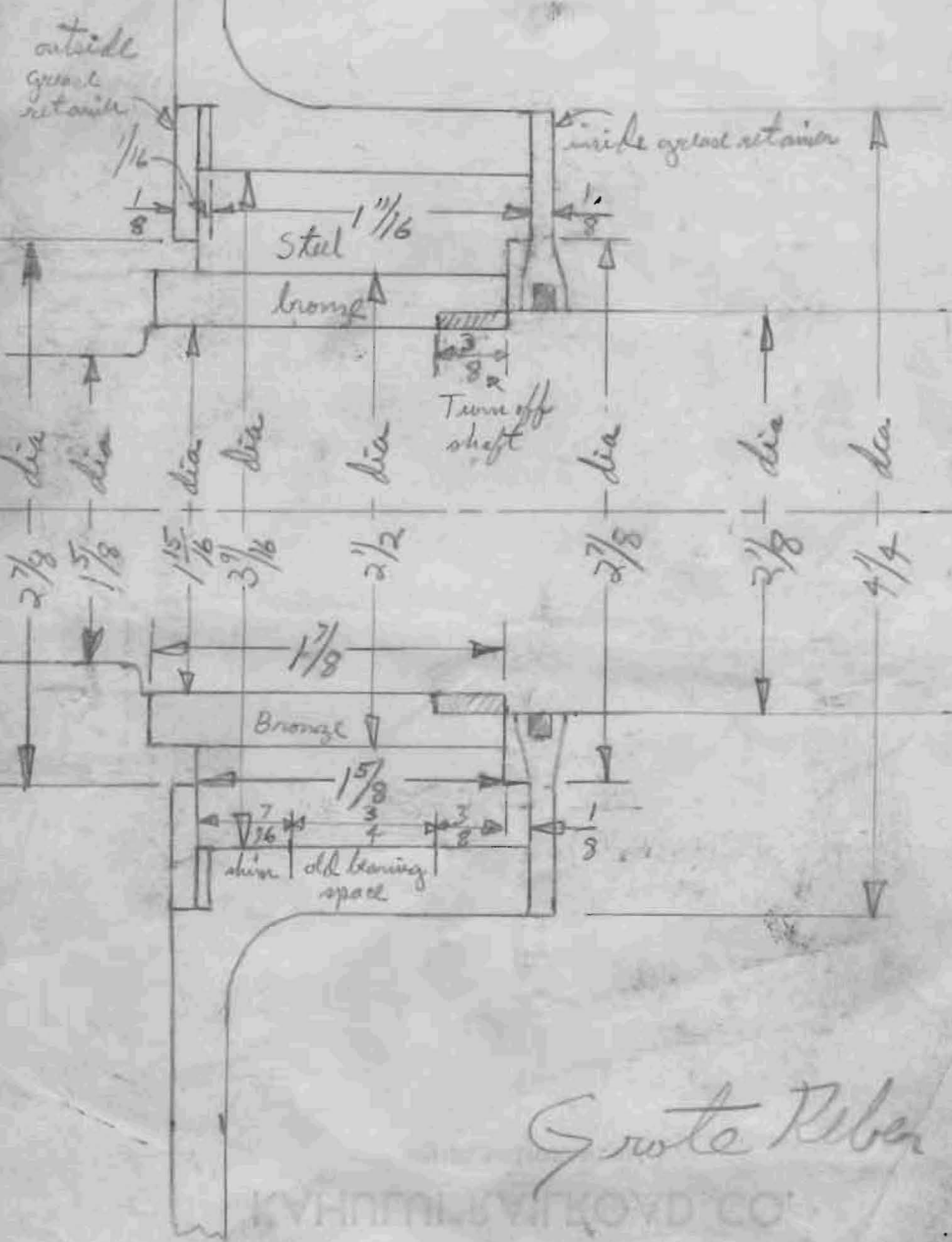
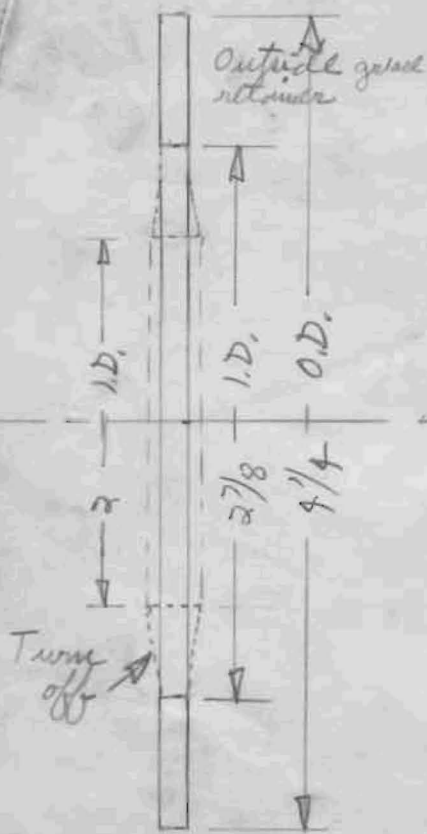


Large End

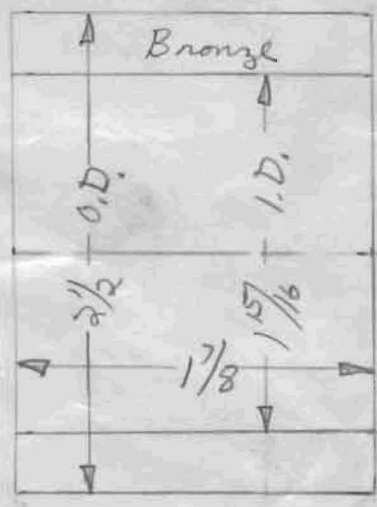


Grote Riben

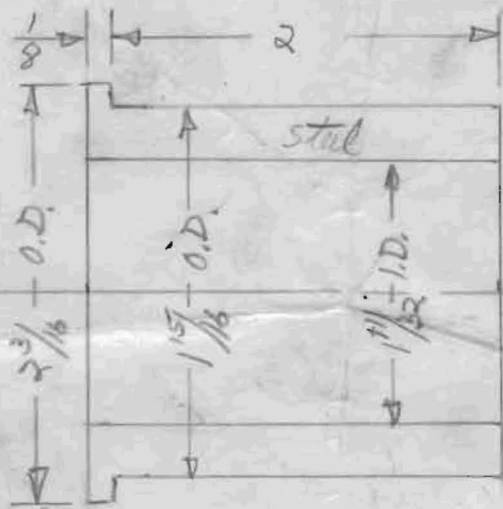
KUNNINGHUIS VITKOYD CO



Large End



12-10-52
Grote Rebor



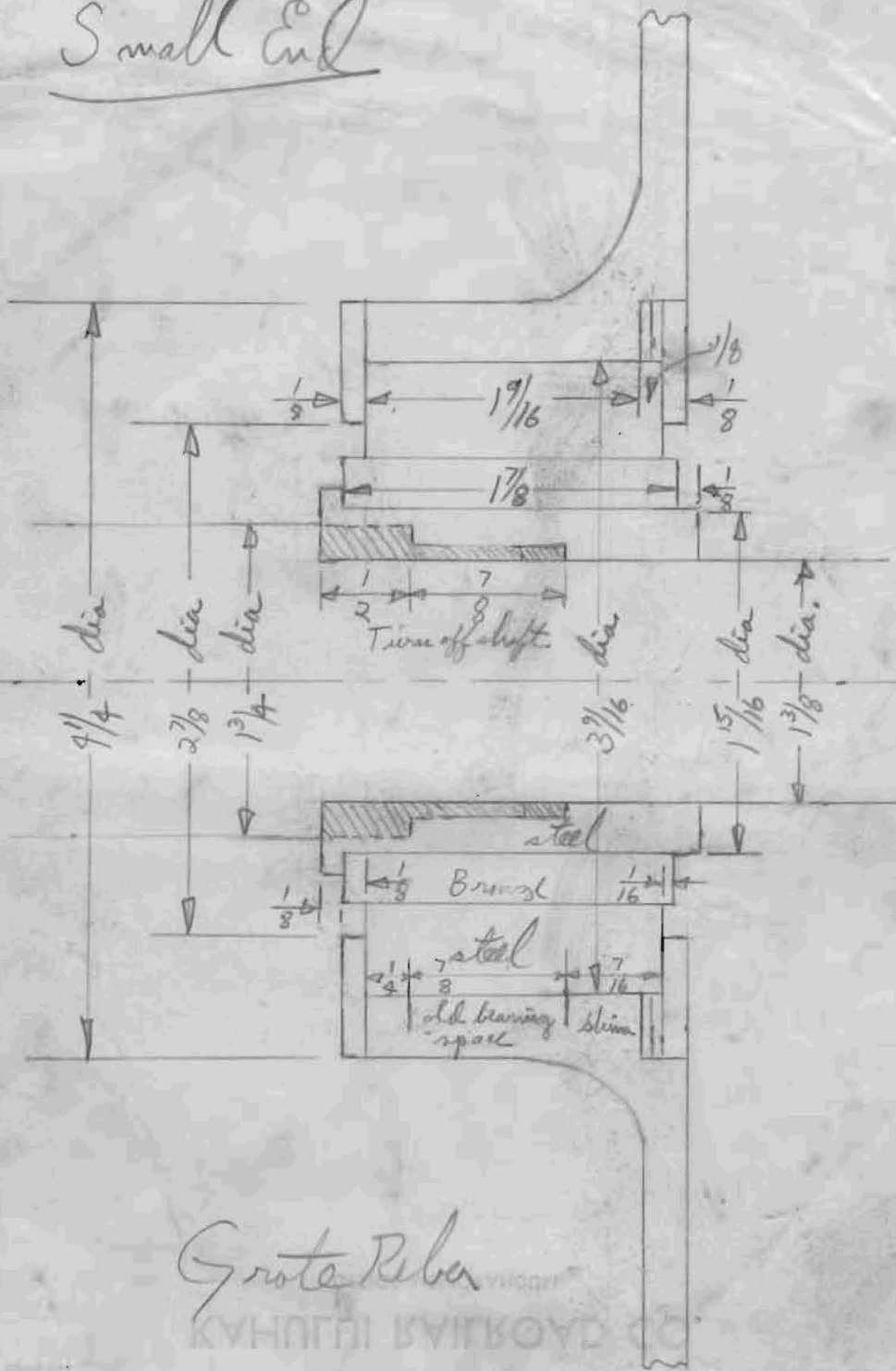
Sleeve

~~1.96~~

12-10-52

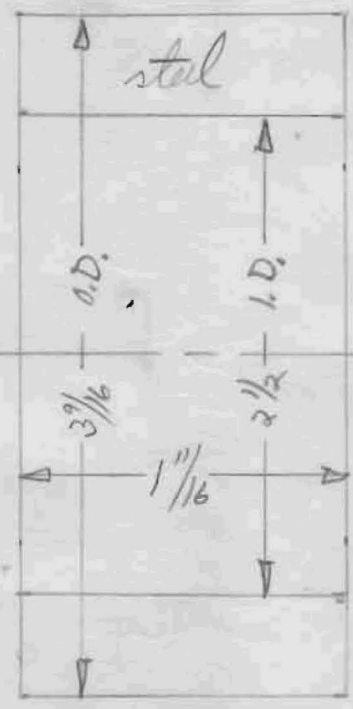
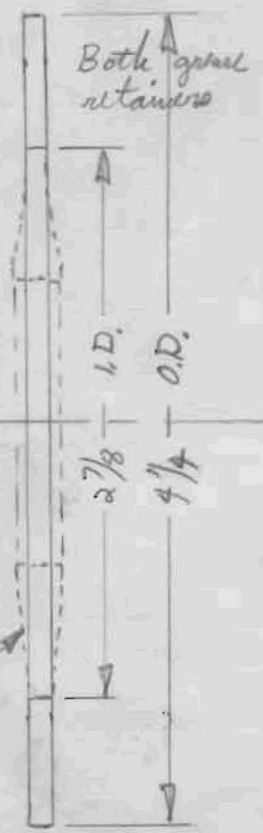
Grote Riben

Small End

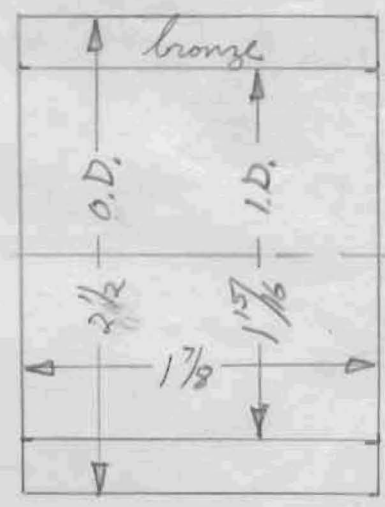


Grote Reber
KUNSTLIJKE BUIKBOUW O O

KAHUNA RAILROAD
turn off



Small end



Grote Reber
12-10-52

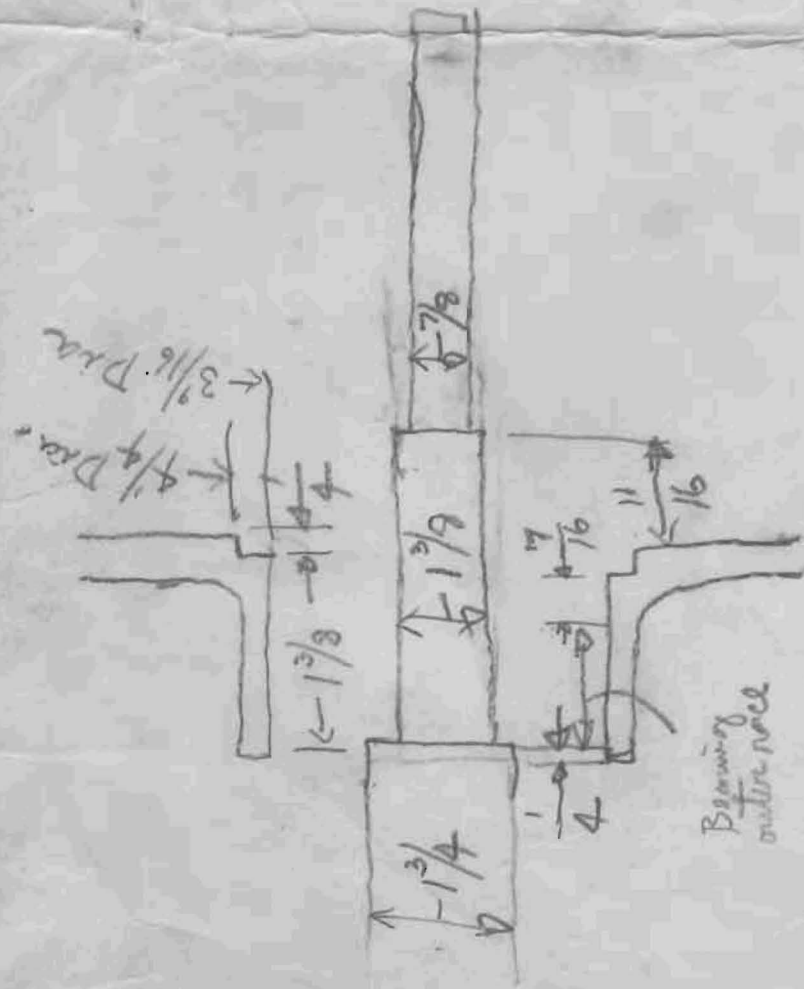
1445 x 4 = 57980
 3105 x 6 = 18630
 3105 x 7 = 21735
 1445 x 5 = 7225

2 in. square
 filigree

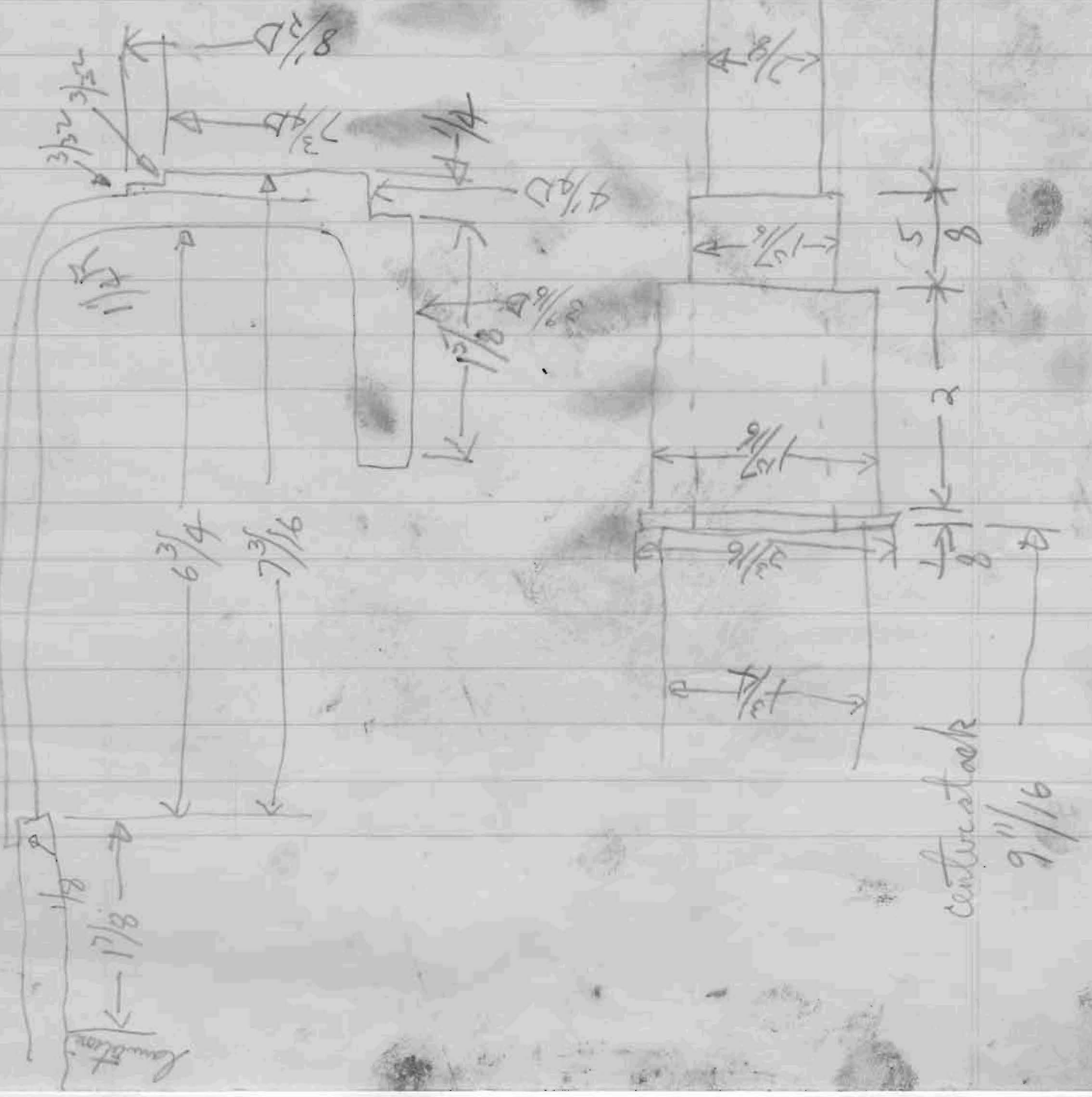
3105 ke
 1495 ke
 CAA

1 pc $1\frac{3}{4}$ 1.D x $2\frac{1}{2}$ D x 2" long
 3' side
 1 pc $1\frac{1}{2}$ 1.D x 2" D x 2" long
 3' side

Oilite Bronze
 Bearings made by
 KRR,
 Lasted only a few months
 but very quiet.



Frame 9 7/8" overall

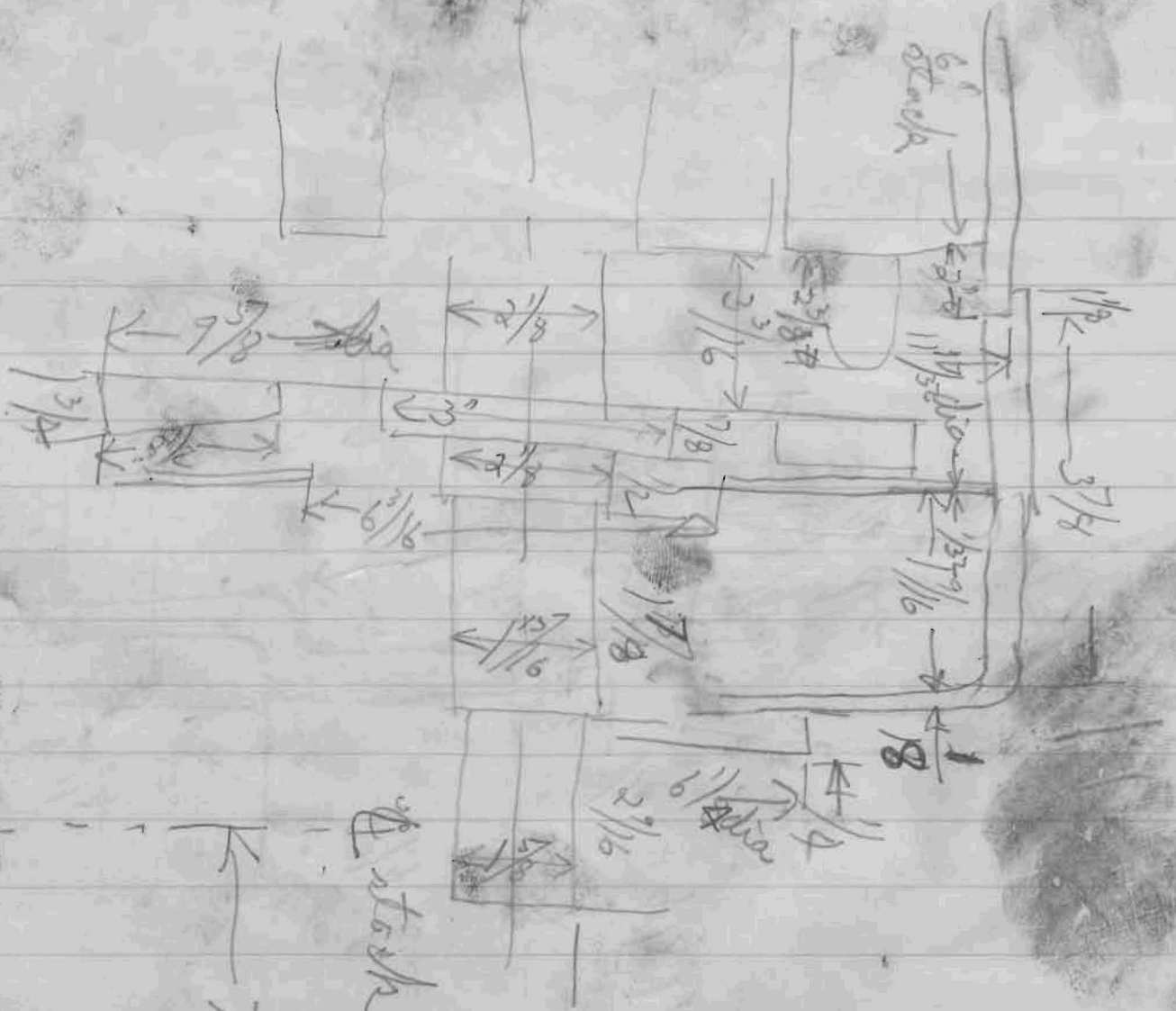


Brush
Stud 3" off center

Windings stick out
1/2" on front end
1 1/2" on rear end



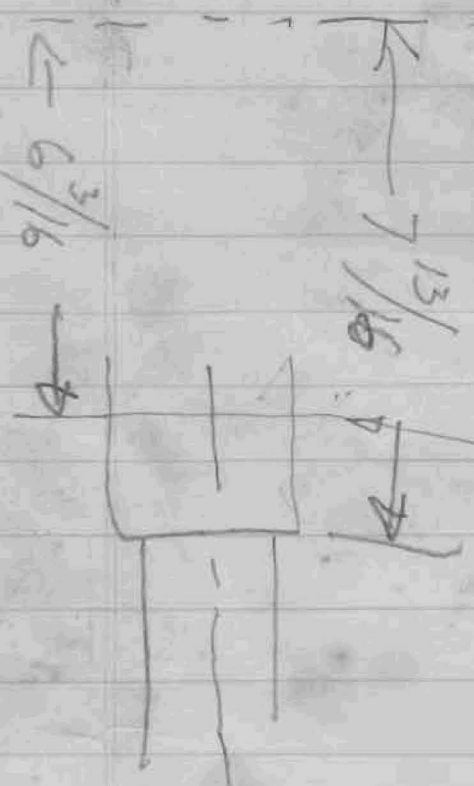
center stack
9 1/16"

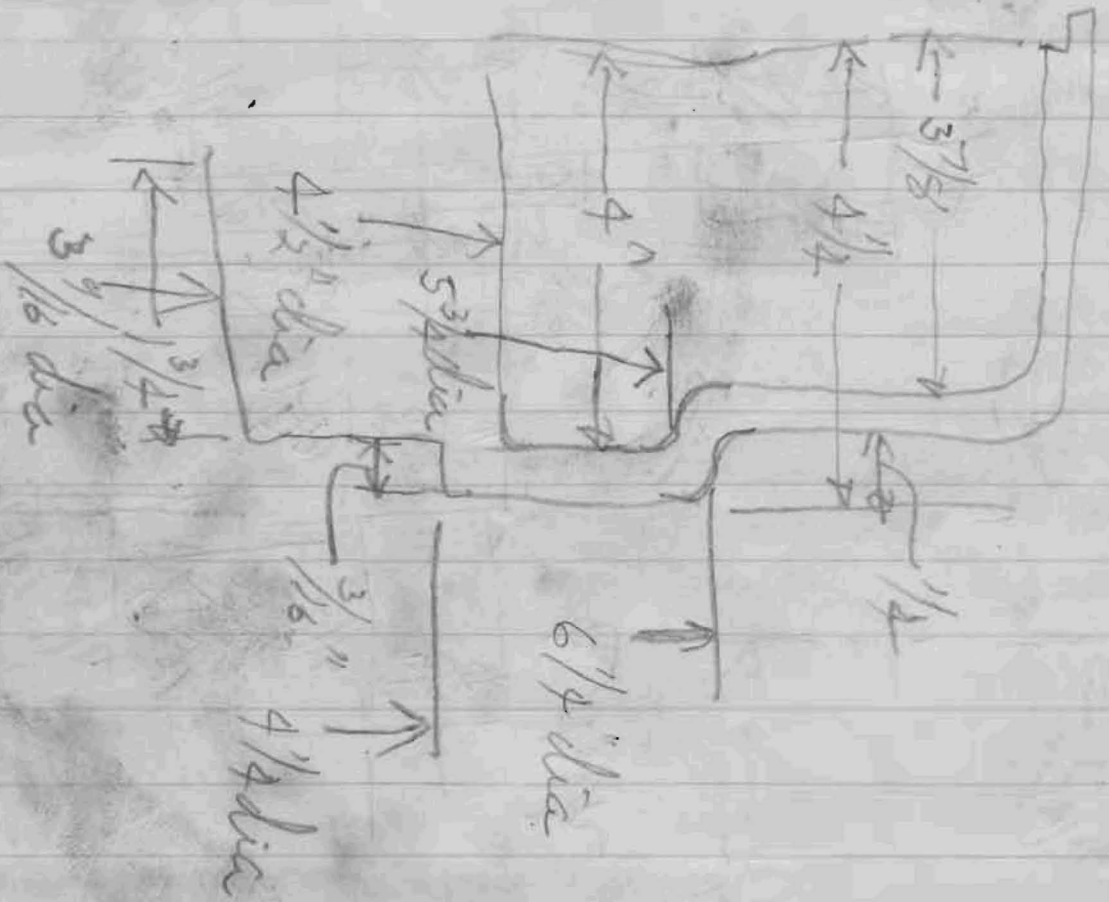


stack

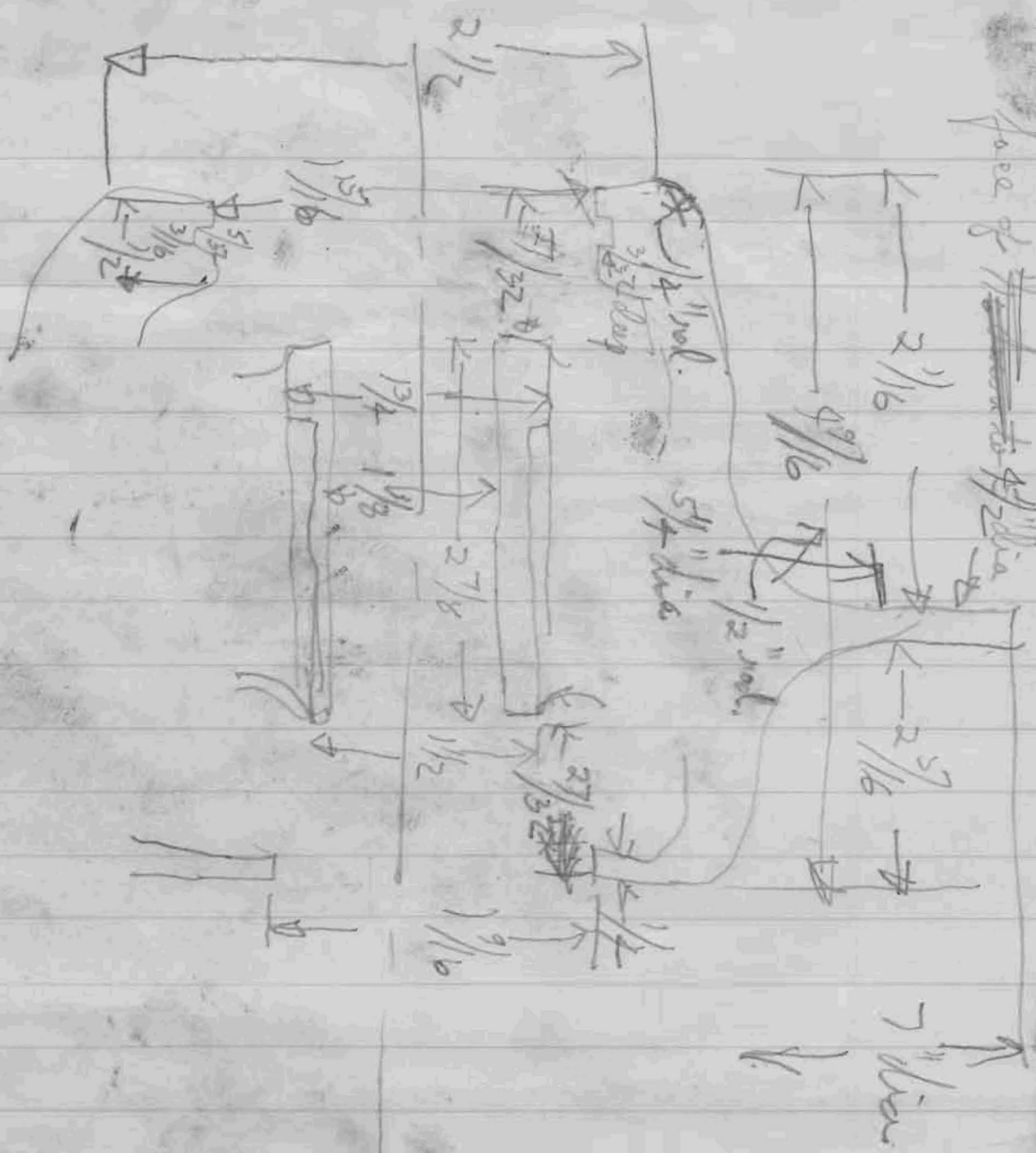
Back of face

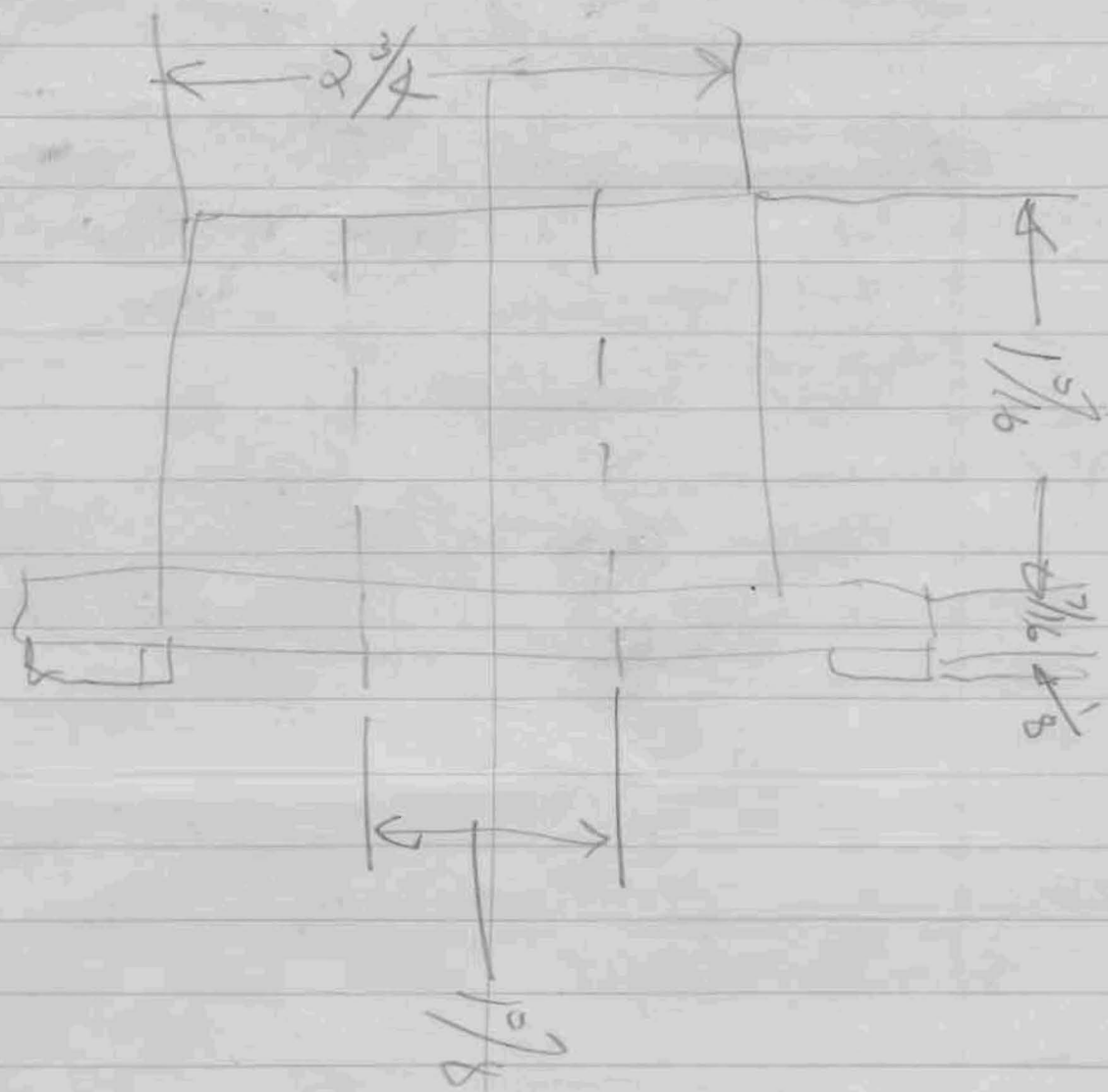
$$\begin{array}{r}
 1 \frac{15}{16} \\
 1 \frac{1}{16} \\
 \hline
 2 \frac{1}{8} \\
 5 \frac{13}{16} \\
 \hline
 7 \frac{9}{16} \\
 4 \frac{1}{4} \\
 \hline
 11 \frac{1}{4} \\
 3 \frac{3}{16} \\
 \hline
 14 \frac{1}{8} \\
 1 \frac{11}{16} \\
 \hline
 15 \frac{1}{16} \\
 3 \frac{1}{4} \\
 \hline
 18 \frac{1}{16}
 \end{array}$$

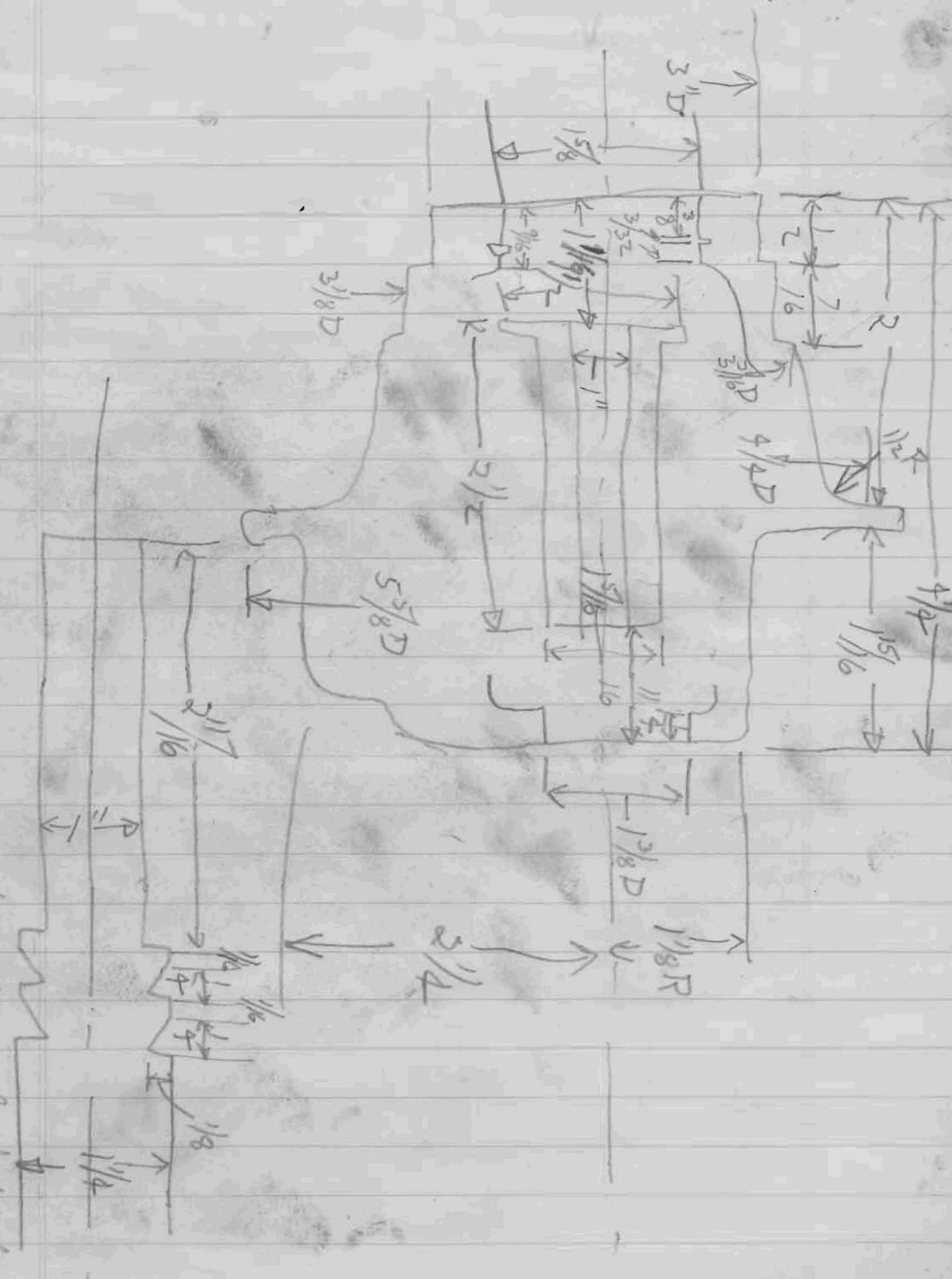




face of ~~4 1/2~~ 4 1/2 dia







reverse direction of shaft to agree with drawing