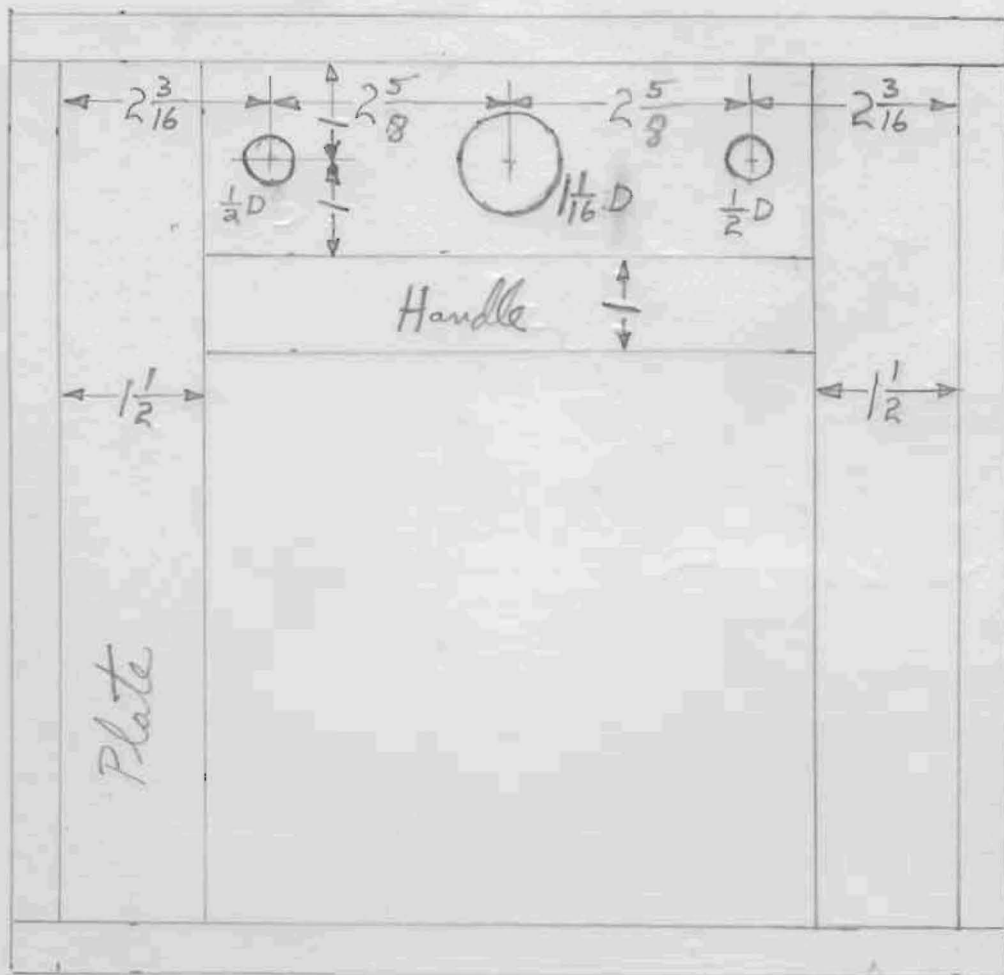


Front View

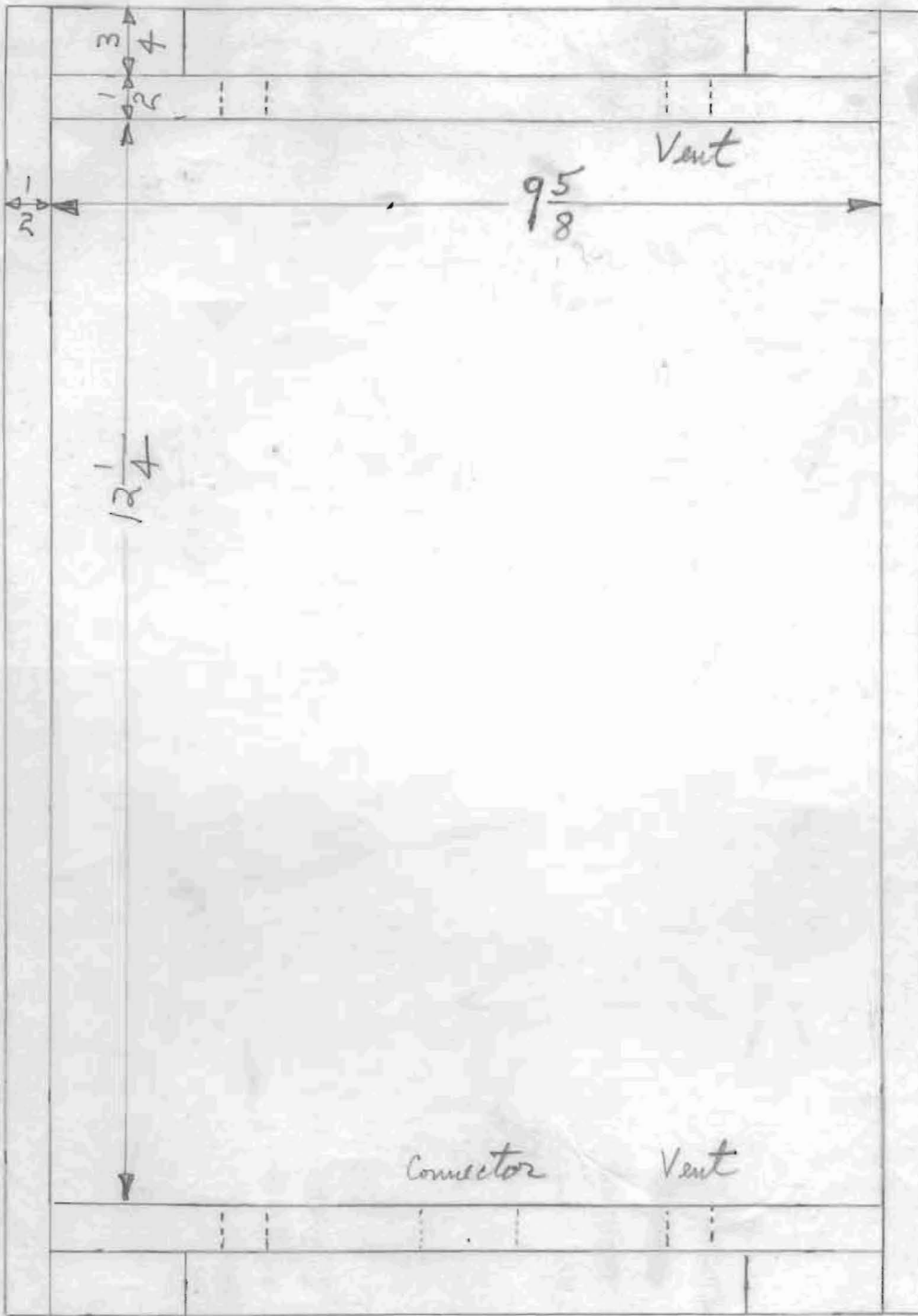


$\frac{1}{2}$ " Plywood Lib, Bottom, Sides and Ends

$\frac{3}{4}$ " Hardwood Plates, Guides
and Handles

Grote Reber
18/2/63

Top View with lid removed



Back

Front

4 Vents
1 Connector Opening

Grote Reber
18/2/63

Saw on 19/2/63

Side View

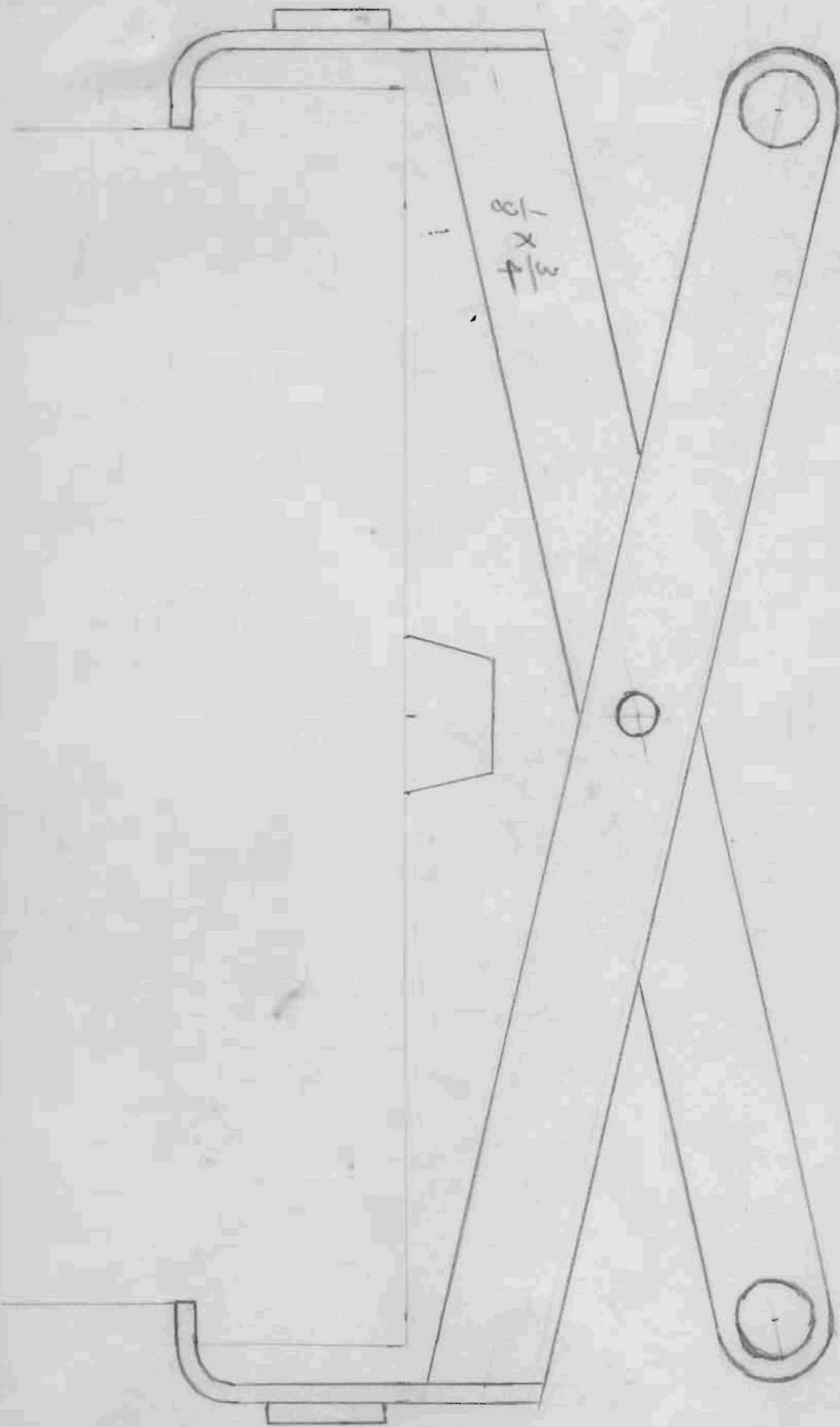


Undercut
finger grip

Glue all joints
Fasten with flat head screws.

Grote Palen
18/2/63

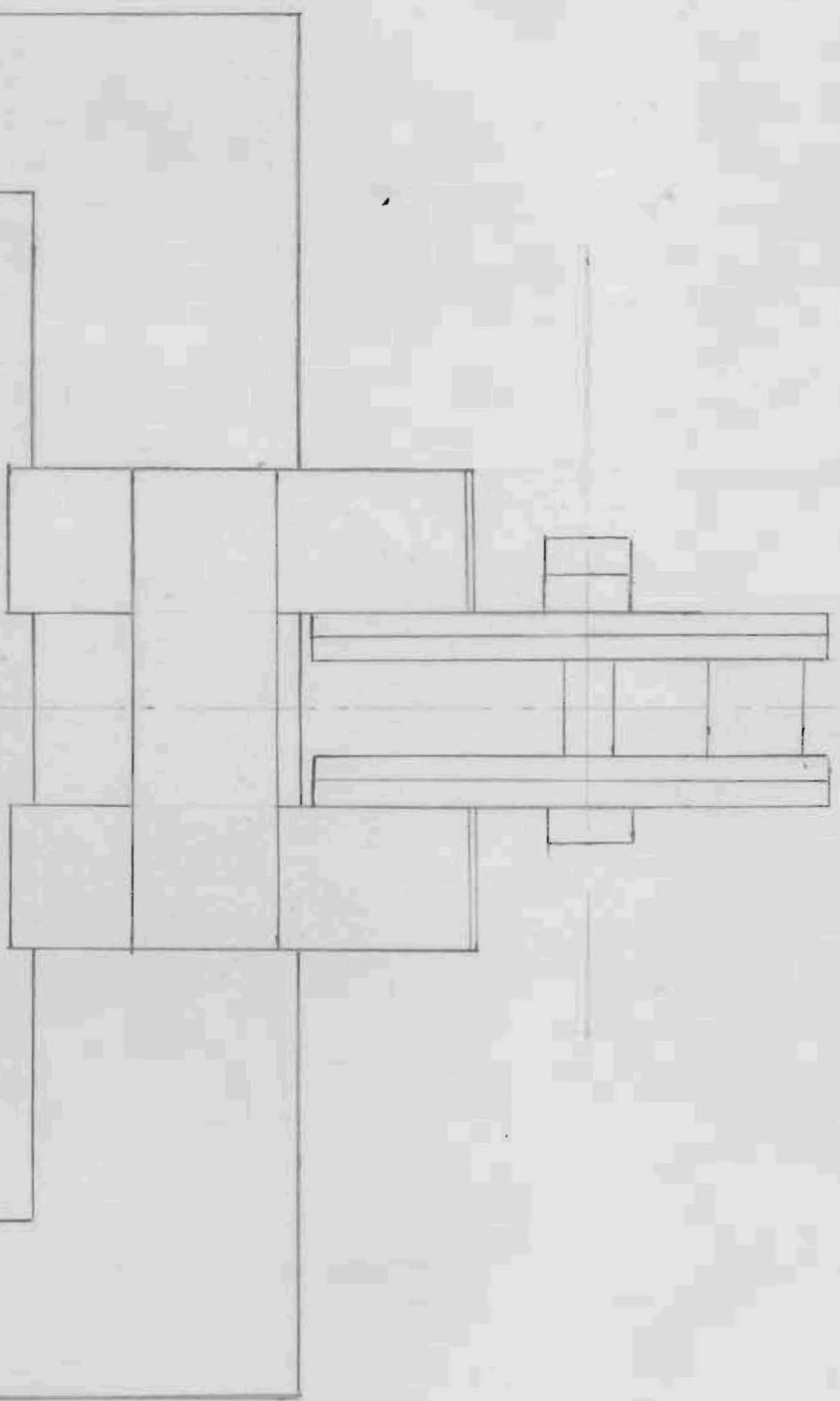
Battery Tongue

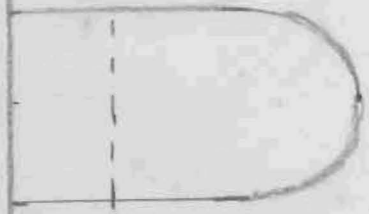


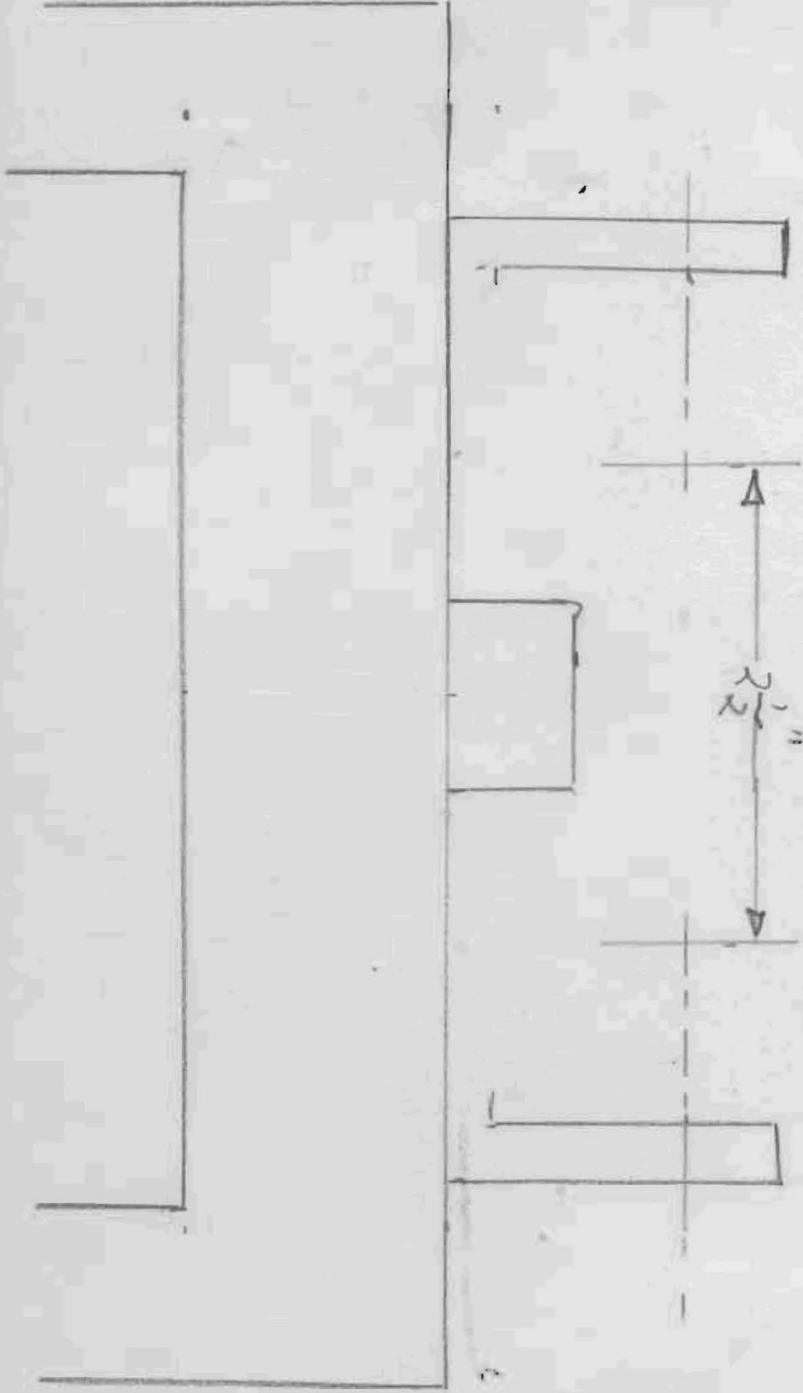


4 pcs $9\frac{1}{8}$ = 36.5 1 - $\frac{1}{4} \times 1\frac{1}{2}$ bolt & nuts
 4 pcs $2\frac{3}{4}$ 11 1 bushing $\frac{1}{2}$ " long, $\frac{1}{4}$ " I.D.
 2 pcs $2\frac{1}{2}$ 5 1 bushing $\frac{3}{4}$ " " , $\frac{1}{2}$ " O.D.
 Total 52.5 " 1 " " , $\frac{1}{2}$ " O.D.
 $\frac{1}{8} \times \frac{3}{4}$ flat iron

$\frac{1}{2}$ " Dia rope 3 ft long
 Binding tape







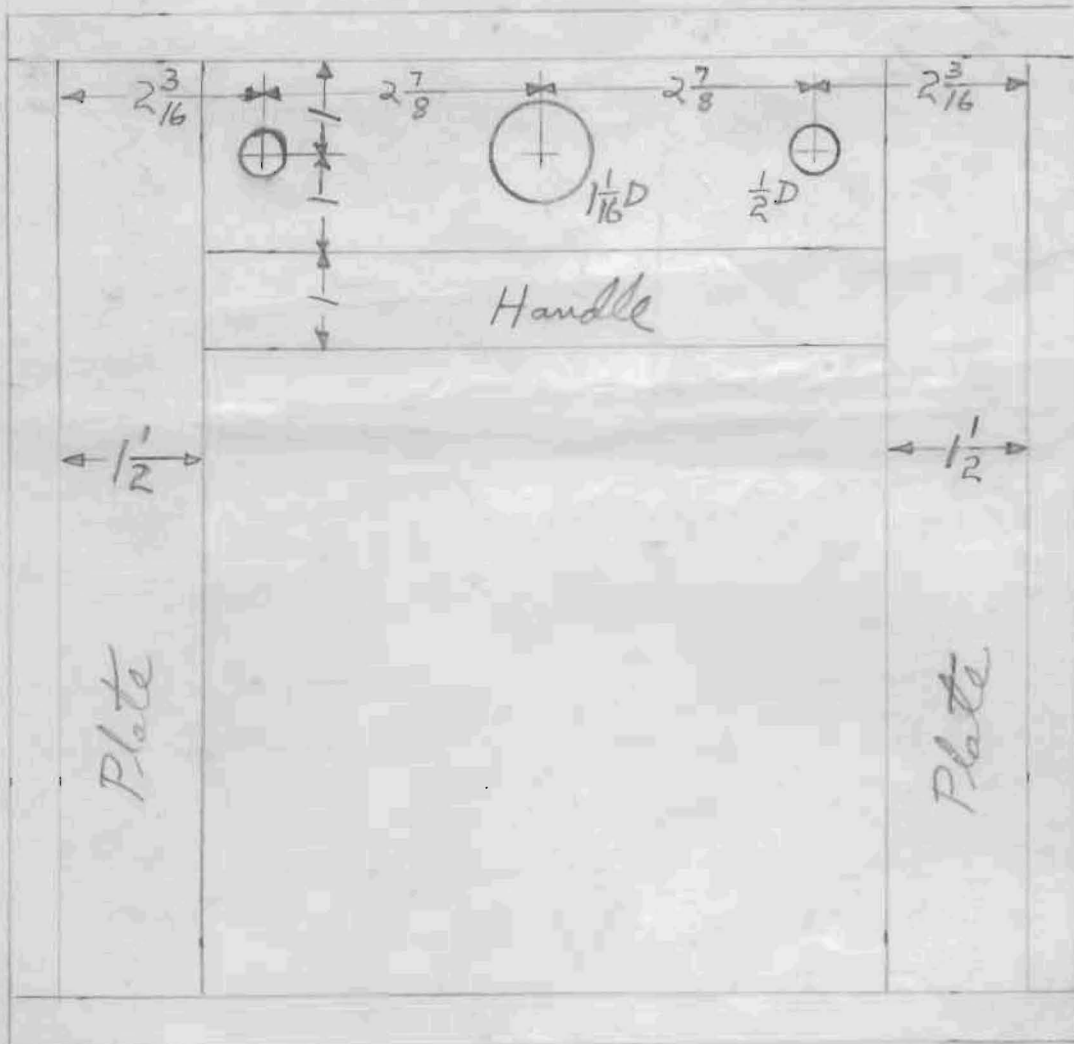
Clearance

$$r/2$$

7 off

Only used one of these

Front View



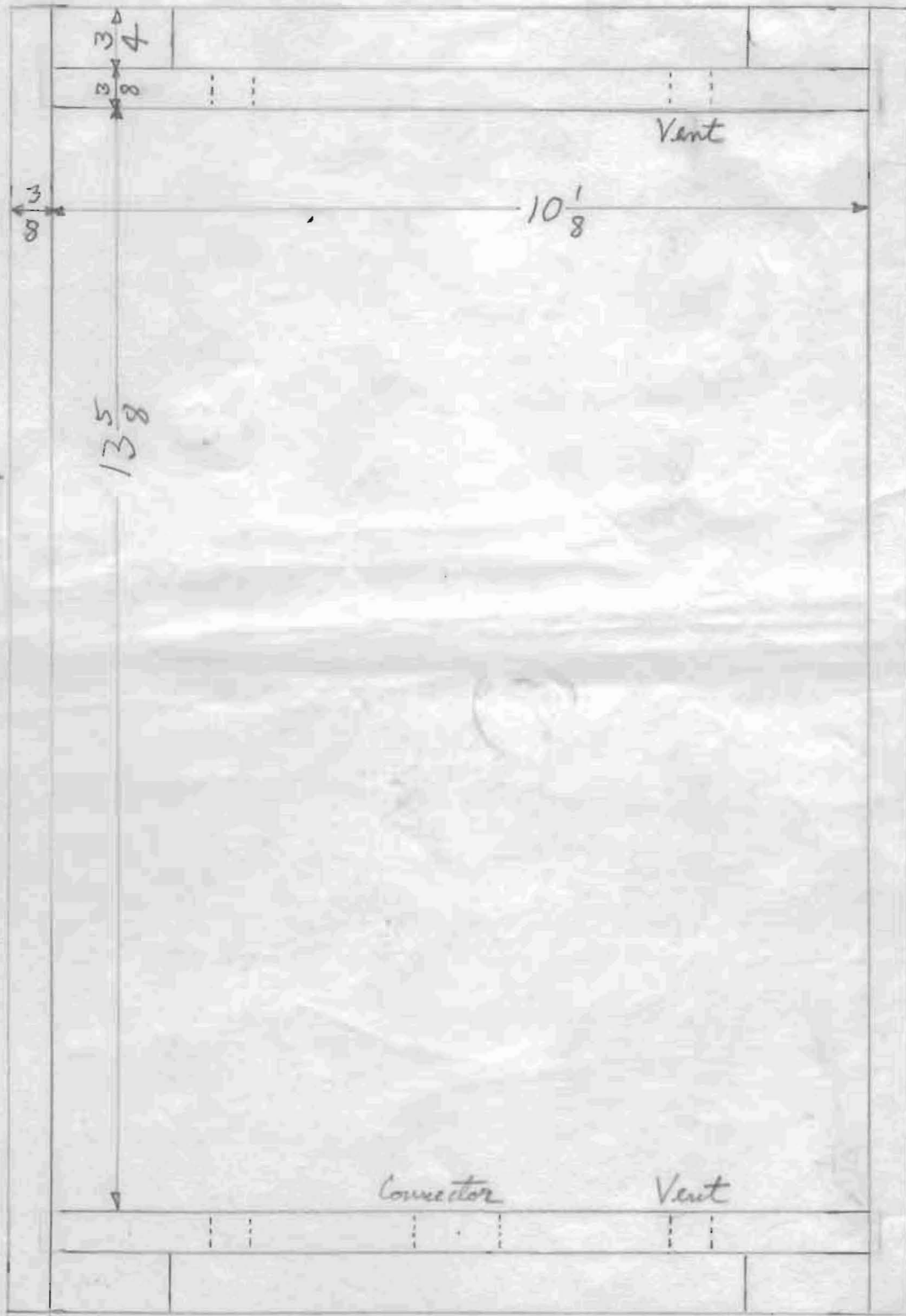
$\frac{3}{8}$ " Plywood Lid, Bottom, Sides and Ends

$\frac{3}{4}$ " Handwood Plates, Guides and Handles

Grote Reber
16/10/64

Top View with lid removed

Two sample batteries must slip in freely.



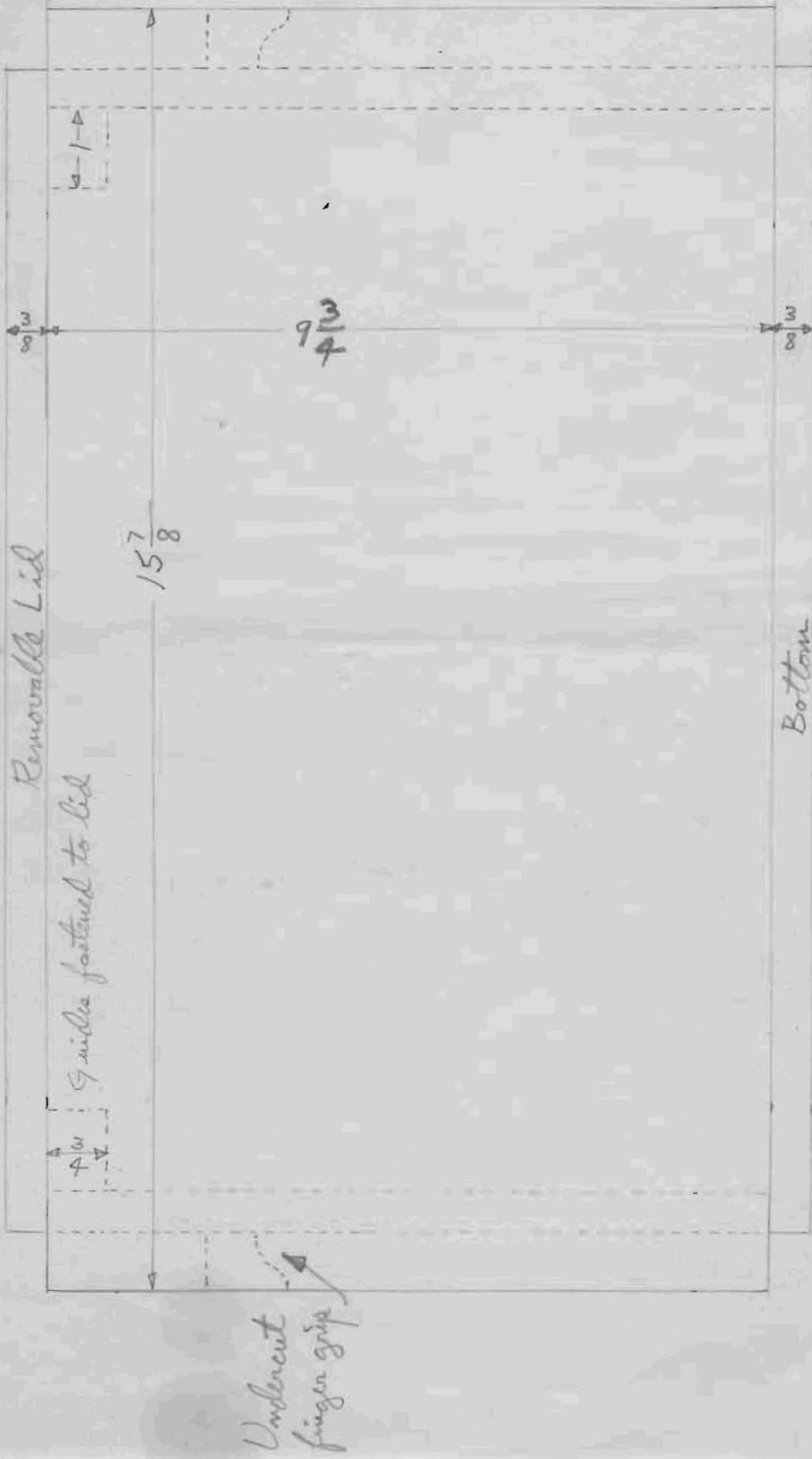
Back

Front

Grote Reber
16/10/64

4 Vents
1 Connector Opening

Side View



Glue all joints
Fasten with flat head screws
Two coats of White paint inside and outside

Grote Reber
16/10/64

$\frac{72}{17} = 4.235$
 $\frac{46}{26} = 1.769$

14 sides $15\frac{7}{8} \times 9\frac{3}{8} = 3$ pcs across 4' wide sheet

14 tops & bottoms $14\frac{3}{8} \times 10\frac{7}{8}$

14 ends $10\frac{1}{8} \times 9\frac{3}{8}$

$\frac{42}{7} = 6$
 2 gross
 1" x #6
 $\frac{22}{7} = 3.142$
 154

2 gross
 #6 x 1 1/2"
 steel flat wash
 54/3 3.02

3/8 Marine

6'-3' - 3/8
 6'-4' - 3/8
 7'-3' - 3/8
 7'-4' - 3/8
 8'-4' - 3/8

3/8
 (2)
 6-3
 6-4
 7-3
 7-4
 8-4

54/3 3.02
 72/3
 63/3
 122
 30 days

Cusped Gunn.