

Pole H8, straight stub, shorting bar 14 feet 10/3/65
 from end. See response curves of 20/2/65
 Characteristics of small tuner box 182t, 32tpi, 9t load, 30dB attenuator

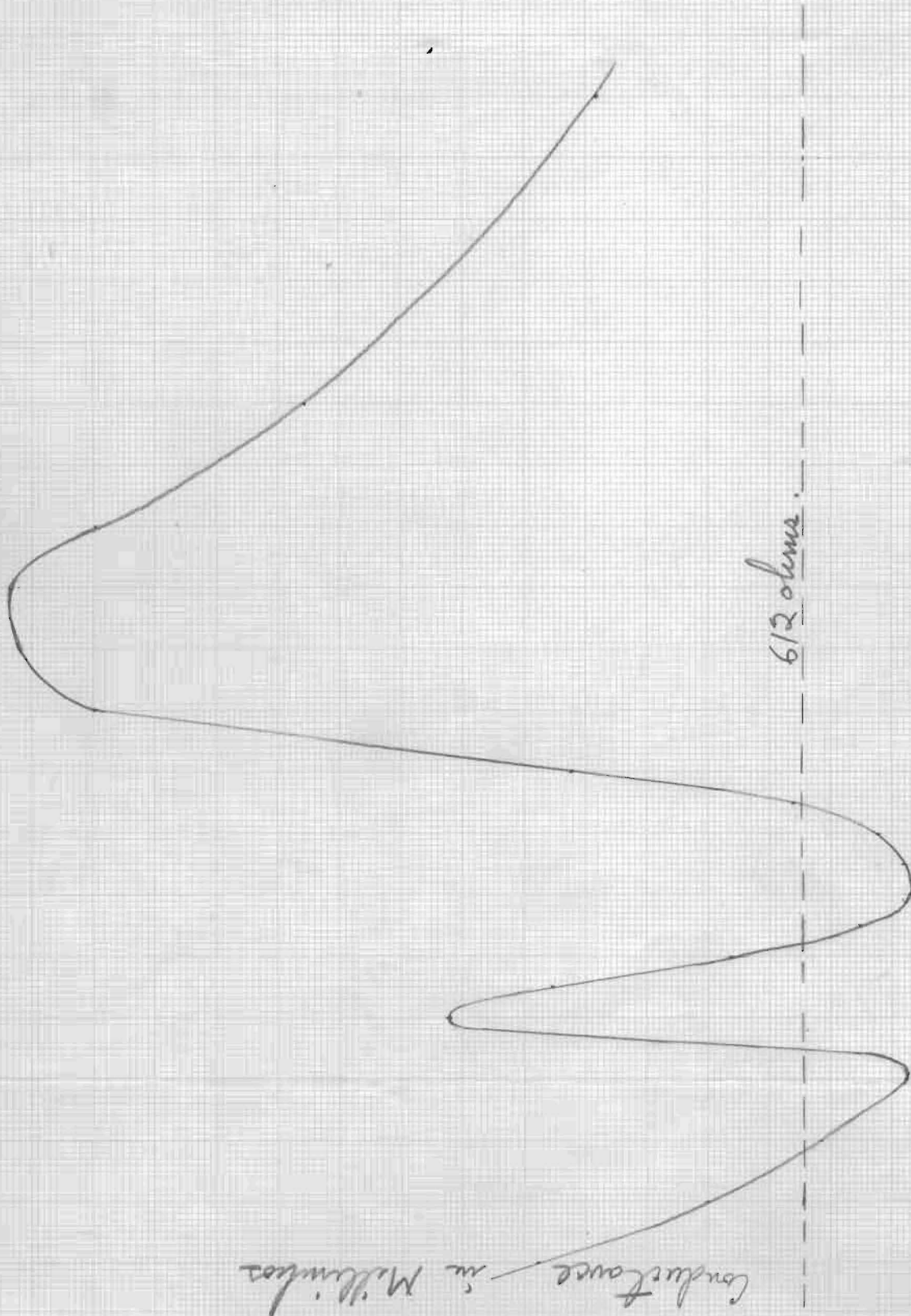
MC	millimhos	uf	dial	pf	total	Volume	Low C	Robin
1.60	2.69	.0002	68	18	218		L	
1.70	2.00	.0001	126	96	196		"	
1.80	1.53	.0001	102	52	152		"	
1.85	1.25	.0001	43	4	104		"	
1.90	1.19	0	102	52	52		"	
1.95	1.81	0	65	16	16		C	
2.00	3.07	0	87	34	34		L	
2.05	2.63	0	132	108	108		"	
2.10	1.91	.0001	53	9	109		"	
2.15	1.38	0	119	82	82		"	
2.20	1.17	0	86	33	33		"	
2.25	1.21	0	42	4	4		C	
2.30	1.31	0	93	40	40		"	
2.35	1.65	0	124	92	92		"	
2.40	2.56	.0001	73	21	121		"	
2.50	4.50	0	120	84	84		"	
2.60	4.79	0	61	14	14		L	
2.70	4.84	0	108	60	60		"	
2.80	4.49	0	124	92	92		"	
3.00	3.65	.0001	65	16	116		"	
3.5	2.46	0	130	104	104		"	

Output of Tuner Box on Pole H8

10/3/65

Secondary 182T, 32tpi, 9T load, 30B attenuator

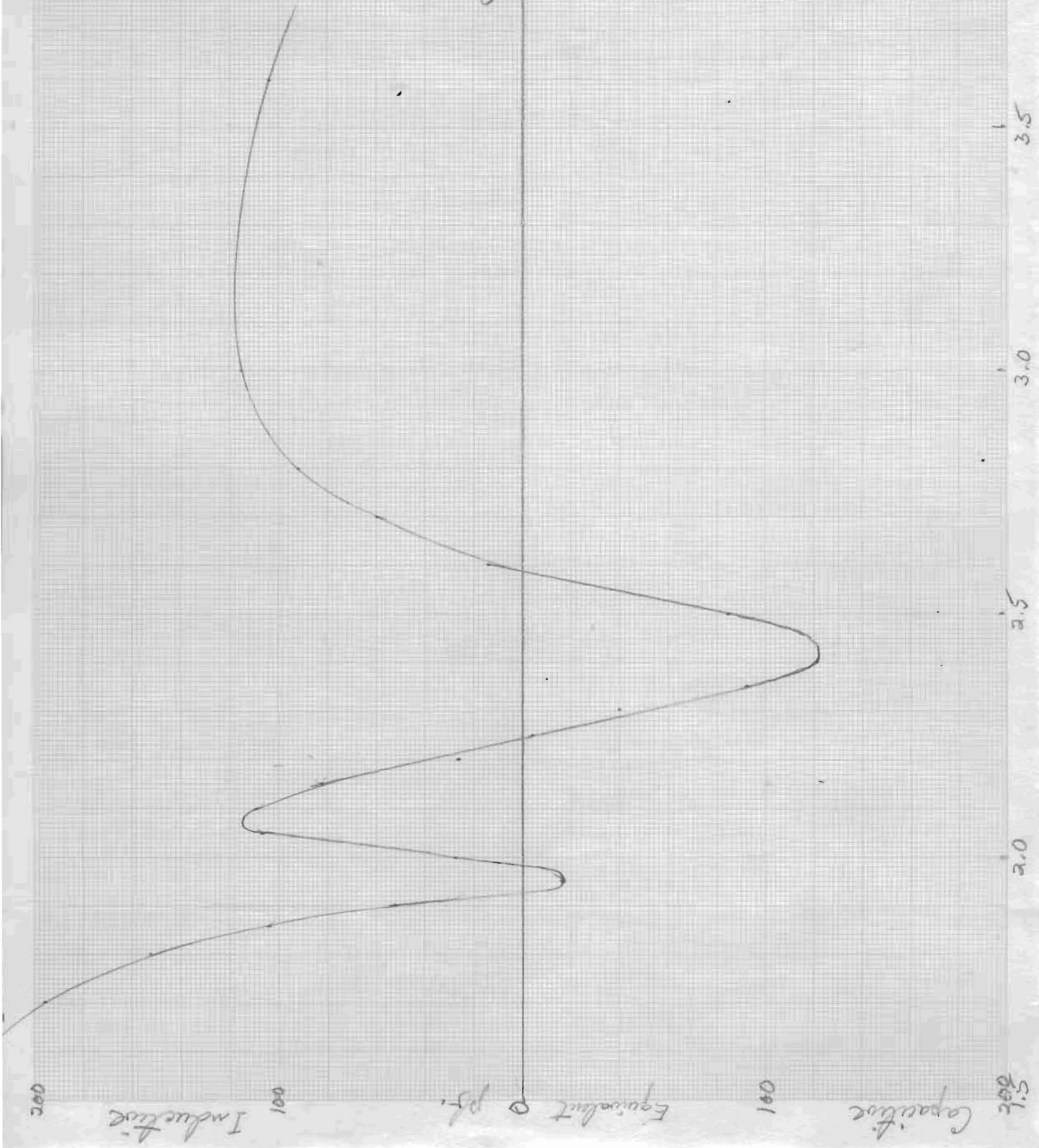
Straight stub, Bar 14 feet from end.



Output of Tuner Box on Pole H8

10/3/65

Secondary 182T, 32 tpi, 9T load, 3DB attenuator
Straight stub, Bar 14 feet from end.



Antenna Performance Characteristics

17/3/65

Pole # 8, straight stub

Obsolete

No coils in down leads.

Computed, equivalent
L of coil
61.6 uH
= 411/MC² pf

Obs.			Bar 9 ft from end.	pf	Total		
3710	2.00	.27	6	130	105	105	C 103 20
2990	2.05	.34	.0001	77	24	124	C 98 26C
2630	2.10	.38	0.001	104	54	154	C 93 61C
1670	2.15	.60	.0001	126	96	196	C 89 107C
928	2.20	1.08	.0002	94	41	241	C 85 156C
375	2.25	2.67	.0002	129	103	303	C 81 222C
179	2.30	5.58	.0001	40	3	103	C 78 25C
190	2.31	5.27	0	26	43	43	C 77 34L
220	2.32	4.54	0	63	16	16	L 76 92L
270	2.33	3.70	0	93	40	40	L 76 116L
332	2.34	3.01	0	94	41	41	L 75 116L
389	2.35	2.57	0	89	36	36	L 75 111L
445	2.36	2.25	0	79	26	26	L 74 100L
630	2.38	1.59	0	51	8	8	C 73 65L
740	2.40	1.36	0	82	29	29	C 71 42L
960	2.45	1.04	0	121	85	85	C 69 16C
960	2.58	1.04	.0001	94	41	141	C 66 75C
640	2.55	1.45	.0002	68	18	218	C 61 1315
470	2.60	2.14	.0002	120	83	283	C 61

Ben Hart
pf.

Antenna Performance Characteristics

1/13/60

Pole H8, Straight stub

MC	millimhos	uf	dial pf	Total Xohms	LozC	Return
	Shorting bar 14 feet from end of stub					
1.6	.25	0	98			C
1.8	1.48	.0001	121			
2.0	.29	0	121			
2.1 ^{2.05}	.33	.0001	87			C
2.2 ^{2.15}	.72	.0002	42			C
2.4 ^{2.3}	1.88	.0003	60 ¹¹⁸			
2.6 ^{2.5}	2.27	.0002	123			C
2.7	10.12	.0003	140			L
2.8	8.3	.0004	90			
3.0	.55	0	133			
3.2	.40	0	75			
	Shorting bar 9 feet from end of stub					
1.6	.25	0	77.5			C
1.8	1.92	.0001	108			
2.0	.28	0	130			
2.1 ^{2.05}	.39	.0001	104			
2.2 ^{2.15}	1.09	.0002	94			
2.4 ^{2.3}	1.30	0	87 ¹²⁸			
2.6 ^{2.5}	2.27	.0002	125			C
2.7	10.13	.0003	140			L
2.8	8.1	.0004	85			
3.0	.56	0	131			
3.2	.43	0	69			
	Shorting bar 4 feet from end of stub					
1.6	.25	0	98			C
1.8	2.20	0	127			
2.0	.29	0	138			
2.1 ^{2.05}	.46	.0001	117			C
2.2 ^{2.15}	1.77	.0002	122 ¹⁰⁸			C
2.4 ^{2.3}	1.03	0	102			C
2.6 ^{2.5}	2.22	.0002	124			C
2.7	10.2	.0003	138 ³¹			LozC

Obsolete

center of bridge ungrounded
20/3/65

Antenna Performance Characteristic

Pole H8, straight stub, bar 9 ft from end, 32 uh coils in down lead.

MC	millimhos	ohms	rf	dial	pf	Total pf	Loc
1.80	.62		0	128	100	100	L
1.84	.48		0	96	43	43	L
1.86	.50		0	74	22	22	L
1.88	.56		0	38	2	2	L
1.90	.72		0	82	29	29	C
1.92	.95		0	108	60	60	C
1.94	1.45		0	128	100	100	C
1.96	2.49		.0001	80	27	127	C
1.98	4.42		0	122	88	88	C
1.99	5.30		0	52	8	8	L
2.00	5.27		.0001	93	40	140	L
2.02	3.57		.0002	109	62	262	L
2.05	1.74		.0002	92	39	239	L
2.10	0.61		.0001	121	86	186	L
2.15	0.33		.0001	90	37	137	L
2.20	0.24		.0001	50	8	108	L
2.25	0.22		.0001	123	90	90	L
2.30	0.27		0	114	72	72	L
2.35	0.49		0	104	54	54	L
2.40	0.83		0	119	82	82	L
2.50	0.22		0	121	86	86	L
2.60	0.08		0	109	62	62	L
2.80	0.06		0	95	42	42	L
3.00	0.04		0	81	28	28	L

Antenna on Pole H8, 32 μ h coils in down leads 24/3/65
 5 straight stub. bar 14 feet from end.

MC	millimhos	Ohms	μ f	dial	pf	Total pf	Loc
1.5	.32		0	70	20	20	C
1.6	1.32		.0001	83	30	130	C
1.65	3.33		0	110	64	64	C
1.7	2.33		.0002	47	6	206	L
1.8	.45		0	124	92	92	L
1.85	.39		0	77	24	24	L
1.87	.43		0	52	8	8	L
1.88	.46		0	37	2	2	C
1.89	.50		0	57	12	12	C
1.90	.55		0	72	21	21	C
1.95	1.17		0	124	92	92	C
2.0	4.20		0	129	102	102	C
2.01	4.93		0	85	32	32	C
2.02	5.19		0	115	74	74	L
2.03	4.64		.0001	113	70	170	L
2.05	3.25		.0002	93	40	240	L
2.1	1.04		.0002	63	14	214	L
2.2	.28		.0001	70	20	120	L
2.25	.23		0	128	100	100	L
2.3	.28		0	118	80	80	L
2.33	.39		0	113	70	70	L
2.35	.50		0	113	70	70	C
2.38	.60		0	118	80	80	L
2.4	.54		0	122	88	88	L
2.5	.20		0	116	76	76	L
2.7	.12		0	102	52	52	L
3.0	.05		0	81	28	28	L
3.5	.12		0	85	32	32	L

Antenna on Pole H8, 32 uh coils in down leads.

24/3/65

Straight stub, bar 9 feet from end. Center Bridge grounded.

MC	millivolts	Ohms	uf	dial	pf	Total pf	LoC
1.5	.31		0	71	20	20	C
1.6	1.36		.0001	86	33	133	C
1.65	3.26		0	95	42	42	C
1.7	1.93		.0001	127	98	198	L
1.8	.45		0	117	78	78	L
1.85	.45		0	40	3	40	L
1.9	.74		0	103	53	53	C
1.95	2.11		.0001	91	38	138	C
1.97	3.65		.0001	94	41	141	C
1.98	4.84		0	123	90	90	C
1.99	5.60		0	73	21	21	L
2.00	5.42		.0001	103	53	153	L
2.05	1.77		.0002	93	40	240	L
2.1	.64		.0001	122	88	188	L
2.2	.25		0	132	108	108	L
2.3	.41		0	112	68	68	L
2.35	.71		0	116	76	76	L
2.40	.47		0	124	92	92	L
2.5	.17		0	115	74	74	L
2.33	.62		0	112	68	68	L

Antenna on Pole H8, 32 uh coils in down leads, 24/3/65
 Straight stub, Bar 4 feet from end, Center of bridge grounded

MC	millimhos	Ohms	rf	dial	pf	Total pf	Loc
1.5	.32		0	70	19	19	C
1.6	1.33		.0001	81	28	128	C
1.65	3.24		0	52	8	8	C
1.7	1.71		.0001	119	82	182	L
1.8	.43		0	101	50	50	L
1.85	.55		0	77	25	25	C
1.9	1.11		0	128	100	100	C
1.95	4.21		.0001	96	43	143	C
1.96	5.40		0	115	74	74	C
1.965	5.81		0	48	6	6	C
1.97	5.98		0	104	54	54	L
1.98	5.35		.0001	134	112	212	L
2.00	3.06		.0002	127	98	298	L
2.05	1.04		.0001	134	112	212	L
2.1	.44		.0001	108	60	160	L
2.15	.28		.0001	68	18	118	L
2.2	.25		0	124	92	92	L
2.25	.32		0	115	74	74	L
2.3	.62		0	107	58	58	L
2.33	.83		0	113	70	70	L
2.35	.84		0	120	84	84	L
2.4	.54		0	127	98	98	L
2.5	.18		0	115	74	74	L
3.0	.05		0	81	28	28	L
3.5	.08		0	79	26	26	L

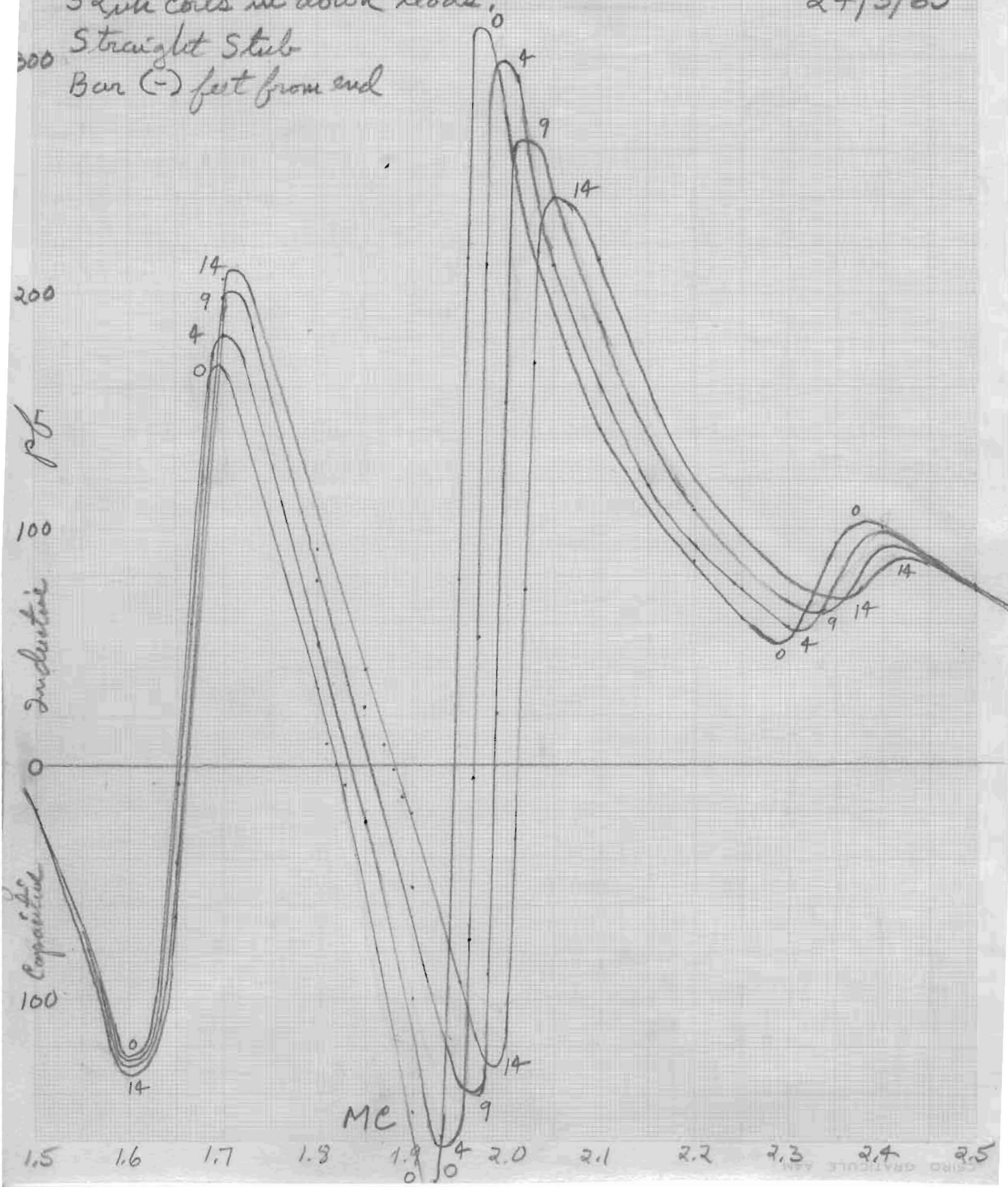
Antenna on Pole H8

32uh coils in down leads,

Straight Stub

Bar (-) feet from end

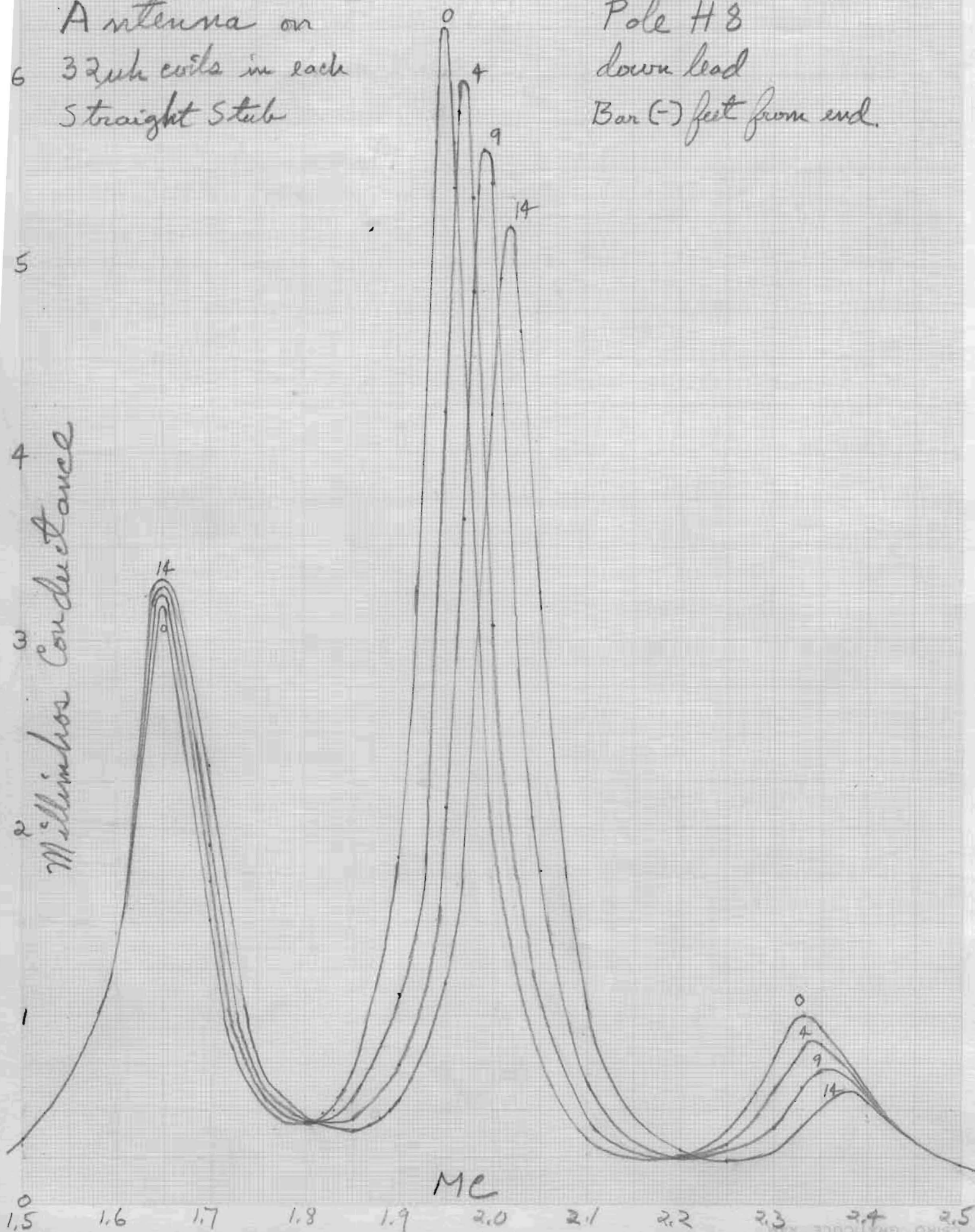
24/3/65



Antenna on
6 32uh coils in each
straight stub

Pole H 8
down lead
Bar (-) feet from end.

Millimhos Conductance

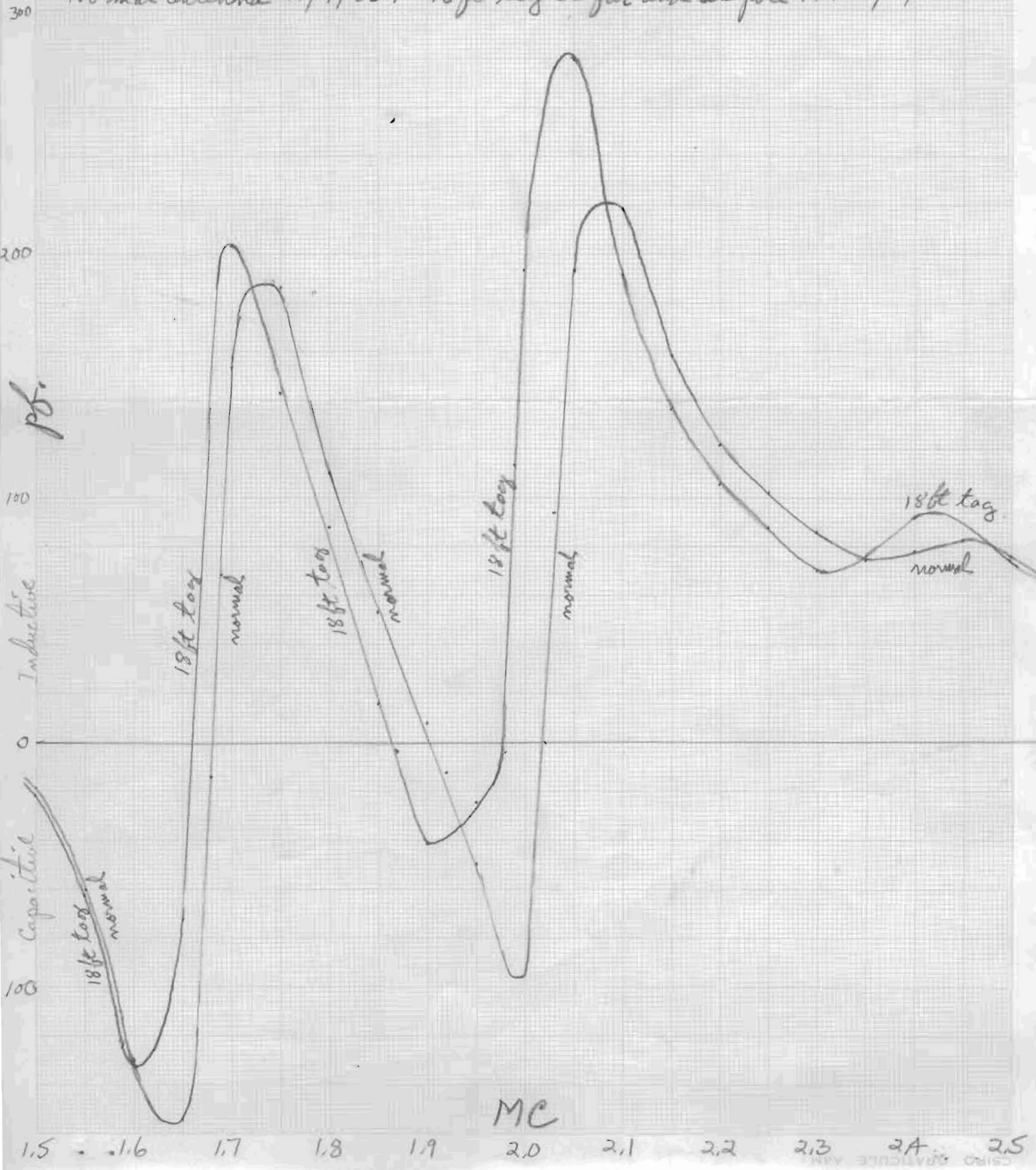


Antenna on Pole H8, 32 mile coils in down leads
 Straight stub, bar at end.

27/3/65

MC	millimhos	Ohms	uf	dial	pf	Total pf	Loc C
1.5	.32		0	70	20	26	C
1.6	1.34		.0001	79	26	126	C
1.65	3.14		0	63	15	15	C
1.7	1.51		.0001	112	68	168	L
1.8	.44		0	85	32	32	L
1.81	.45		0	52	8	8	L
1.82	.47		0	32	0	0	L
1.83	.50		0	53	9	9	C
1.84	.61		0	92	39	39	C
1.85	.70		0	115	74	74	C
1.9	1.84		.0001	100	48	148	C
1.92	3.27		.0001	118	80	180	C
1.93	4.33		.0001	107	58	158	C
1.94	5.65		0	117	78	78	C
1.95	6.25		0	117	78	78	L
1.96	5.66		.0001	135	114	214	L
2.00	1.70		.0002	115	74	274	L
2.1	.35		.0001	95	42	142	L
2.2	.26		0	121	86	86	L
2.25	.39		0	109	62	62	L
2.27	.51		0	105	56	56	L
2.28	.59		0	104	54	54	L
2.3	.78		0	104	54	54	L
2.33	.99		0	116	76	76	L
2.35	.92		0	124	92	92	L
2.4	.46		0	128	100	100	L
2.5	.18		0	116	76	76	L
3.0	.05		0	82	29	29	L
3.5	.07		0	77	25	25	L

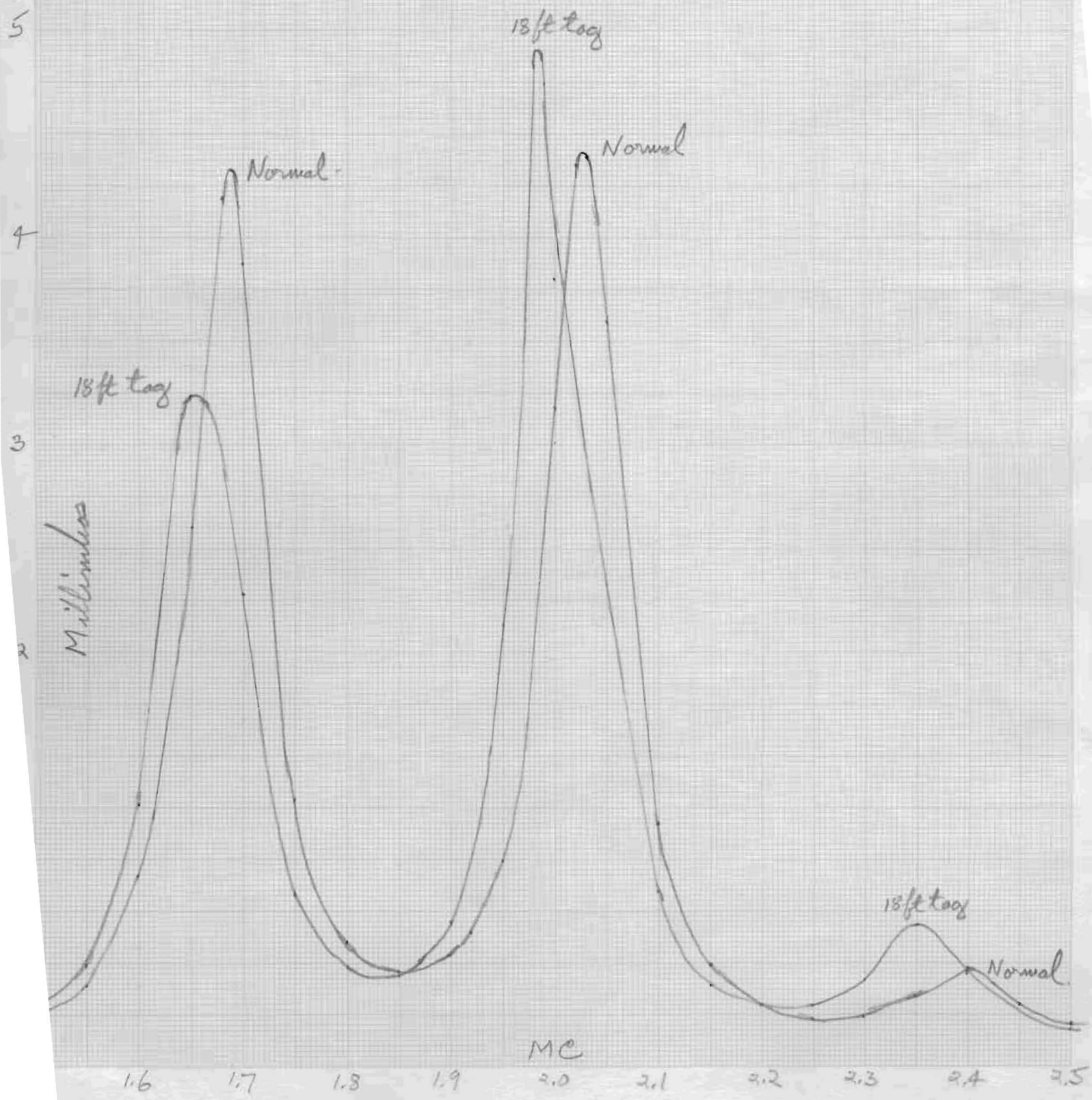
Antenna on Pole H8, 32 μ h coils in down leads
 Fanned top stub on 10 ft poles, Bar 9 feet from end.
 Normal antenna 10/4/65. 18 ft tag at far end at pole H9 3/4/65



Antenna on Pole #8, 32 μ h coils in down leads

6 Fanned top stub on 10 ft poles, Bar 9 feet from end.

Normal antenna 10/4/65. 18 ft tag at far end at pole #9 3/4/65



Antenna on Pole H8, 32uh coils in down leads.
 Fanned top stubs on 10ft posts. Bar 9ft from end.
 18ft tag lead at pole H9.

3/4/65

MC	millimeters	Ohms	uf	dial	pf	total pf	Loc
1.5	0.31		0	69	18	18	C
1.55	.49		0	109	62	62	C
1.60	1.27		.0001	85	32	132	C
1.65	3.23		0	114	72	72	C
1.70	2.28		.0001	130	104	204	L
1.75	.83		.0001	96	43	143	L
1.80	.48		0	122	88	88	L
1.85	.44		0	66	16	16	L
1.87	.50		0	40	3	3	C
1.90	.70		0	94	41	41	C
1.95	2.11		0	77	24	24	C
1.98	4.83		0	42	4	4	C
1.99	4.74		.0001	62	14	114	L
2.00	3.80		.0001	125	94	194	L
2.05	2.33		.000*	118	80	2*80	L
2.10	.85		.0001	124	92	192	L
2.15	.40		.0001	90	37	137	L
2.20	.29		.0001	47	6	106	L
2.25	.29		0	122	88	88	L
2.30	.42		0	113	70	70	L
2.35	.68		0	116	76	76	L
2.4	.46		0	124	92	92	L
2.5	.18		0	115	74	74	L
3.0	.06		0	81	28	28	L

Antenna on Pole H8, 33uh coils in down leads

10/4/65

Fanned top stub on 10ft posts, Bar 9ft from end

MC	millimeters	Ohms	uf	dial	pf	total pf	L or C
1.5	.26		0	74	22	22	C
1.55	.39		0	108	60	60	C
1.6	.93		.0001	83	30	130	C
1.65	2.61		.0001	104	54	154	C
1.68	4.19		0	64	16	16	C
1.69	4.33		0	113	70	70	L
1.7	3.90		.0001	105	56	156	L
1.75	1.28		.0001	122	88	188	L
1.8	.60		.0001	55	10	110	L
1.85	.46		0	103	53	53	L
1.90	.54		0	52	8	8	L
1.92	.65		0	57	12	12	C
1.95	.99		0	101	50	50	C
2.0	3.18		0	125	94	94	C
2.02	4.35		0	30	0	0	L
2.03	4.39		0	125	94	94	L
2.05	3.59		.0001	126	96	196	L
2.1	1.17		.0002	69	18	218	L
2.15	.49		.0001	107	58	158	L
2.2	.30		.0001	74	22	122	L
2.25	.23		0	129	102	102	L
2.3	.24		0	121	86	86	L
2.35	.34		0	115	74	74	L
2.4	.47		0	117	78	78	L
2.45	.30		0	119	82	82	L
2.5	.20		0	116	76	76	L
2.6	.11		0	107	58	58	L
2.8	.17		0	96	43	43	L
3.0	.06		0	86	33	33	L
3.5	.15		0	84	31	31	L