

Role Role Position as per L.C. by Mr. David EMI 11-9-51

Triangulation in Hawaii 1930

20° 42' 37.791" N  
156° 15' 32.388" W

Unadjusted 1950 survey

20° 43' 37.765" N latitude  
156° 15' 32.860" W longitude

Adjustment of Pua Moanua 191° 19' 58.9" from south.

Adjustment of Kole Kole #1 188° 01' 16.5" from Pua Moanua = 197° 19' 15.9" from north

Adjustment of Kole Kole #2 46° 55' 51.5" from Pua Moanua = 56° 13' 50.9" from north

Adjustment of Kole Kole #3 13° 44' 21.5" from Pua Moanua = 23° 03' 20.9" from north

A

B

C

D



156° 17'

156° 16'

29° N of W

8500

9000

3480

2580

9500

PAPAAMU RIDGE

9000

3/4 MILE

13° S of W

1 1/4 MILES

9000

1680

8500

NOTE:

KOLEKOLE BENCH MARK AT

156° 15' 29.5" X W

20° 42' 30.7" X N

} see over for correct values.

A

B

C

D

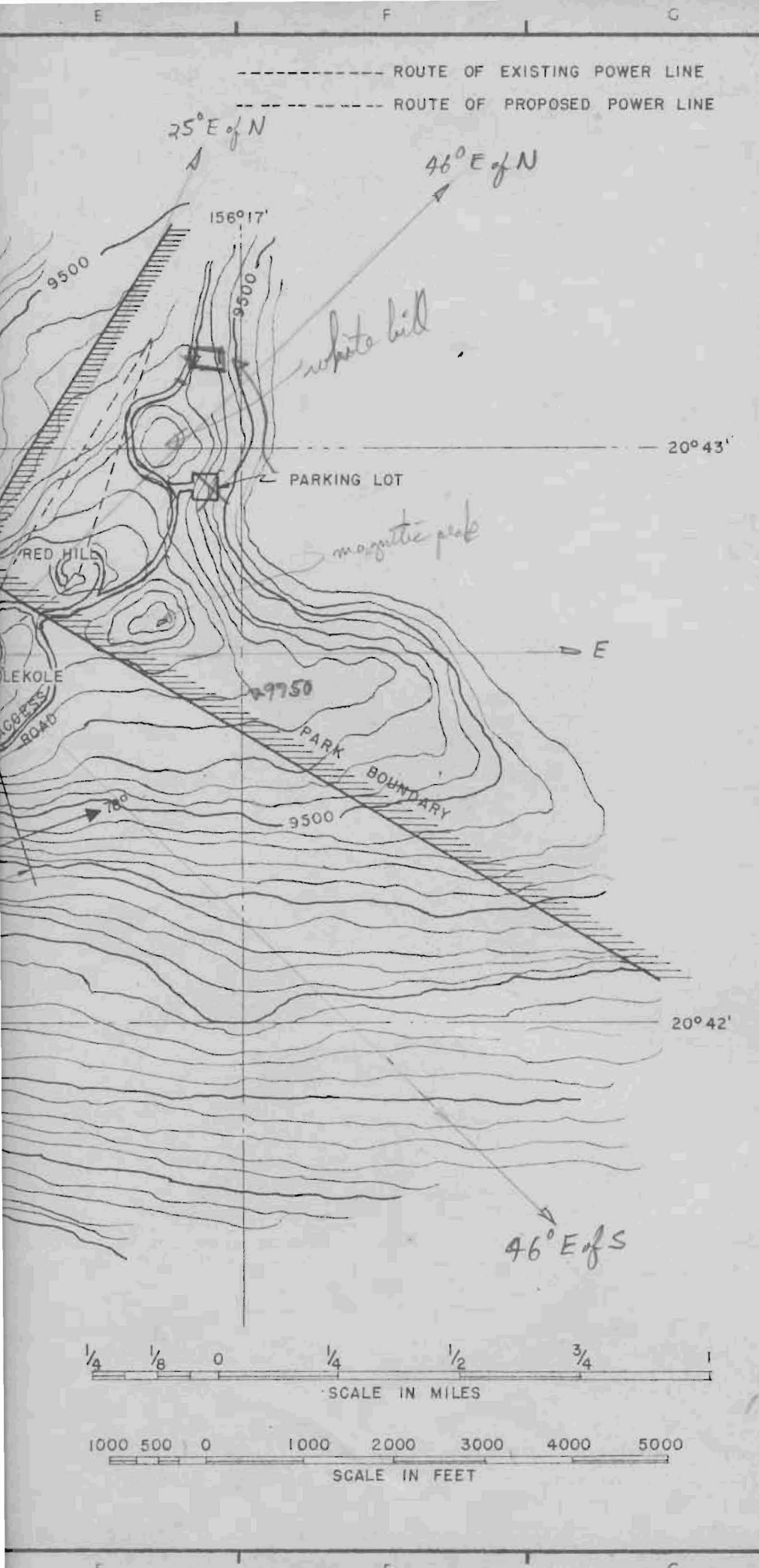
1

2

3

4

5



RADIOCOMMUNICATIONS



MUTUAL TELEPHONE COMPANY  
HONOLULU, HAWAII

TITLE

KOLEKOLE  
PEAK AREA

PROJECT IDENTIFICATION

PROJECT NUMBER 117  
 PROV. EST. NUMBER  
 JOB NUMBER 36-46  
 ORIGINALLY FOR

TOLERANCES		RAW	PLATED
FRACTIONAL	DIM.	±.010	±.012
DECIMAL	DIM.	±.005	±.007
HOLE	DIAM. DIM.	±.003	±.005

UNLESS OTHERWISE SPECIFIED

MATERIAL

FINISH

DRAWING DATA

DRAWN BY LUM DATE 5-15-50  
 CHECKED BY [Signature] DATE 5-16-50  
 APPROVED BY [Signature] DATE  
 SCALE 1:15,824

REVISIONS

2. REDRAWN. 5-15-'50

DRAWING NO. ISSUE DATE

B 192

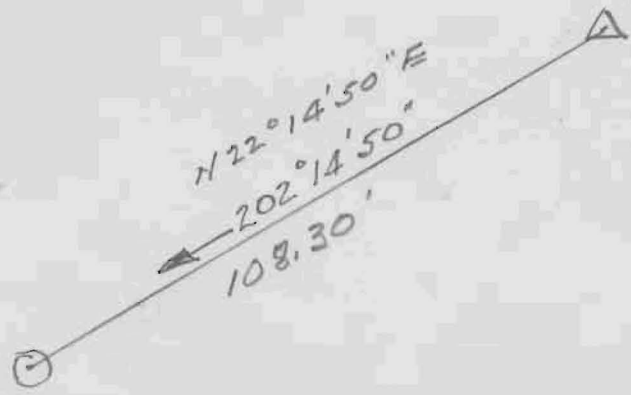
3

Oct.  
19  
1949

KOLEKOLE Marker

Lat  $20^{\circ}42'37.791''$   
Long  $156^{\circ}15'32.368''$

Elev 3051.6 M  
10012 Ft.



center of  
turntable