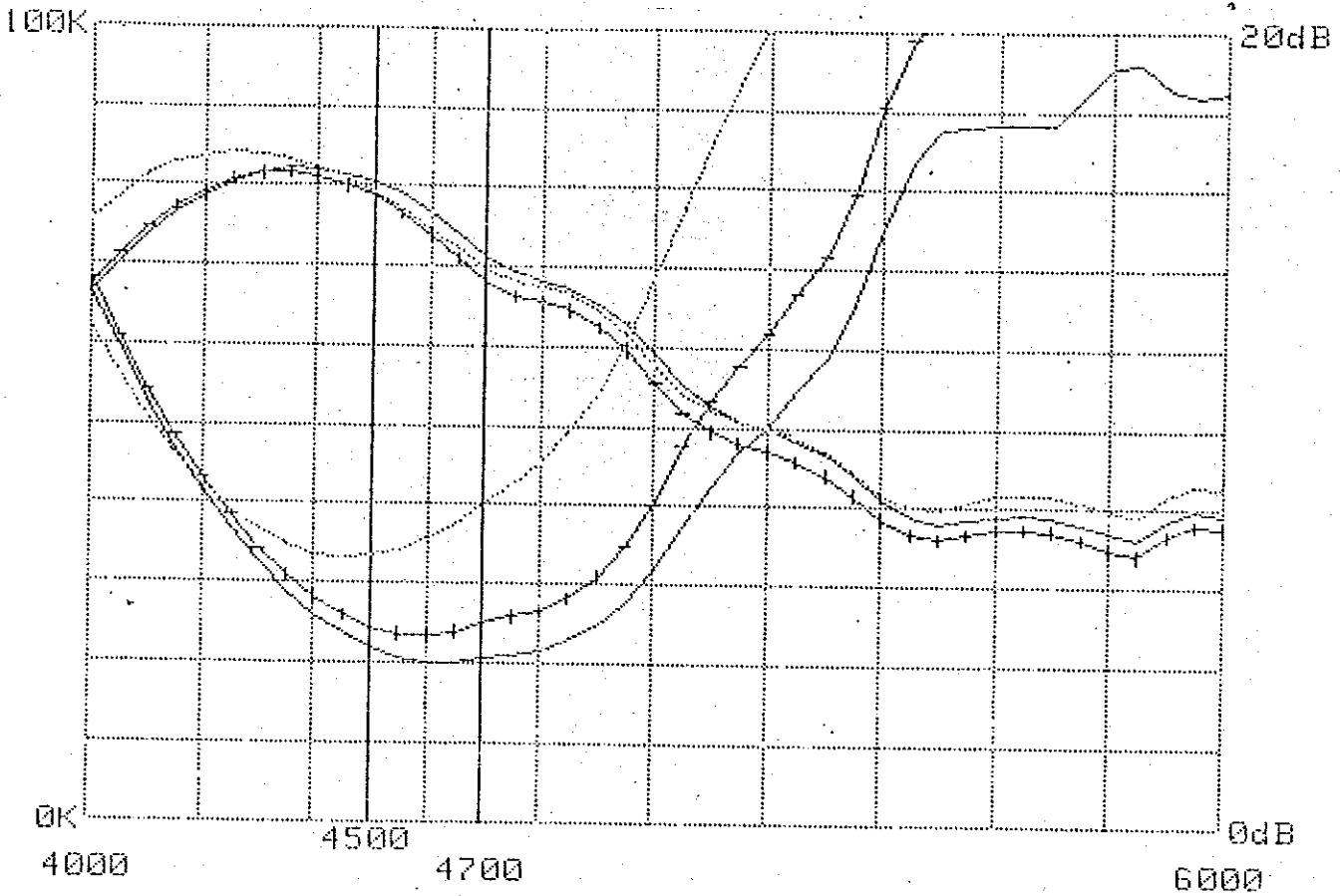


--- Flow= 20 AT 4650, Tav= 20.6
 --- Flow= 24 AT 4600, Tav= 24.1
 --- Flow= 33 AT 4450, Tav= 36.3

V_D V_D V_G
 #7 15K 4.8, 10, -1.383, 61, 105
 3, 10, -1.293
 3, 30, -1.915

V_D SUPPLY SV IS BEST



AMPLIFIER GAIN AND NOISE TEMPERATURE VS FREQUENCY 1/29/80

RUN	Toff	Ton	Tav	Tlow	Flow	Glow	Ghigh
0	19.5	111.6	20.6	19.9	4650	14.3	16.1
1	19.5	111.6	24.1	23.5	4600	13.6	15.7
2	19.5	111.6	36.3	33.2	4450	13.9	15.9

FOR NEAR 2 STAGE
 GASFET AMPLIFIER
 CONTAINED IN THIS
 ENVELOPE